

KENT, OHIO

AL-5397 (FAA)

19283

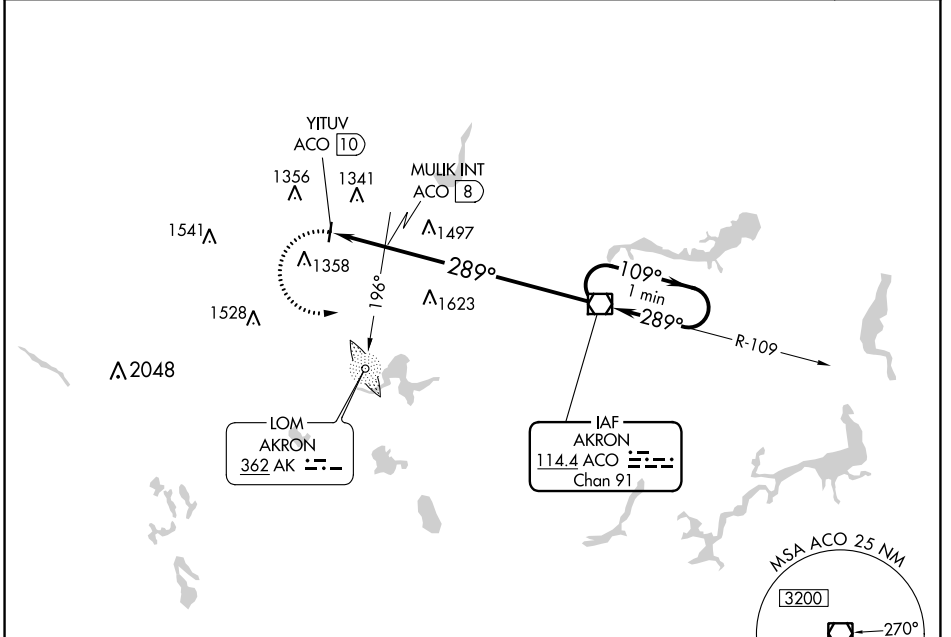
VOR/DME ACO 114.4 Chan 91	APP CRS 289°	Rwy Idg TDZE Apt Elev	N/A N/A 1134
---	------------------------	-----------------------------	---

VOR-A

KENT STATE UNIVERSITY (1G3)

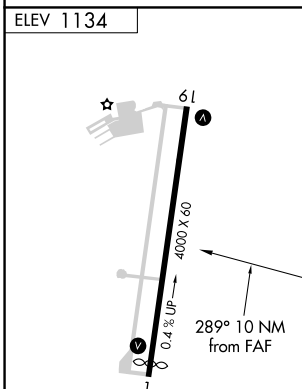
▽ Use Akron Fulton altimeter setting; when not received, ▲ NA use Akron-Canton Rgnl altimeter setting.	MISSED APPROACH: Climbing left turn to 3000 direct ACO VOR/DME and hold.
---	--

AWOS-2 119.15	AKR ASOS 126.825	CLEVELAND APP CON * 118.6 371.875	CLNC DEL 125.65	UNICOM 122.725 (CTAF)	122.9 0
-------------------------	----------------------------	---	---------------------------	---------------------------------	----------------



EC-2, 21 APR 2022 to 19 MAY 2022

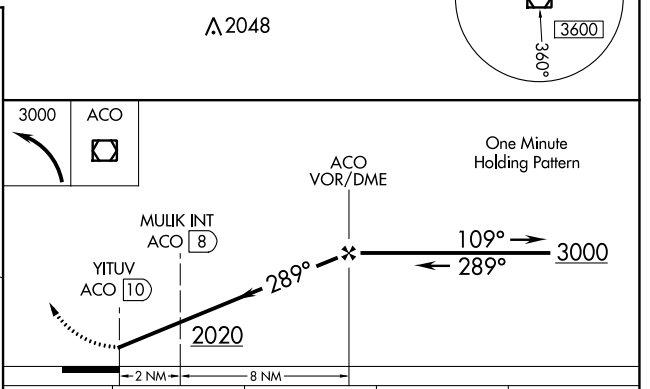
EC-2, 21 APR 2022 to 19 MAY 2022



ELEV 1134

MIRL Rwy 1-19 (1) REL Rwys 1 and 19 (1)

FAF to MAP 10 NM					
Knots	60	90	120	150	180
Min:Sec	10:00	6:40	5:00	4:00	3:20



CATEGORY	A	B	C	D
CIRCLING	2020-1¼	886 (900-1¼)	2020-2¾ 886 (900-2¾)	NA
MULIK FIX MINIMUMS (ADF OR DME REQUIRED)				
CIRCLING	1760-1	626 (700-1)	1760-1¾ 626 (700-1¾)	NA

KENT, OHIO
Amdt 14 09FEB12

41°09'N-81°25'W

KENT STATE UNIVERSITY (1G3)

VOR-A