

| | | | |
|--|------------------------|-----------------------------|---|
| WAAS CH 97531 W19B | APP CRS 194° | Rwy Idg TDZE Apt Elev | 3700 733 733 |
|--|------------------------|-----------------------------|---|

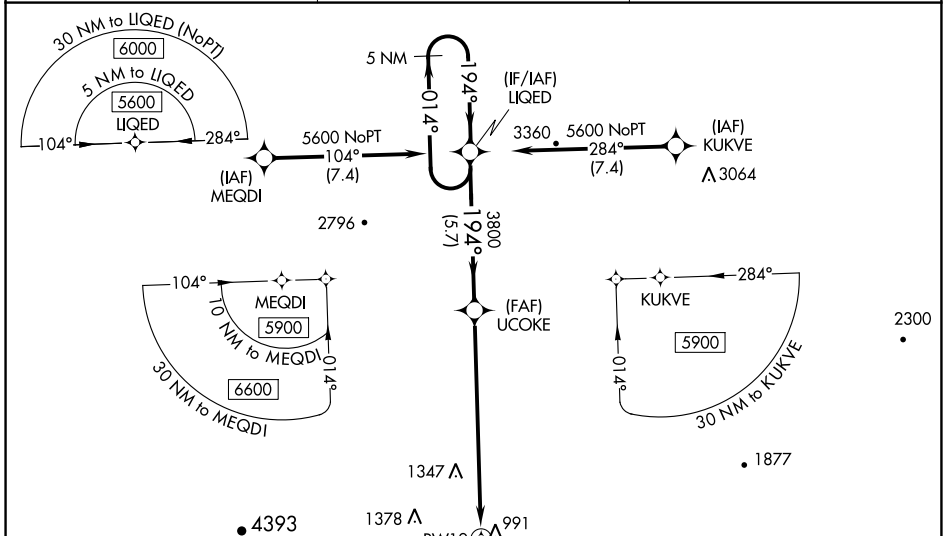
RNAV (GPS) Z RWY 19

MORRISVILLE-STOWE STATE (MVL)

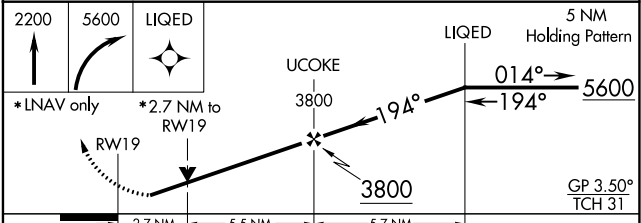
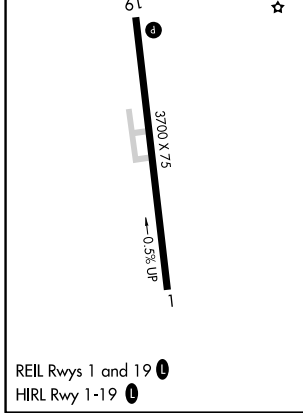
⚠ For uncompensated Baro-VNAV systems, LNAV/VNAV NA below -28°C (-18°F) or above 54°C (130°F). Circling NA for Cat C E of Rwy 1-19. Baro-VNAV and VDP NA when using Burlington altimeter setting. Rwy 19 helicopter visibility reduction below 3/4 SM NA. DME/DME RNP-0.3 NA. When local altimeter setting not received, use Burlington altimeter setting: increase LPV DA to 1380 feet and all visibilities 3/4 SM; increase LNAV/VNAV DA to 1690 feet; increase all MDAs 120 feet.

⚠ MISSED APPROACH: (Do not exceed 165K until LIQED) Climb to 2200 then climbing right turn to 5600 direct LIQED and hold, continue climb-in-hold to 5600. Missed approach requires minimum climb of 325 feet per NM to 3000; if unable to meet climb gradient, see RNAV (GPS) Y Rwy 19.

| | | |
|------------------------|-------------------------------------|---------------------------------|
| ASOS 135.625 | BOSTON CENTER 135.7 282.2 | UNICOM 122.8 (CTAF) 0 |
|------------------------|-------------------------------------|---------------------------------|



| | |
|----------|----------|
| ELEV 733 | TDZE 733 |
|----------|----------|



| CATEGORY | A | B | C | D |
|-------------------|---------------------------|---------------------------|-------------------------|----|
| LPV DA | 1270-1½ 537 (600-1½) | | | NA |
| LNAV/VNAV DA | 1580-3 847 (900-3) | | | NA |
| LNAV MDA | 1760-1¼ 1027 (1100-1¼) | 1760-1½ 1027 (1100-1½) | 1760-3 1027 (1100-3) | NA |
| C CIRCLING | 1760-1¼ 1027 (1100-1¼) | 1780-1½ 1047 (1100-1½) | 1980-3 1247 (1300-3) | NA |

NE-1, 21 APR 2022 to 19 MAY 2022

NE-1, 21 APR 2022 to 19 MAY 2022