

| | | | |
|--|------------------------|---|-------------|
| VORTAC FOD 113.5 Chan 82 | APP CRS 112° | Rwy Idg TDZE 1117 Apt Elev 1122 | 3851 |
|--|------------------------|---|-------------|

VOR/DME RWY 14

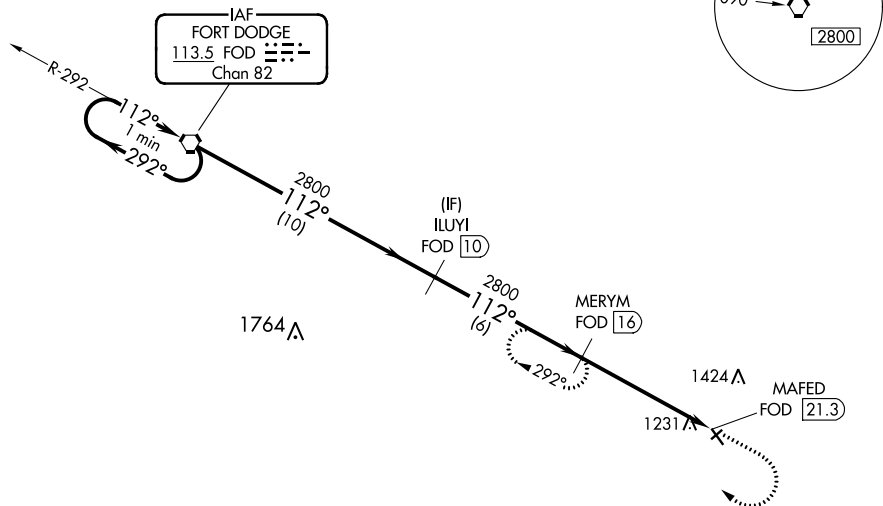
WEBSTER CITY MUNI (EBS)

⚠ When local altimeter setting not received, use Clarion altimeter setting and increase all MDA 60 feet.
⚠ Helicopter visibility reduction below 3/4 SM not authorized.

MISSED APPROACH: Climb to 2800 then right turn on FOD VORTAC R-112 to MERYM/16 DME and hold.

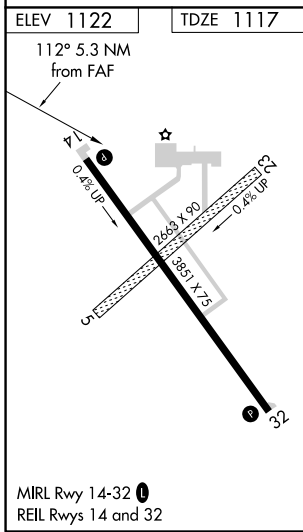
| | | |
|--------------------------|--|---------------------------------|
| AWOS-3 127.825 | MINNEAPOLIS CENTER 134.0 288.3 | UNICOM 122.8 (CTAF) 0 |
|--------------------------|--|---------------------------------|

NoPT for arrival on FOD VORTAC
 airway radials 215 CW 048.



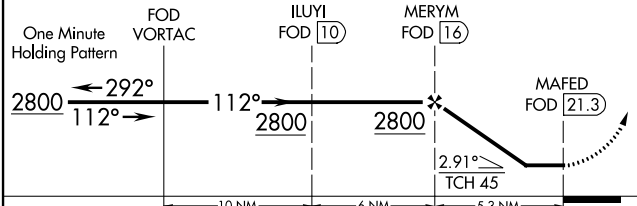
NC-3, 21 APR 2022 to 19 MAY 2022

NC-3, 21 APR 2022 to 19 MAY 2022



VGSI and descent angles not coincident (VGSI Angle 3.25/TCH 25).

| | | |
|------|-----------|--------------|
| 2800 | FOD R-112 | MERYM FOD 16 |
|------|-----------|--------------|



| CATEGORY | A | B | C | D |
|-------------------|--------|-------------|---|----|
| S-14 | 1680-1 | 563 (600-1) | | NA |
| C CIRCLING | 1680-1 | 558 (600-1) | | NA |