

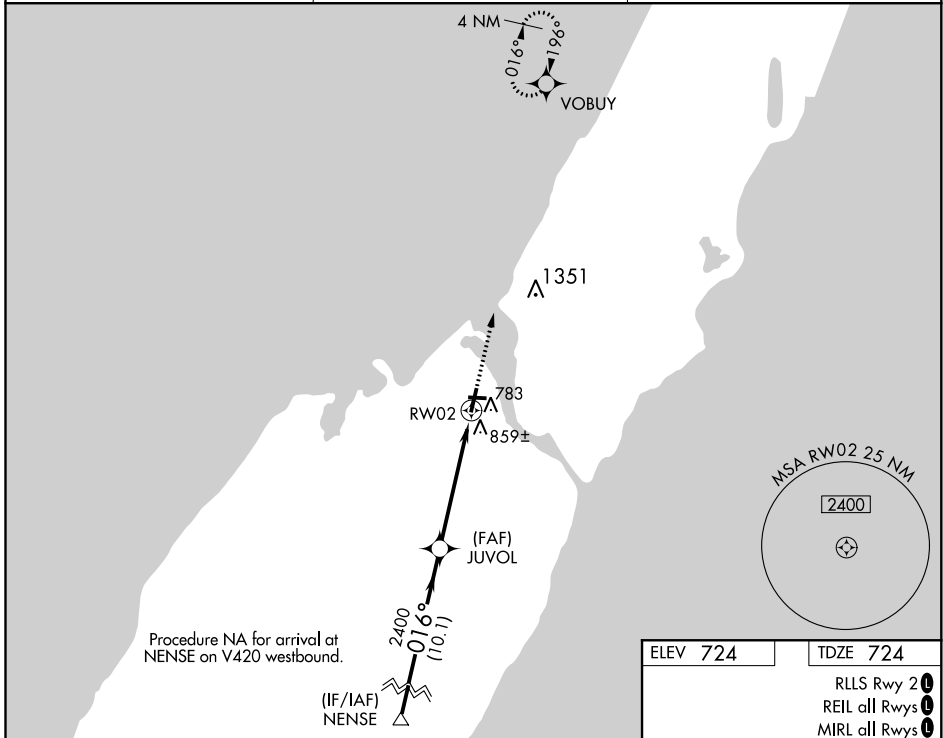
WAAS CH <b>81904</b> <b>W02A</b>	APP CRS <b>016°</b>	Rwy Idg <b>4599</b> TDZE <b>724</b> Apt Elev <b>724</b>
--	------------------------	---

# RNAV (GPS) RWY 2

DOOR COUNTY CHERRYLAND (SUE)

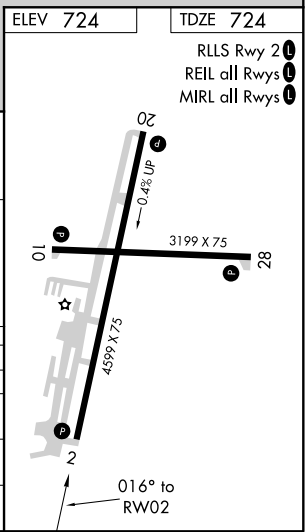
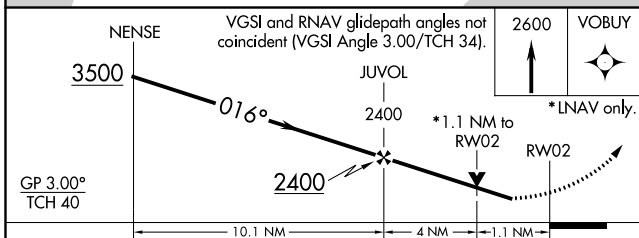
RNP APCH.	<p>▼ Rwy 2 helicopter visibility reduction below 3/4 SM NA. For uncompensated Baro-VNAV systems, LNAV/VNAV NA below -16°C or above 54°C.</p> <p>▲ MISSED APPROACH: Climb to 2600 direct VOBUY and hold.</p>
-----------	---

AWOS-3PT <b>128.325</b>	GREEN BAY APP CON * <b>119.25 338.2</b>	UNICOM <b>122.7(CTAF) 0</b>
----------------------------	--	--------------------------------



EC-3, 21 APR 2022 to 19 MAY 2022

EC-3, 21 APR 2022 to 19 MAY 2022



CATEGORY	A		B		C		D	
LPV DA	1013-1		289 (300-1)					
LNAV/VNAV DA	1164-1½		440 (500-1½)					
LNAV MDA	1120-1	396 (400-1)	1120-1⅛	396 (400-1⅛)				
CIRCLING	1280-1	556 (600-1)	1280-1½	556 (600-1½)	1340-2	616 (700-2)		