

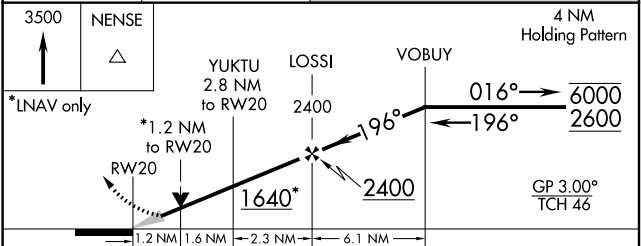
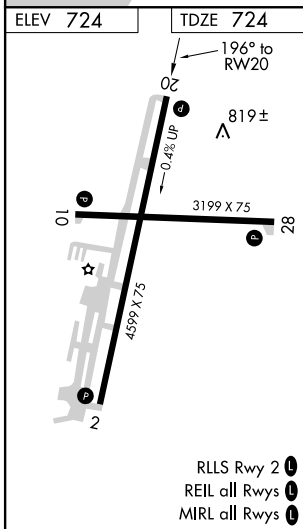
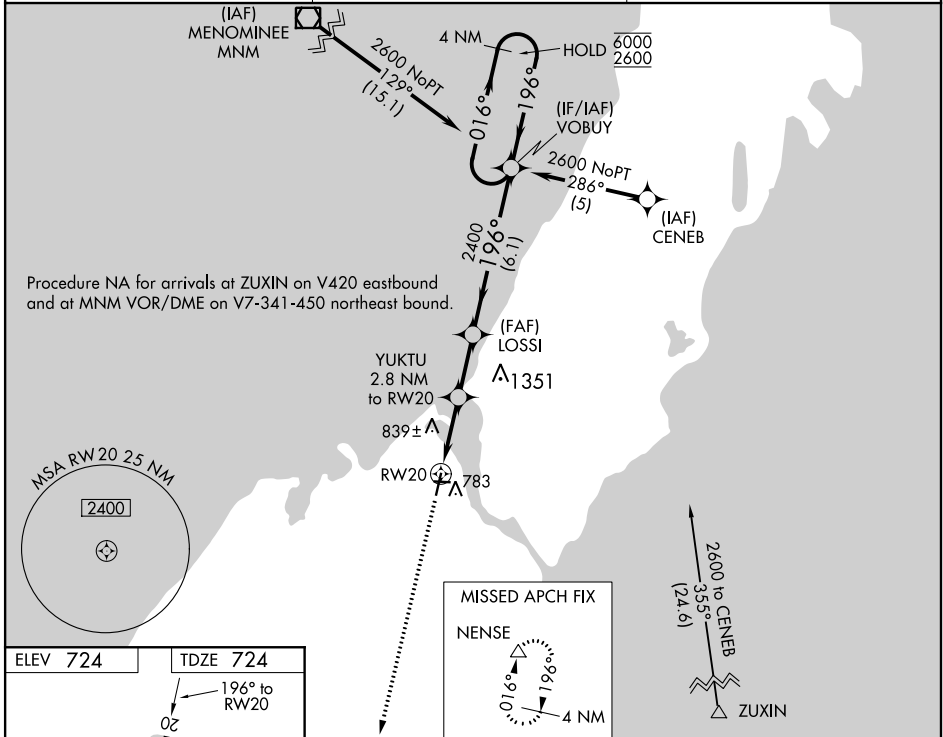
WAAS CH 86304 W20A	APP CRS 196°	Rwy Idg TDZE 724 Apt Elev 724	4599
----------------------------------------	------------------------	---------------------------------------------------	-------------

RNAV (GPS) RWY 20

DOOR COUNTY CHERRYLAND (SUE)

RNP APCH.	MISSED APPROACH: Climb to 3500 direct NENSE and hold.
<p>For uncompensated Baro-VNAV systems, LNAV/VNAV NA below -16°C or above 54°C.</p>	

AWOS-3PT 128.325	GREEN BAY APP CON ★ 119.25 338.2	UNICOM 122.7 (CTAF) 0
----------------------------	--------------------------------------------	----------------------------------------



CATEGORY	A	B	C	D
LPV DA		974-7/8	250 (300-7/8)	
LNAV/VNAV DA		1069-1¼	345 (400-1¼)	
LNAV MDA	1120-1	396 (400-1)	1120-1½	396 (400-1½)
CIRCLING	1280-1	556 (600-1)	1280-1½	1340-2 616 (700-2)

EC-3, 21 APR 2022 to 19 MAY 2022

EC-3, 21 APR 2022 to 19 MAY 2022