

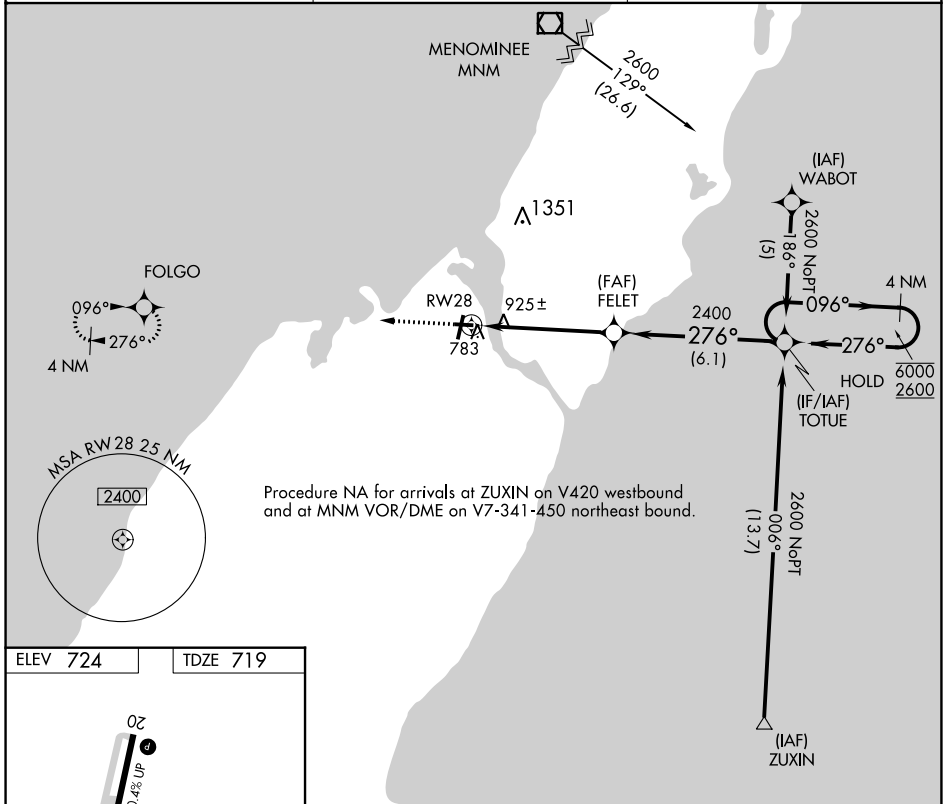
APP CRS	Rwy Idg	<b>3199</b>
<b>276°</b>	TDZE	<b>719</b>
	Apt Elev	<b>724</b>

# RNAV (GPS) RWY 28

DOOR COUNTY CHERRYLAND (SUE)

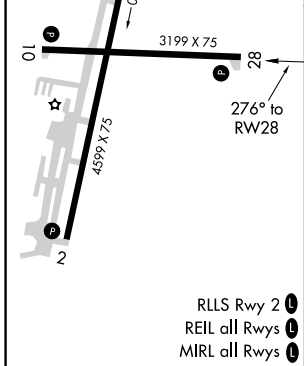
RNP APCH.	MISSED APPROACH: Climb to 2600 direct FOLGO and hold.
Rwy 28 helicopter visibility reduction below 3/4 SM NA. 	

AWOS-3 <b>128.325</b>	GREEN BAY APP CON ★ <b>119.25 338.2</b>	UNICOM <b>122.7 (CTAF)</b>
--------------------------	--	-------------------------------



EC-3, 21 APR 2022 to 19 MAY 2022

EC-3, 21 APR 2022 to 19 MAY 2022



2600	FOLGO	Visual Segment - Obstacles.	4 NM Holding Pattern	
		FELET	TOTUE	
		1.5 NM to RWY 28	096° → 6000	
		2400	← 276° 2600	
		1.5	3.6 NM	
		6.1 NM		
CATEGORY	A	B	C	D
LNAV MDA	1240-1	521 (600-1)	1240-1½ 521 (600-1½)	NA
CIRCLING	1280-1	556 (600-1)	1280-1½ 556 (600-1½)	NA