

LOC I-SGO	APP CRS	Rwy Idg	5008
109.7	060°	TDZE	142
		Apt Elev	144

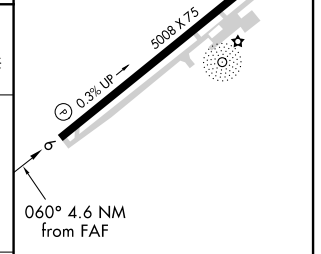
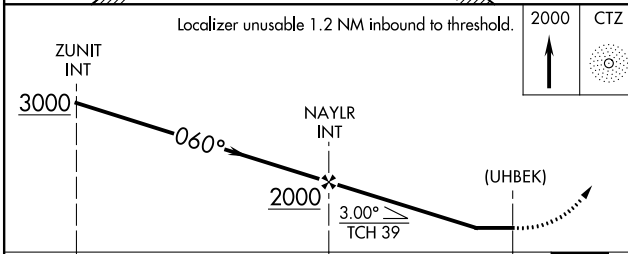
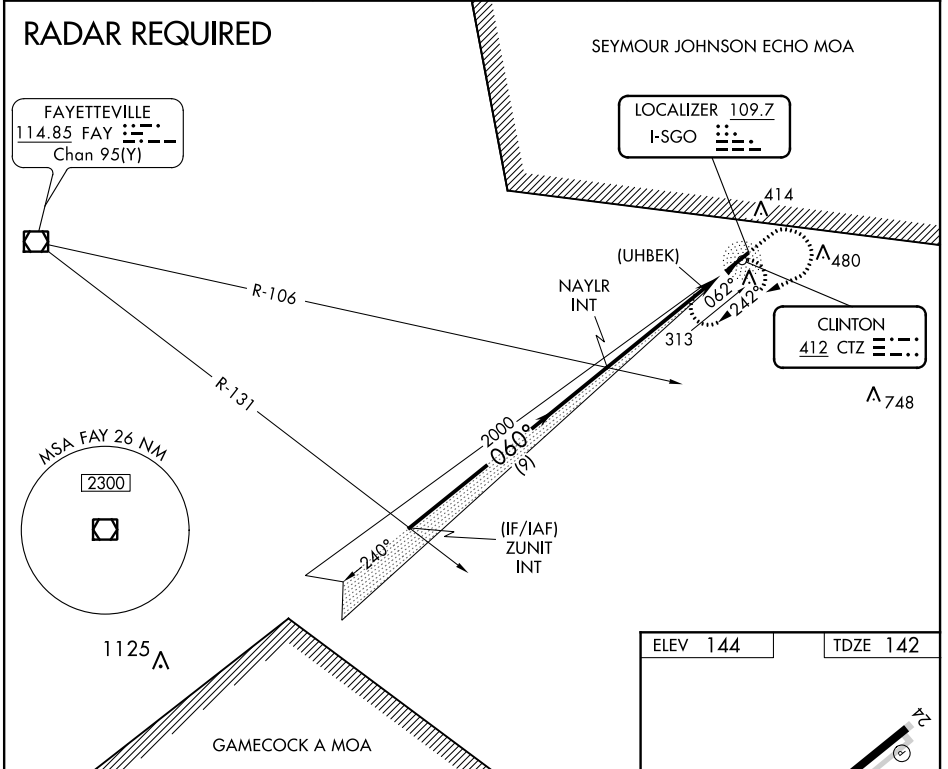
LOC RWY 6

CLINTON-SAMPSON COUNTY (CTZ)

⚠ When local altimeter setting not received, use Kenansville altimeter setting and increase all MDA 60 feet, increase S-6 Cats C/D visibility 1/8 mile and increase Circling Cats C/D visibility 1/4 mile. Rwy 24 helicopter visibility reduction below 1 SM NA. Circling Rwy 24 NA at night.

MISSED APPROACH: Climb to 2000 direct CTZ NDB and hold, continue to climb-in-hold to 2000 (ADF required).

AWOS-3 119.125	FAYETTEVILLE APP CON 133.0 290.25	UNICOM 122.8 (CTAF) 0
--------------------------	---	---------------------------------



CATEGORY	A	B	C	D
S-6	620-1½ 478 (500-1½)			
CIRCLING	680-1½ 536 (600-1½)	780-1½ 636 (700-1½)	840-2 696 (700-2)	840-2¼ 696 (700-2¼)

FAF to MAP 4.6 NM					
Knots	60	90	120	150	180
Min:Sec	4:36	3:04	2:18	1:50	1:32

SE-2, 21 APR 2022 to 19 MAY 2022

SE-2, 21 APR 2022 to 19 MAY 2022