

WAAS CH 53720 W06A	APP CRS 060°	Rwy Idg 5008 TDZE 142 Apt Elev 144
--	------------------------	---

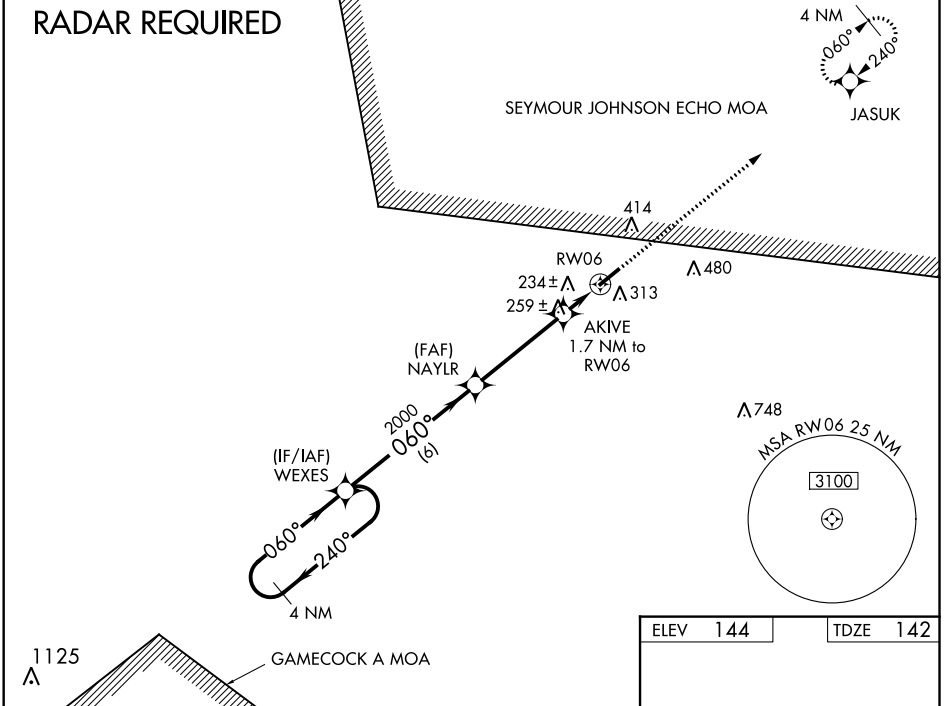
RNAV (GPS) RWY 6
CLINTON-SAMPSON COUNTY (CTZ)

RNP APCH.
 ▼ Baro-VNAV NA when using Kenansville altimeter setting. For uncompensated Baro-VNAV systems, LNAV/VNAV NA below -15°C (5°F) or above 43°C (109°F). VDP NA with Kenansville altimeter setting.
 ▲ When local altimeter setting not received, use Kenansville altimeter setting and increase LPV DA to 387 feet; increase LNAV/VNAV DA to 590 feet and all visibilities ½ SM; increase all MDAs 60 feet and visibility Cats C and D ¼ SM. Rwy 24 helicopter visibility reduction below 1 SM NA. Circling Rwy 24 NA at night.

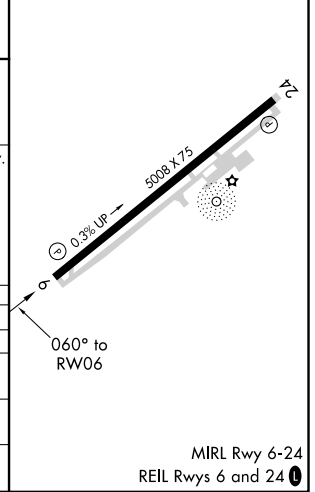
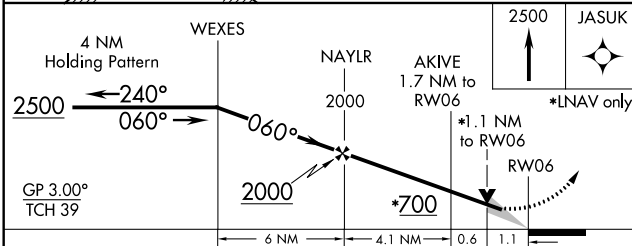
MISSED APPROACH: Climb to 2500 direct JASUK and hold.

AWOS-3 119.125	FAYETTEVILLE APP CON 133.0 290.25	UNICOM 122.8 (CTAF) 0
--------------------------	---	---------------------------------

RADAR REQUIRED



ELEV 144	TDZE 142
----------	----------



CATEGORY	A	B	C	D
LPV DA		342-¾	200 (200-¾)	
LNAV/ VNAV DA		545-1⅞	403 (500-1⅞)	
LNAV MDA	520-1	378 (400-1)	520-1⅞	378 (400-1⅞)
CIRCLING	680-1 536 (600-1)	780-1 636 (700-1)	840-2 696 (700-2)	840-2¼ 696 (700-2¼)

SE-2, 21 APR 2022 to 19 MAY 2022

SE-2, 21 APR 2022 to 19 MAY 2022