

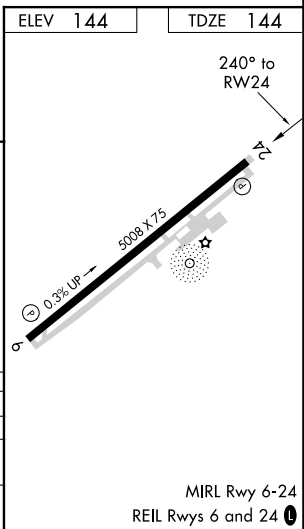
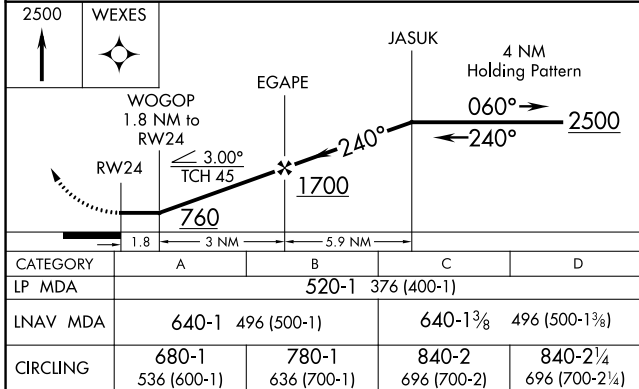
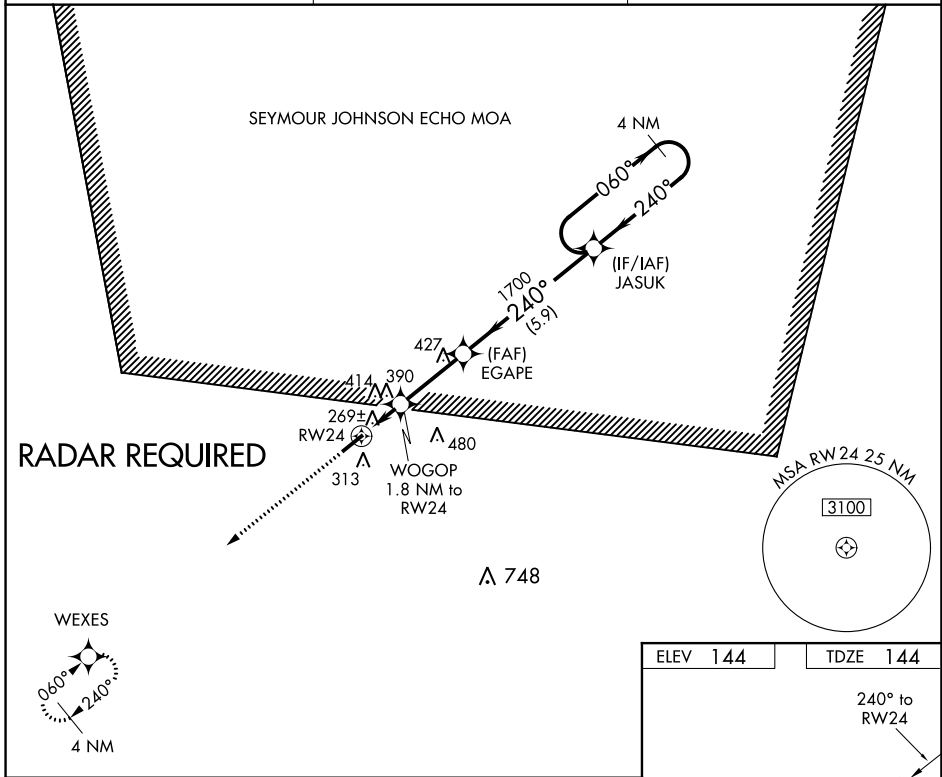
WAAS CH <b>99321</b> <b>W24B</b>	APP CRS <b>240°</b>	Rwy Idg TDZE <b>144</b> Apt Elev <b>144</b>	<b>5002</b>
--	------------------------	---	-------------

# RNAV (GPS) Y RWY 24

CLINTON-SAMPSON COUNTY (CTZ)

RNP APCH.	<p><b>▼</b> Rwy 24 helicopter visibility reduction below 1 SM NA. Straight-in Rwy 24 NA at night, Circling Rwy 24 NA at night. When local altimeter setting not received, use Kenansville altimeter setting and increase all MDAs 60 feet and visibility Cats C and D ¼ SM.</p>	MISSED APPROACH: Climb to 2500 direct WEXES and hold.
-----------	---	---

AWOS-3 <b>119.125</b>	FAYETTEVILLE APP CON <b>133.0 290.25</b>	UNICOM <b>122.8 (CTAF) 0</b>
--------------------------	---	---------------------------------



CATEGORY	A	B	C	D
LP MDA	520-1		376 (400-1)	
RNAV MDA	640-1	496 (500-1)	640-1 3/8	496 (500-1 3/8)
CIRCLING	680-1 536 (600-1)	780-1 636 (700-1)	840-2 696 (700-2)	840-2 1/4 696 (700-2 1/4)

SE-2, 21 APR 2022 to 19 MAY 2022

SE-2, 21 APR 2022 to 19 MAY 2022