

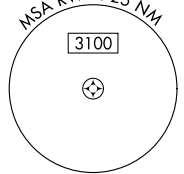
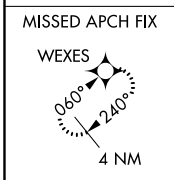
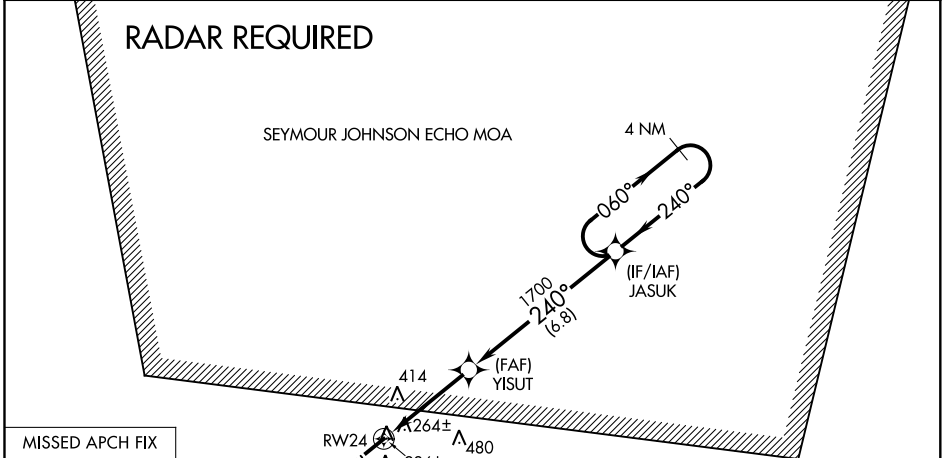
WAAS CH 82620 W24A	APP CRS 240°	Rwy Idg TDZE Apt Elev	5008 144 144
--	------------------------	-----------------------------	---

RNAV (GPS) Z RWY 24
CLINTON-SAMPSON COUNTY (CTZ)

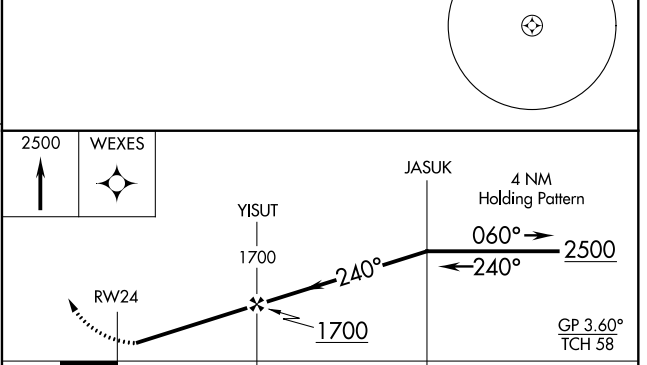
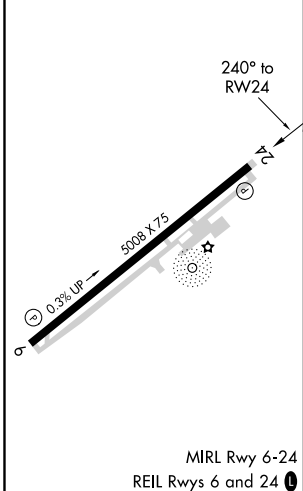
⚠ Baro-VNAV NA when using Kenansville altimeter setting. For uncompensated Baro-VNAV systems, LNAV/VNAV NA below -15°C (5°F) or above 46°C (116°F). DME/DME RNP-0.3 NA. When local altimeter setting not received, use Kenansville altimeter setting and increase all DA 45 feet, increase LNAV/VNAV Cats A/B/C visibility ½ mile. Rwy 24 helicopter visibility reduction below 1 SM NA. Straight-in Rwy 24 NA at night, Circling Rwy 24 NA at night.

MISSED APPROACH:
Climb to 2500 direct WEXES and hold.

AWOS-3 119.125	FAYETTEVILLE APP CON 133.0 290.25	UNICOM 122.8 (CTAF) 0
--------------------------	---	---------------------------------



ELEV 144	TDZE 144
----------	----------



CATEGORY	A	B	C	D
LPV DA	466-1	322 (400-1)		NA
LNAV/VNAV DA	566-1¼	422 (500-1¼)		NA

SE-2, 21 APR 2022 to 19 MAY 2022

SE-2, 21 APR 2022 to 19 MAY 2022