

VOR/DME	FAY	APP CRS	Rwy Idg	N/A
<b>114.85</b>		<b>095°</b>	TDZE	N/A
Chan <b>95(Y)</b>			Apt Elev	<b>144</b>

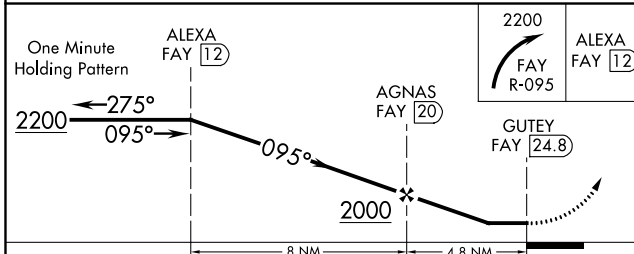
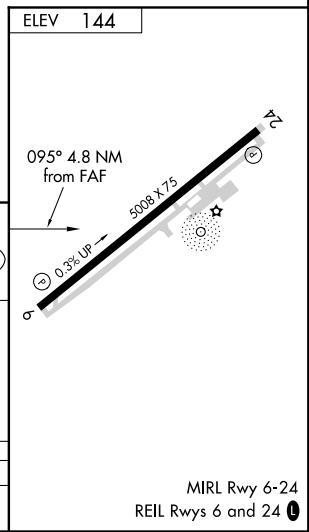
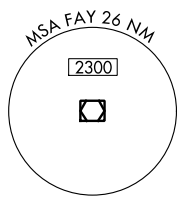
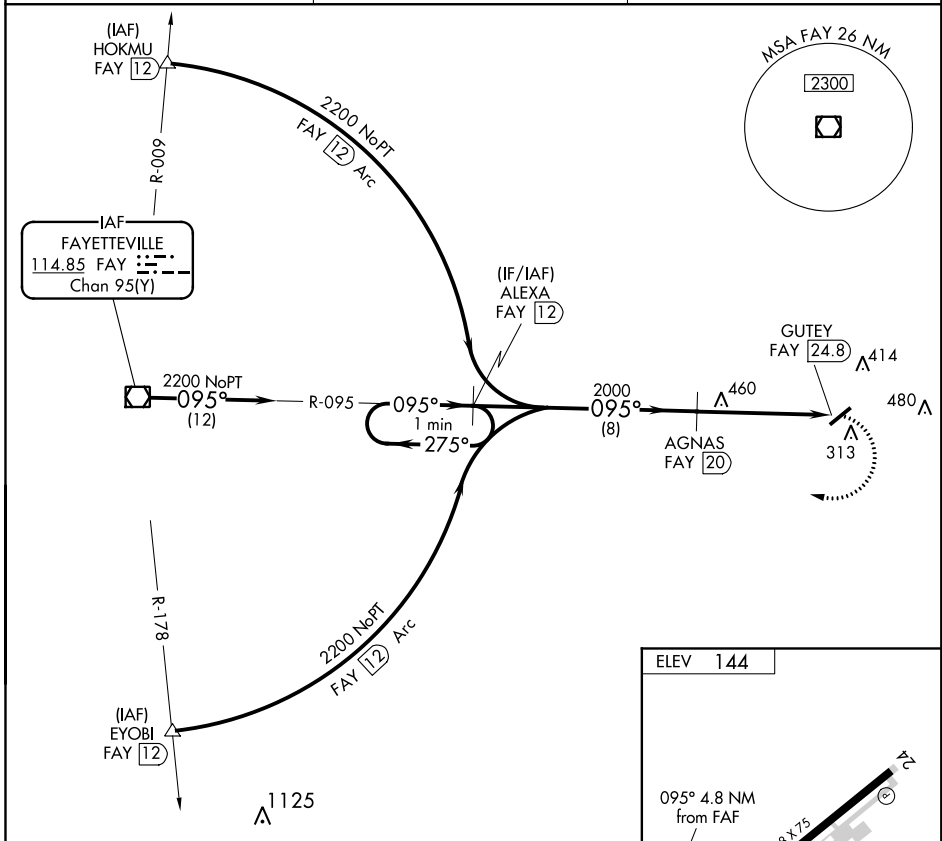
# VOR/DME-A

CLINTON-SAMPSON COUNTY (CTZ)

⚠ When local altimeter setting not received, use Kenansville altimeter setting and increase all MDA 60 feet, and increase Circling Cats C/D visibility ¼ mile.  
 ⚠ Circling to Rwy 24 NA at night. Rwy 6, 24 helicopter visibility reduction below 1 SM NA.

MISSED APPROACH: Climbing right turn to 2200 on FAY VOR/DME R-095 to ALEXA/FAY 12 DME and hold.

AWOS-3 <b>119.125</b>	FAYETTEVILLE APP CON <b>133.0 290.25</b>	UNICOM <b>122.8 (CTAF) 0</b>
--------------------------	---	---------------------------------



CATEGORY	A	B	C	D
CIRCLING	760-1 616 (700-1)	780-1 636 (700-1)	840-2 696 (700-2)	840-2¼ 696 (700-2¼)

SE-2, 21 APR 2022 to 19 MAY 2022

SE-2, 21 APR 2022 to 19 MAY 2022