

WAAS CH 99433 W23A	APP CRS 233°	Rwy ldg TDZE 1026 Apt Elev 1032	4710
--	------------------------	---	-------------

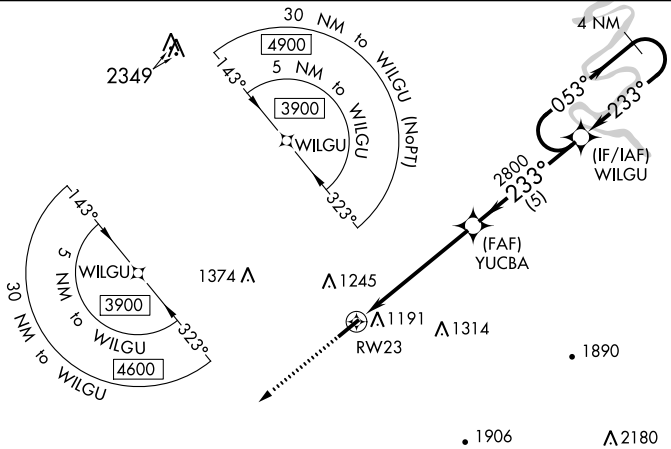
RNAV (GPS) RWY 23

WARREN COUNTY MEML (RNC)

⚠ Baro-VNAV and VDP NA when using Upper Cumberland Rgnl altimeter setting. For uncompensated Baro-VNAV systems, LNAV/VNAV NA below -17°C (2°F) or above 54°C (130°F). DME/DME RNP -0.3 NA. Night Landing: Rwy 5 NA. Helicopter visibility reduction below ¼ SM NA. When local altimeter setting not received, use Cumberland Rgnl altimeter setting and increase all DA 62 feet, and all MDA 80 feet; increase LNAV/VNAV all Cats, LNAV Cats C and D, and Circling Cat C visibility ½ mile, and increase Circling Cat D visibility ½ mile.

MISSED APPROACH:
Climb to 3900 direct ZOVRI and hold.

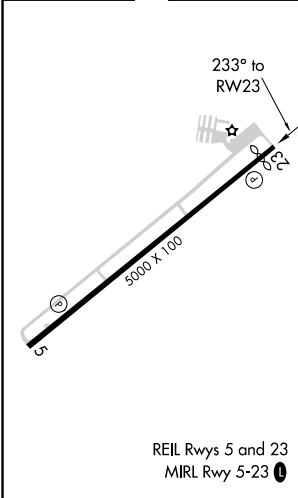
AWOS-3 135.525	MEMPHIS CENTER 128.15 323.125	UNICOM 122.8 (CTAF) 0
--------------------------	---	---------------------------------



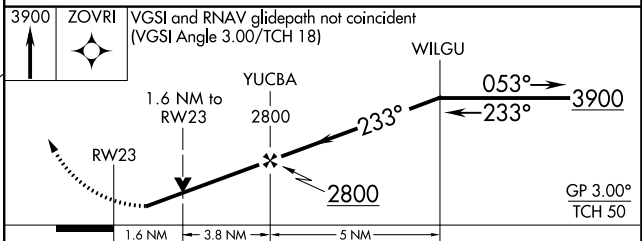
SE-1, 21 APR 2022 to 19 MAY 2022

SE-1, 21 APR 2022 to 19 MAY 2022

ELEV 1032	D	TDZE 1026
-----------	----------	-----------



REIL Rwys 5 and 23
MIRL Rwy 5-23 **0**



CATEGORY	A	B	C	D
LPV DA	1276-1		250 (300-1)	
LNAV/VNAV DA	1423-1½		397 (400-1½)	
LNAV MDA	1580-1 554 (600-1)		1580-1½ 554 (600-1½)	
C CIRCLING	1580-1 548 (600-1)	1600-1 568 (600-1)	1600-1½ 568 (600-1½)	1700-2 668 (700-2)