

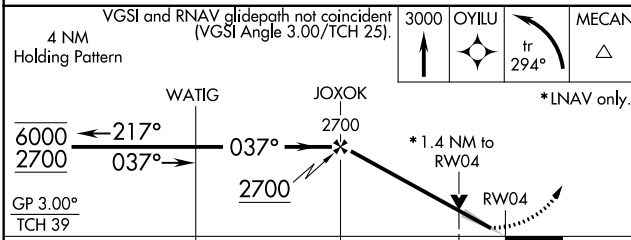
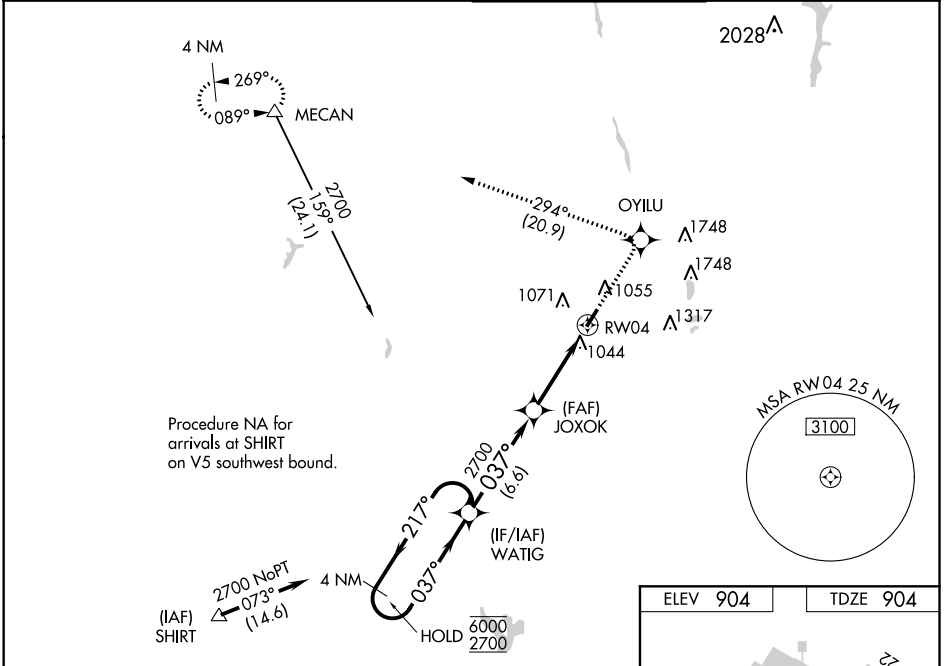
WAAS CH 90505 W04A	APP CRS 037°	Rwy Idg TDZE Apt Elev	5500 904 904
--	------------------------	-----------------------------	---

RNAV (GPS) RWY 4

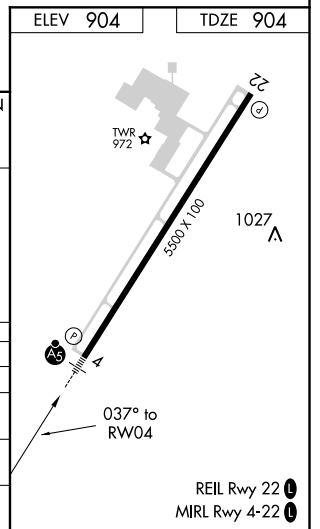
BOLTON FLD (TZR)

RNP APCH.	MALSR 	MISSED APPROACH: Climb to 3000 direct OYILU and left turn on track 294° to MECAN and hold.
▽ For uncompensated Baro-VNAV systems, LNAV/VNAV NA below -16°C or above 54°C. For inop ALS, increase LNAV/VNAV all Cats visibility to 1¼ SM and LNAV Cats C/D visibility to 1¾ SM.		

AWOS-3 135.925	COLUMBUS APP CON 134.0 279.6	BOLTON TOWER ★ 128.1 (CTAF) 0	GND CON 121.8
--------------------------	--	---	-------------------------



CATEGORY	A	B	C	D
LPV DA		1163-½	259 (300-½)	
LNAV/VNAV DA		1325-1	421 (500-1)	
LNAV MDA	1360-½	456 (500-½)	1360-⅞ 456 (500-⅞)	1360-1 456 (500-1)
CIRCLING	1360-1 456 (500-1)	1380-1 476 (500-1)	1380-1½ 476 (500-1½)	1500-2 596 (600-2)



EC-2, 21 APR 2022 to 19 MAY 2022

EC-2, 21 APR 2022 to 19 MAY 2022