

|  |                        |   |             |
|--|------------------------|---|-------------|
| WAAS<br>CH <b>97605</b><br><b>W07A</b> | APP CRS<br><b>073°</b> | Rwy Idg<br>TDZE <b>891</b><br>Apt Elev <b>891</b> | <b>5000</b> |
|--|------------------------|---|-------------|

# RNAV (GPS) RWY 7

OCONEE COUNTY RGNL (CEU)

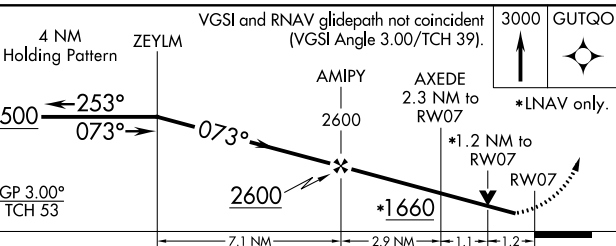
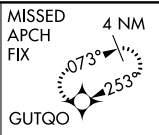
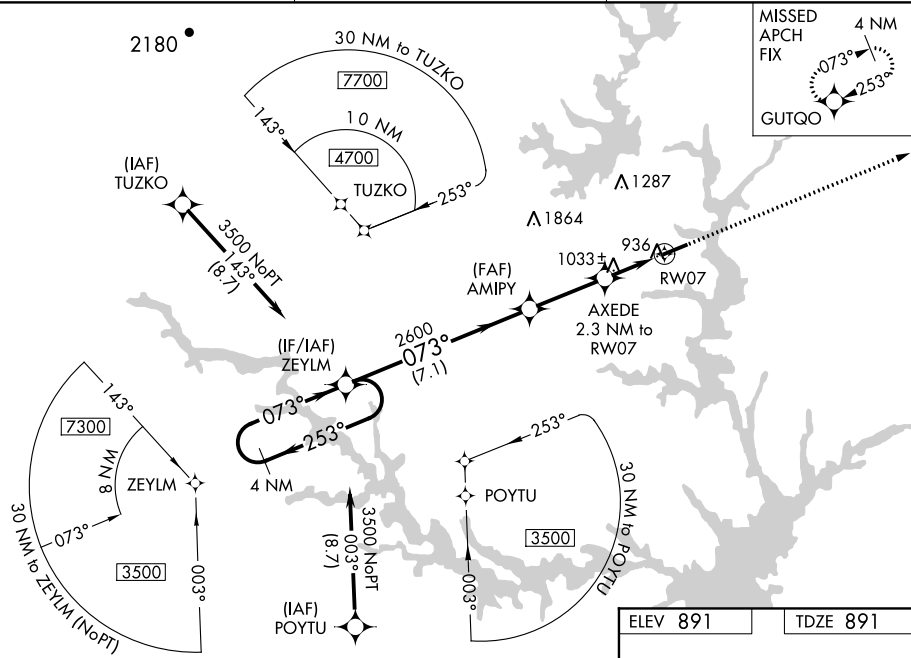
**⚠** Baro-VNAV NA when using Anderson altimeter setting. For uncompensated Baro-VNAV systems, LNAV/VNAV NA below -6°C (22°F) or above 54°C (130°F). DME/DME RNP-0.3 NA.  
**⚠** When local altimeter setting not received, use Anderson altimeter setting and increase all DA 47 feet and all MDA 60 feet; increase LPV and LNAV/VNAV Cats A and B, and LNAV Cat C visibility ¼ mile. Helicopter visibility reduction below ¼ SM NA.

**MISSED APPROACH:**  
Climb to 3000 direct GUTQO and hold.

ASOS  
**119.275**

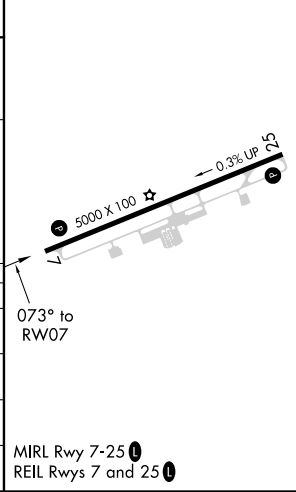
GREER APP CON ★  
**118.8 270.275**

UNICOM  
**122.7 [CTAF] 0**



|          |          |
|----------|----------|
| ELEV 891 | TDZE 891 |
|----------|----------|

| CATEGORY          | A                     | B                     | C                       | D  |
|-------------------|-----------------------|-----------------------|-------------------------|----|
| LPV DA            | 1146-¾                | 255 (300-¾)           | 1146-1<br>255 (300-1)   | NA |
| LNAV/VNAV DA      | 1144-¾                | 253 (300-¾)           | 1144-1<br>253 (300-1)   | NA |
| LNAV MDA          | 1300-1                | 409 (500-1)           | 1300-1½<br>409 (500-1½) | NA |
| <b>C</b> CIRCLING | 1300-1<br>409 (500-1) | 1360-1<br>469 (500-1) | 1640-2¼<br>749 (800-2¼) | NA |



SE-2, 21 APR 2022 to 19 MAY 2022

SE-2, 21 APR 2022 to 19 MAY 2022