

APP CRS 170°	Rwy Idg 2901
	TDZE 1045
	Apt Elev 1045

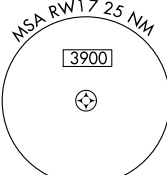
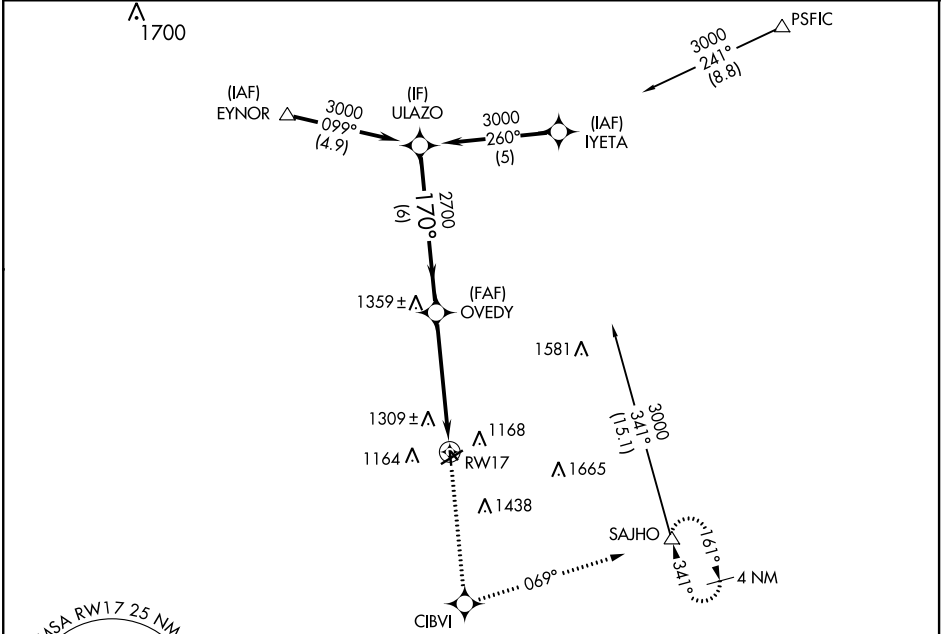
RNAV (GPS) RWY 17

RED OAK MUNI (RDK)

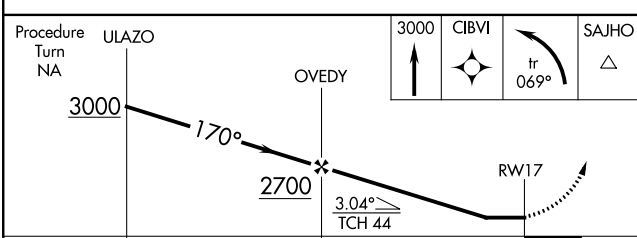
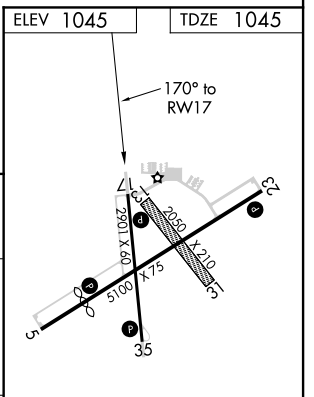
⚠ DME/DME RNP-0.3 NA. Visibility reduction by helicopters NA. When local altimeter setting not received, use Shenandoah altimeter setting and increase all MDA 60 feet, and increase Circling Cat B visibility ¼ mile. Circling NA to Rwy 13 and 31.

⚠ MISSED APPROACH: Climb to 3000 direct CIBVI and left turn via track 069° to SAJHO and hold.

AWOS-3P 123.925	OMAHA APP CON 124.5 263.0	UNICOM 122.8 (CTAF)
---------------------------	-------------------------------------	-------------------------------



ELEV 1045	TDZE 1045
-----------	-----------



CATEGORY	A	B	C	D
INAV MDA	1600-1	555 (600-1)		NA
CIRCLING	1620-1 575 (600-1)	1780-1 735 (800-1)		NA

MIRL Rwy 5-23 and 17-35
REIL Rwy 5, 17, 23, and 35

NC-3, 21 APR 2022 to 19 MAY 2022

NC-3, 21 APR 2022 to 19 MAY 2022