

WAAS CH 70532 W15A	APP CRS 152°	Rwy Idg TDZE 1127 Apt Elev 1127	3399
--	------------------------	---	-------------

RNAV (GPS) RWY 15

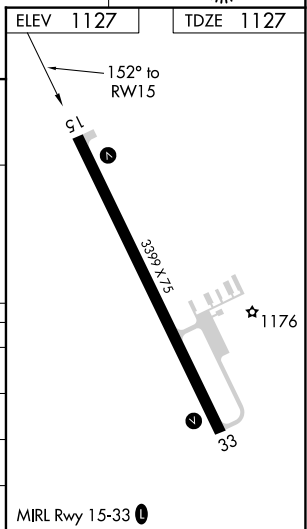
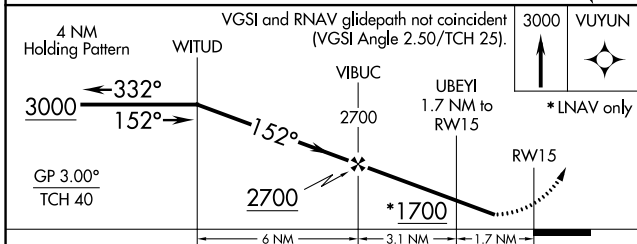
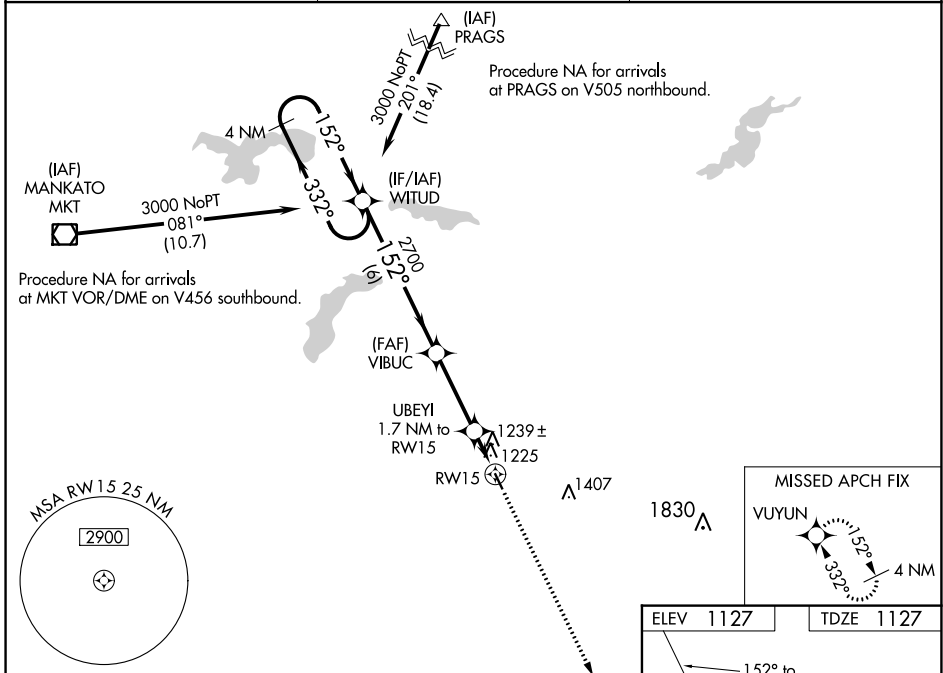
WASECA MUNI (ACQ)

RNP APCH.

▼ Baro-VNAV NA when using Owatonna altimeter setting. For uncompensated Baro-VNAV systems, LNAV/VNAV NA below -17°C or above 54°C. Procedure NA at night. When local altimeter setting not received, use Owatonna altimeter setting and increase all DA 34 feet and all MDAs 40 feet; increase LNAV/VNAV visibility all Cats 1/8 SM, LNAV and Circling Cat C visibility 1/4 SM. Rwy 15 helicopter visibility reduction below 1 SM NA.

MISSED APPROACH:
Climb to 3000 direct VUYUN and hold.

AWOS-3 118.425	MINNEAPOLIS CENTER 135.0 306.9	UNICOM 122.8 (CTAF) 0
--------------------------	--	---------------------------------



CATEGORY	A	B	C	D
LPV DA	1377-1	250 (300-1)		NA
LNAV/VNAV DA	1516-1 1/8	389 (400-1 1/8)		NA
LNAV MDA	1540-1	413 (500-1)	1540-1 1/8 413 (500-1 1/8)	NA
CIRCLING	1560-1 433 (500-1)	1620-1 493 (500-1)	1760-1 3/4 633 (700-1 3/4)	NA

NC-1, 21 APR 2022 to 19 MAY 2022

NC-1, 21 APR 2022 to 19 MAY 2022