

WAAS CH 97701 W10A	APP CRS 100°	Rwy Idg TDZE Apt Elev	5004 857 868
--	------------------------	-----------------------------	---

RNAV (GPS) RWY 10

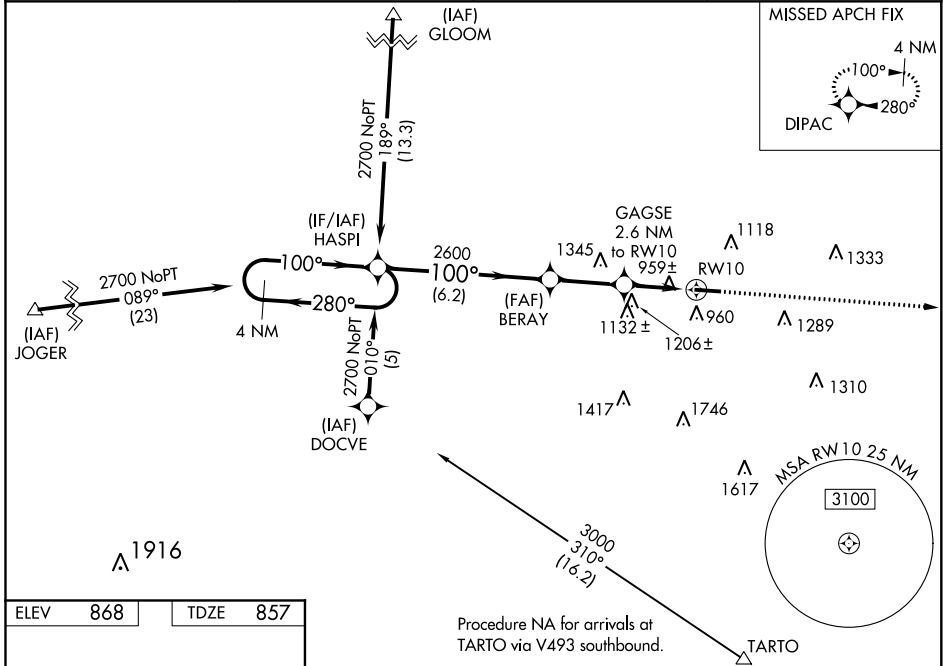
FAIRFIELD COUNTY (LHQ)

RNP APCH.

Baro-VNAV and VDP NA when using Rickenbacker Intl altimeter setting. For uncompensated Baro-VNAV systems, LNAV/VNAV NA below -16°C or above 54°C. When local altimeter setting not received, use Rickenbacker Intl altimeter setting and increase all DAs 48 feet, and all MDAs 60 feet, and increase LPV, LNAV/VNAV all Cats and Circling Cat C visibility ¼ mile. Rwy 10 helicopter visibility reduction below ¾ SM NA.

MISSED APPROACH:
Climb to 2800 direct
DIPAC and hold.

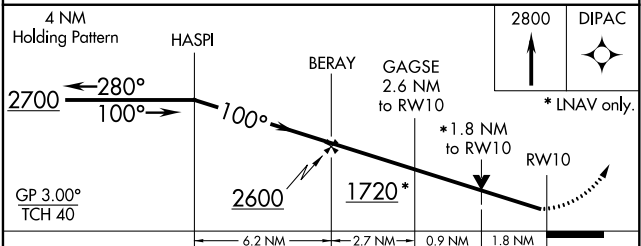
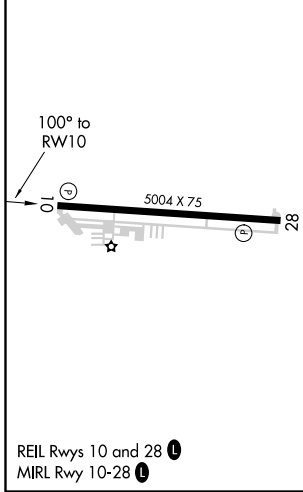
ASOS 118.375	COLUMBUS APP CON 134.0 279.6	CLNC DEL 121.65	UNICOM 122.725 (CTAF)
------------------------	--	---------------------------	---------------------------------



EC-2, 21 APR 2022 to 19 MAY 2022

EC-2, 21 APR 2022 to 19 MAY 2022

ELEV	868	TDZE	857
------	-----	------	-----



CATEGORY	A	B	C	D
LPV DA	1170-1 313 (400-1)			NA
LNAV/VNAV DA	1291-1 ½ 434 (500-1 ½)			NA
LNAV MDA	1460-1	603 (600-1)	1460-1 ¾ 603 (600-1 ¾)	NA
CIRCLING	1520-1 652 (700-1)	1560-1 692 (700-1)	1720-2 ½ 852 (900-2 ½)	NA