

WAAS CH 69628 W28A	APP CRS 280°	Rwy Idg TDZE Apt Elev	5004 868 868
--	------------------------	-----------------------------	---

RNAV (GPS) RWY 28

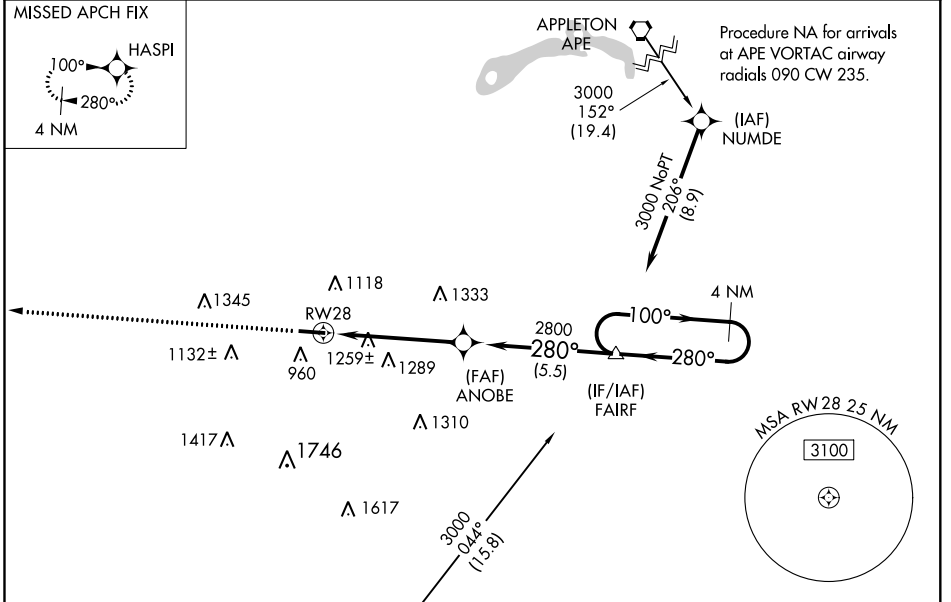
FAIRFIELD COUNTY (L.H.Q.)

RNP APCH.

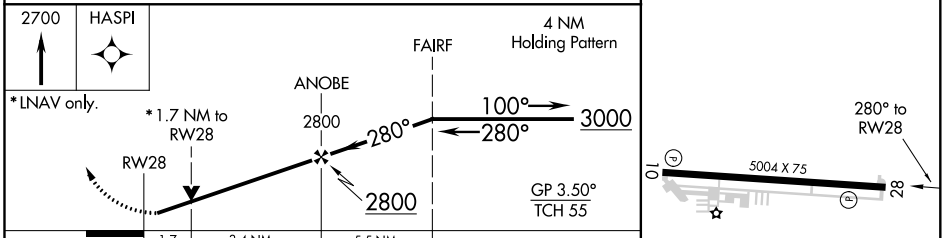
▼ Baro-VNAV NA when using Rickenbacker Intl altimeter setting. For uncompensated Baro-VNAV systems, LNAV/VNAV NA below -24°C or above 54°C. Rwy 28 helicopter visibility reduction below ¾ SM NA. VDP NA with Rickenbacker Intl altimeter setting. When local altimeter setting not received, use Rickenbacker Intl altimeter setting and increase all DA 48 feet; increase all MDA 60 feet.

MISSED APPROACH: Climb to 2700 direct HASPI and hold.

ASOS 118.375	COLUMBUS APP CON 134.0 279.6	CLNC DEL 121.65	UNICOM 122.725 (CTAF) 0
------------------------	--	---------------------------	-----------------------------------



ELEV	868	TDZE	868
------	-----	------	-----



CATEGORY	A	B	C	D
LPV DA	1068-¾	200 (200-¾)		NA
LNAV/VNAV DA	1641-2½	773 (800-2½)		NA
LNAV MDA	1520-1	652 (700-1)		NA
CIRCLING	1520-1 652 (700-1)	1560-1 692 (700-1)		NA

REIL Rwy 10 and 28 0

MIRL Rwy 10-28 0

EC-2, 21 APR 2022 to 19 MAY 2022

EC-2, 21 APR 2022 to 19 MAY 2022