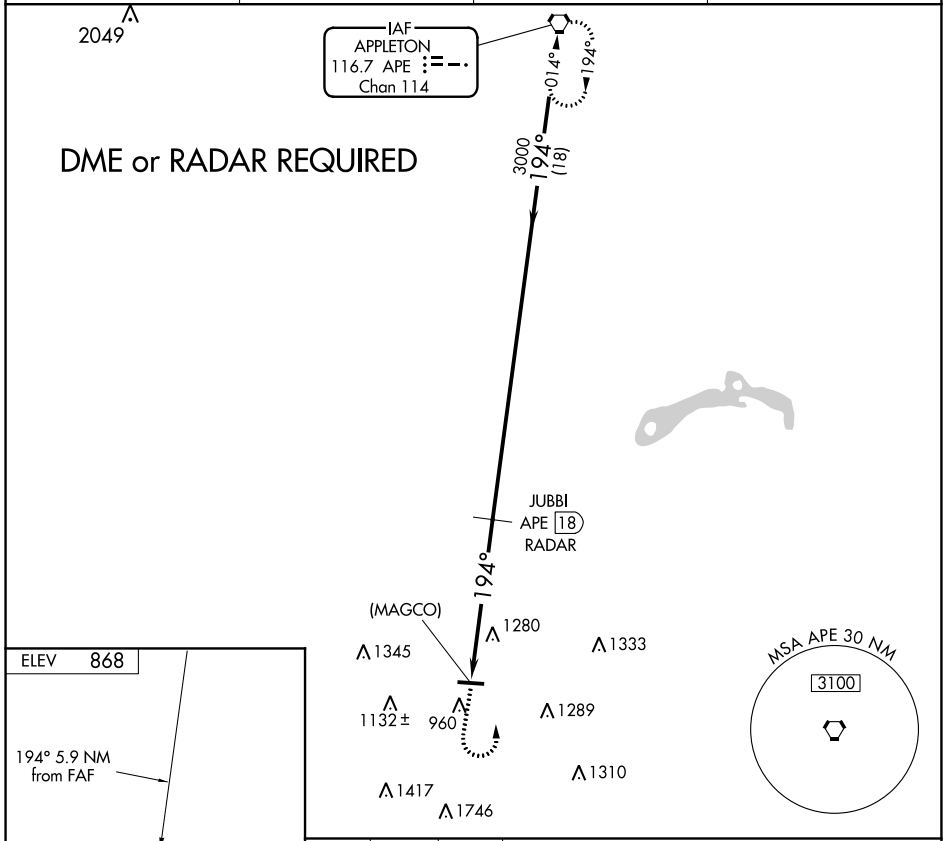


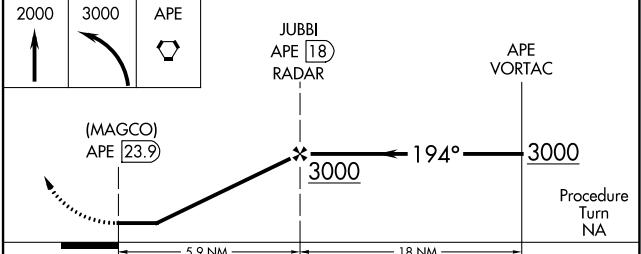
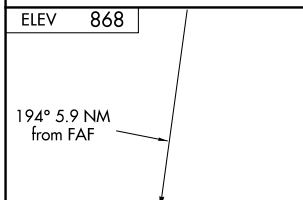
VORTAC APE 116.7 Chan 114	APP CRS 194°	Rwy Idg TDZE Apt Elev	N/A N/A 868
---	------------------------	-----------------------------	--

VOR or GPS-A
FAIRFIELD COUNTY (L.H.Q)

<p>▽ ▲ NA</p>		<p>MISSED APPROACH: Climb to 2000, then climbing left turn to 3000 direct APE VORTAC and hold.</p>	
ASOS 118.375	COLUMBUS APP CON 134.0 279.6	CLNC DEL 121.65	UNICOM 122.725 (CTAF) ①



DME or RADAR REQUIRED



REIL Rwys 10 and 28 ①
MIRL Rwy 10-28 ①

FAF to MAP 5.9 NM					
Knots	60	90	120	150	180
Min:Sec	5:54	3:56	2:57	2:22	1:58

CATEGORY	A	B	C	D
CIRCLING	1580-1 712 (800-1)	1580-1¼ 712 (800-1¼)	1720-2½ 852 (900-2½)	NA

EC-2, 21 APR 2022 to 19 MAY 2022

EC-2, 21 APR 2022 to 19 MAY 2022