

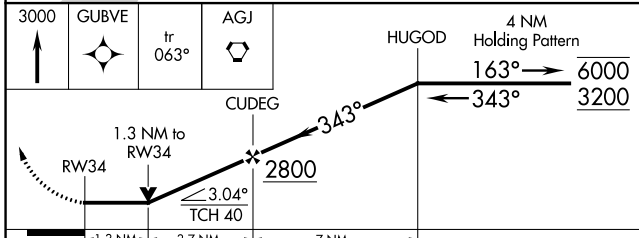
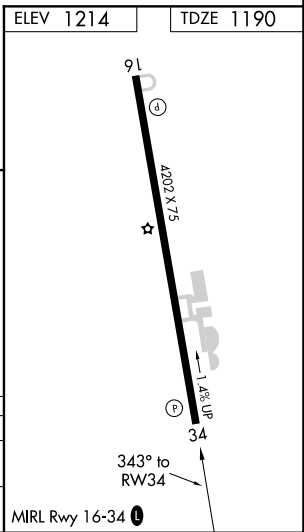
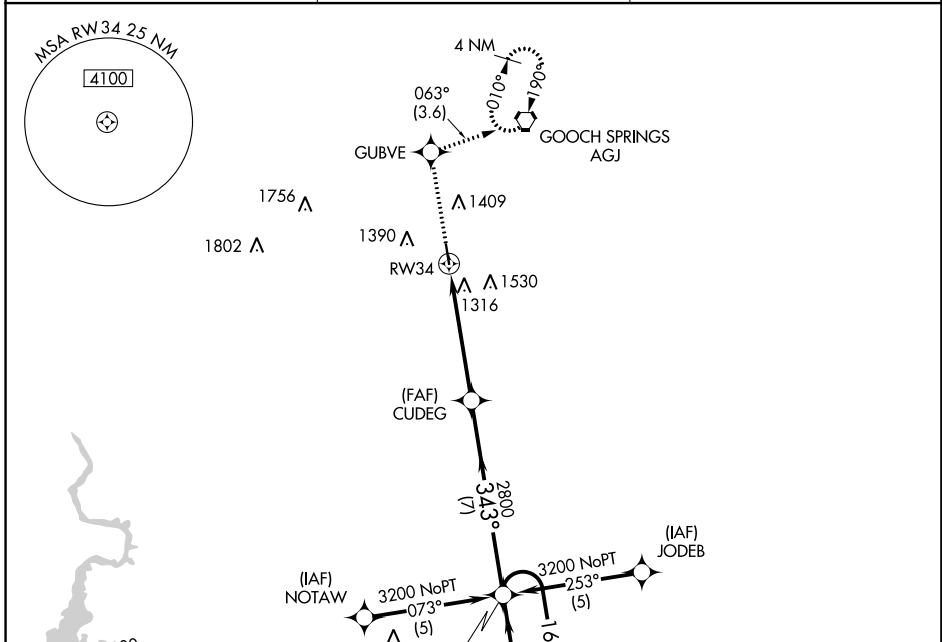
APP CRS <b>343°</b>	Rwy Idg <b>4202</b>
	TDZE <b>1190</b>
	Apt Elev <b>1214</b>

# RNAV (GPS) RWY 34

LAMPASAS (LZZ)

RNP APCH. ⚠ Circling Rwy 16 NA at night. Rwy 34 helicopter visibility reduction below 3/4 SM NA.	MISSED APPROACH: Climb to 3000 direct GUBVE and on track 063° to AGJ VORTAC and hold.
--	---

AWOS-3 <b>119.075</b>	GRAY APP CON <b>120.075 323.15</b>	UNICOM <b>122.8 (CTAF) 0</b>
--------------------------	---------------------------------------	---------------------------------



CATEGORY	A	B	C	D
LNVA MDA	1620-1	430 (500-1)	1620-1¼ 430 (500-1¼)	NA
CIRCLING	1680-1 466 (500-1)	1880-1 666 (700-1)	1880-1¾ 666 (700-1¾)	NA

SC-3, 21 APR 2022 to 19 MAY 2022

SC-3, 21 APR 2022 to 19 MAY 2022