

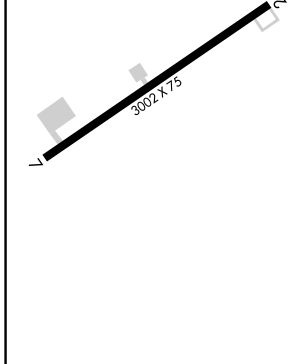
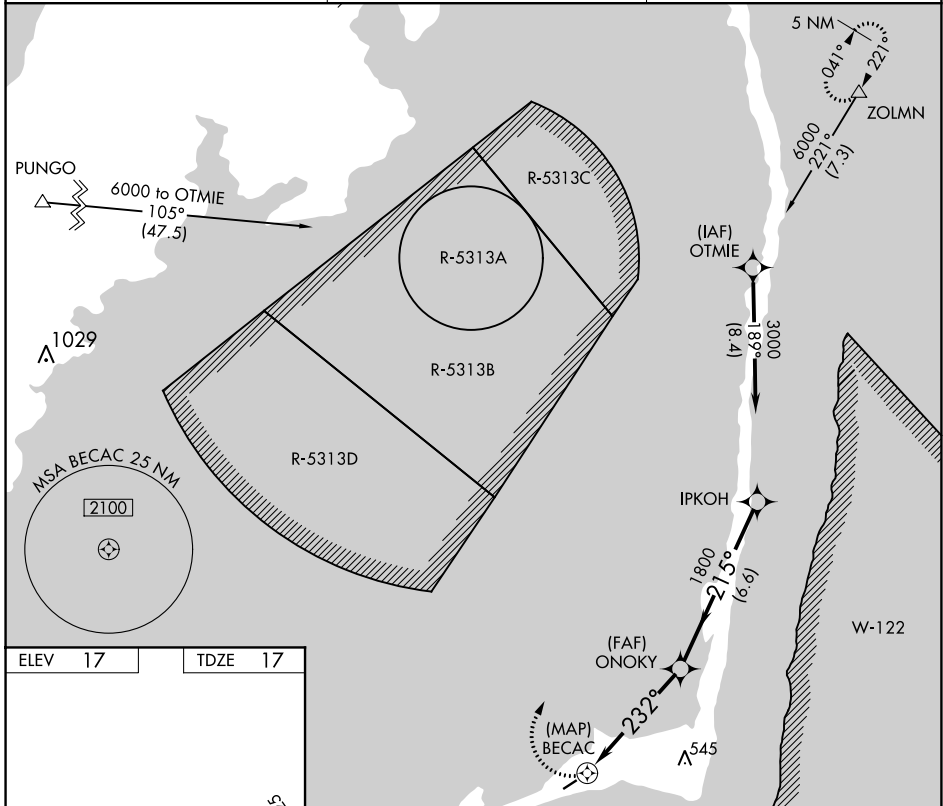
APP CRS	Rwy Idg	3002
232°	TDZE	17
	Apt Elev	17

RNAV (GPS) RWY 25

BILLY MITCHELL (HSE)

<p>NA</p> <p>Procedure NA at night. GPS or RNP-0.3 required. DME/DME RNP-0.3 NA.</p>	<p>MISSED APPROACH: Climbing right turn to 6000 via course 032° to ZOLMN WP and hold.</p>
---	---

<p>ASOS</p> <p>118.375</p>	<p>CHERRY POINT APP CON</p> <p>119.75 360.775</p>	<p>CTAF</p> <p>122.9</p>
-----------------------------------	--	---------------------------------



6000	ZOLMN	IPKOH		
crs 032°	ONOKY	3000		
	BECAC	Procedure Turn NA		
	232°	215°		
	3.00°	1800		
	TCH 40			
0.5	5 NM	6.6 NM		
CATEGORY	A	B	C	D
LNAV MDA	520-1	503 (600-1)	520-1½ 503 (600-1½)	NA
CIRCLING	560-1	543 (600-1)	560-1½ 543 (600-1½)	NA

SE-2, 21 APR 2022 to 19 MAY 2022

SE-2, 21 APR 2022 to 19 MAY 2022