

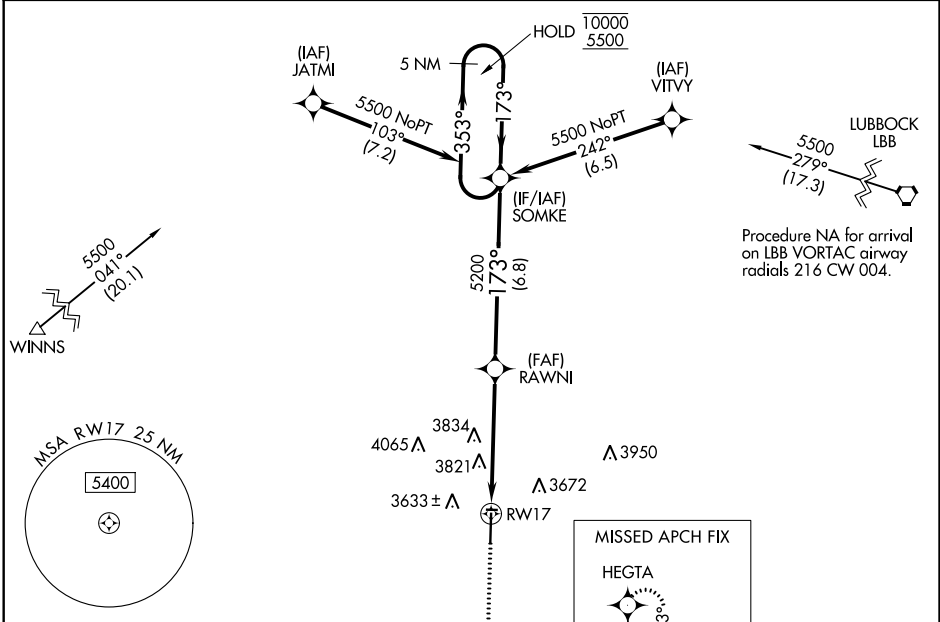
WAAS CH 77631 W17A	APP CRS 173°	Rwy Idg TDZE Apt Elev	6110 3508 3514
--	------------------------	-----------------------------	---

RNAV (GPS) RWY 17

LEVELLAND MUNI (LLN)

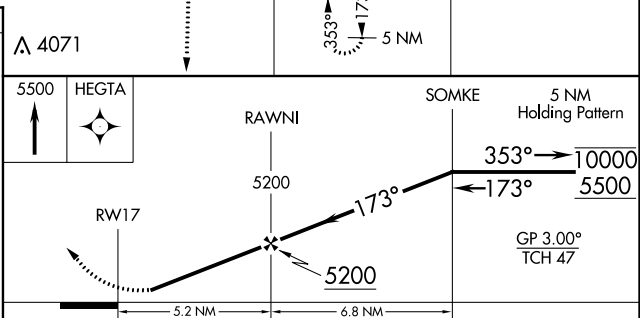
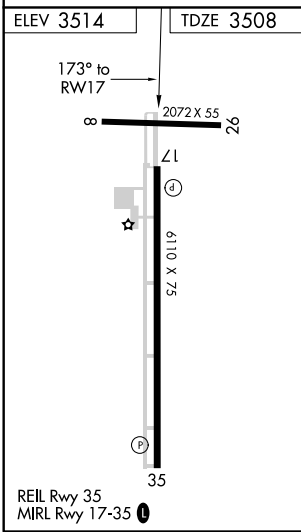
RNP APCH-GPS.	<p>▼ Rwy 17 helicopter visibility reduction below 3/4 SM NA. Baro-VNAV NA. Use Lubbock altimeter setting. Circling to Rwy 8, 26 NA at night. ▲ NA Circling NA west of Rwy 17-35.</p>	MISSED APPROACH: Climb to 5500 direct HEGTA and hold.
---------------	--	---

AWOS-3PT 121.125	LBB ASOS 125.3	LUBBOCK APP CON 119.2 351.8	UNICOM 122.8 (CTAF)
----------------------------	--------------------------	---------------------------------------	-------------------------------



SC-2, 21 APR 2022 to 19 MAY 2022

SC-2, 21 APR 2022 to 19 MAY 2022



CATEGORY	A	B	C	D
LPV DA		3856-1 1/8	348 (400-1 1/8)	
LNAV/VNAV DA		4268-2 3/4	760 (800-2 3/4)	
LNAV MDA	4180-1	672 (700-1)	4180-1 7/8	672 (700-1 7/8)
CIRCLING	4180-1 666 (700-1)	4300-1 786 (800-1)	4320-2 1/4 806 (900-2 1/4)	4320-2 1/2 806 (900-2 1/2)