

VOR/DME PUC 115.5 Chan 102	APP CRS 194°	Rwy Idg TDZE Apt Elev N/A N/A 5915
--	------------------------	--

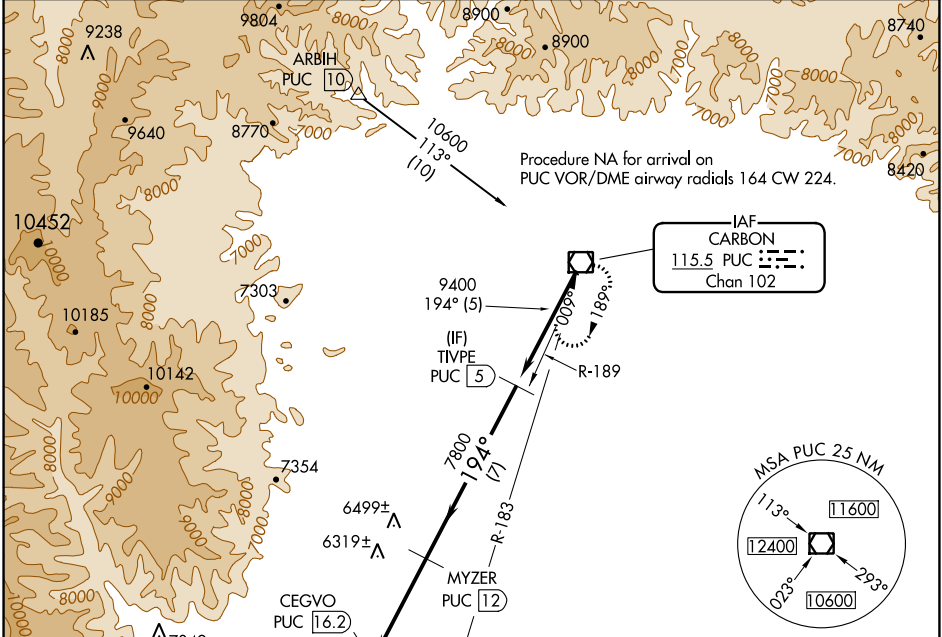
VOR-B

HUNTINGTON MUNI (69V)

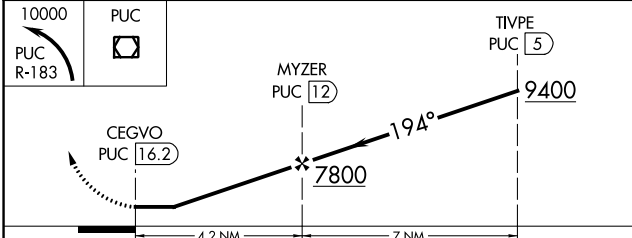
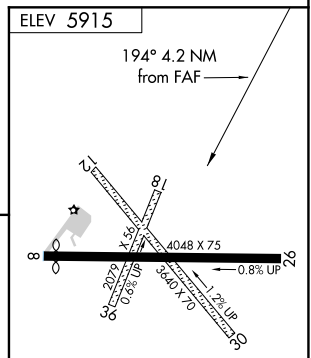
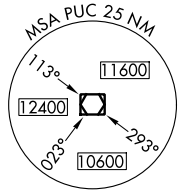
NA Rwy 8, 12, 26, 30 helicopter visibility reduction below 1 SM NA. DME required. Procedure NA at night. Use Price altimeter setting; when not received, procedure NA. Circling NA to Rwys 12-30 and 18-36.

MISSED APPROACH: Climbing left turn to 10000 on PUC VOR/DME R-183 to PUC VOR/DME and hold.

PUC ASOS 135.425	SALT LAKE CENTER 133.9 370.85	UNICOM 122.8 (CTAF) 0
----------------------------	---	--



IAF
CARBON
115.5 PUC [115.5]
Chan 102



CATEGORY	A	B	C	D
CIRCLING	6620-1	705 (800-1)	6800-2¾ 885 (900-2¾)	NA

MIRL Rwy 8-26 **0**

SW-4, 21 APR 2022 to 19 MAY 2022

SW-4, 21 APR 2022 to 19 MAY 2022