

APP CRS <b>138°</b>	Rwy Idg TDZE Apt Elev	<b>5000</b> <b>988</b> <b>989</b>
------------------------	-----------------------------	-----------------------------------------

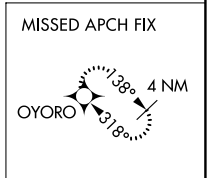
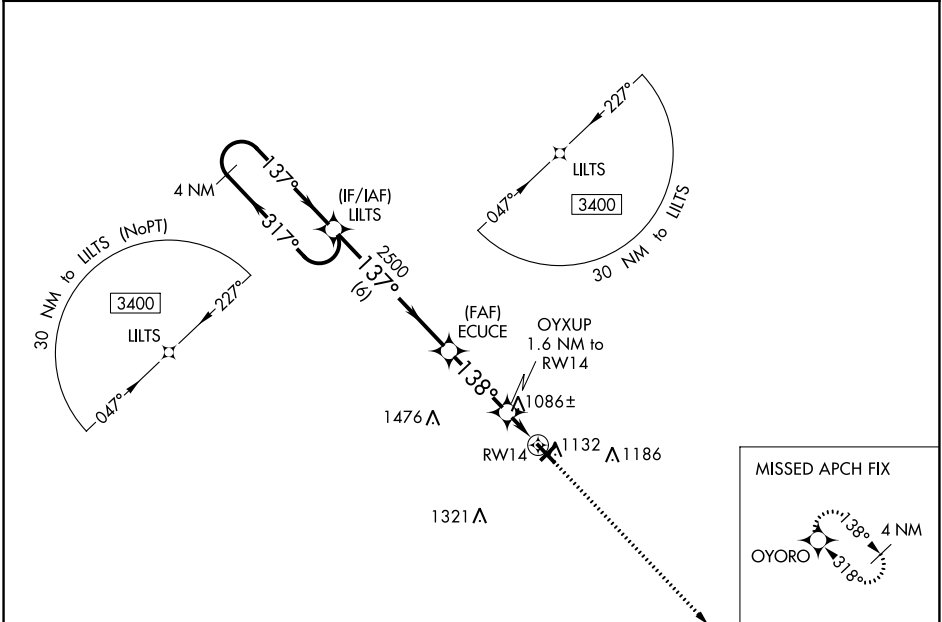
# RNAV (GPS) RWY 14

BURNETT COUNTY (RZN)

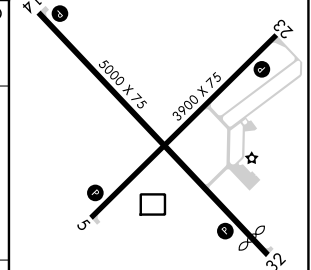
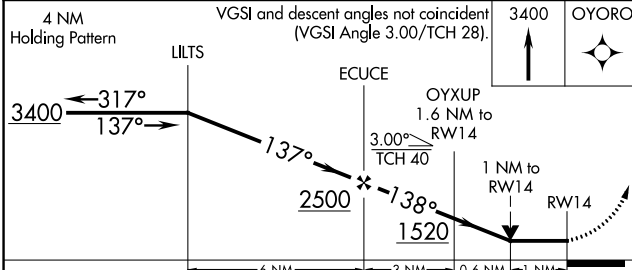
**⚠** DME/DME RNP-0.3 NA. VDP NA with Rush City, MN altimeter setting.  
**⚠** When local altimeter setting not received, use Rush City, MN altimeter setting and increase all MDA 80 feet; increase LNAV Cat C/D visibility and Circling Cat C/D visibility ¼ mile. Helicopter visibility reduction below ¾ SM NA. Night landing: Rwy 5, 23, 32 NA.

**MISSED APPROACH:**  
Climb to 3400 direct OYORO and hold.

AWOS-3 <b>118,325</b>	MINNEAPOLIS CENTER <b>121.05 397.9</b>	UNICOM <b>122.8</b> (CTAF) <b>📶</b>
--------------------------	-------------------------------------------	----------------------------------------



ELEV 989	TDZE 988
----------	----------



CATEGORY	A	B	C	D
LNAV MDA	1340-1 352 (400-1)			
<b>📶</b> CIRCLING	1440-1 451 (500-1)	1540-1½ 551 (600-1½)	1680-2¼ 691 (700-2¼)	

REIL Rwys 5, 14, 23 and 32 **📶**  
MRL Rwys 5-23 and 14-32 **📶**

EC-3, 21 APR 2022 to 19 MAY 2022

EC-3, 21 APR 2022 to 19 MAY 2022