

APP CRS	Rwy Idg	3900
046°	TDZE	989
	Apt Elev	989

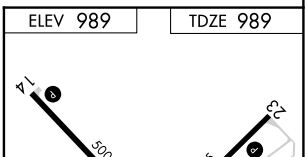
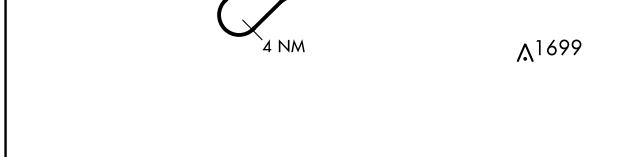
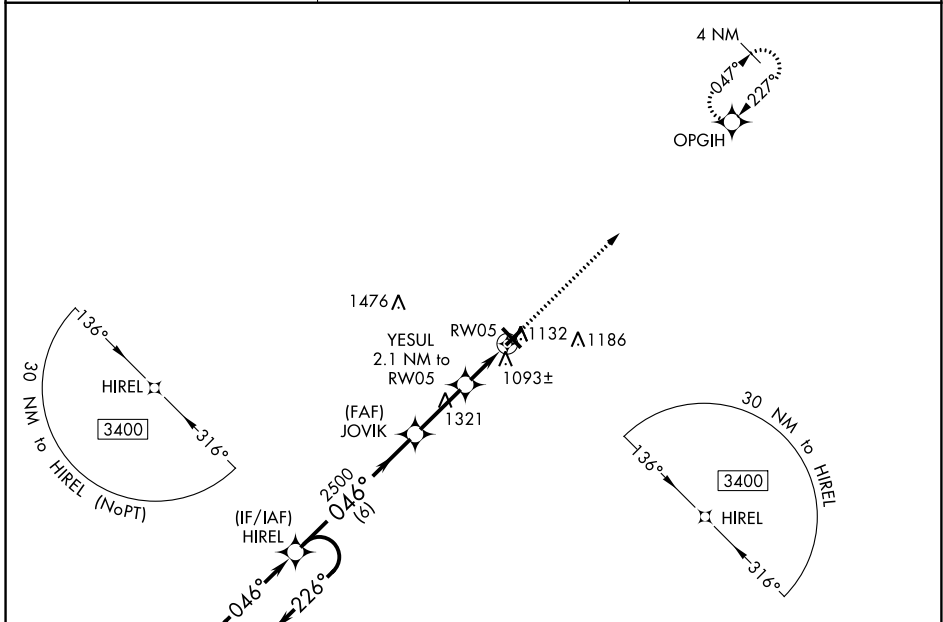
RNAV (GPS) RWY 5

BURNETT COUNTY (RZN)

⚠ DME/DME RNP-0.3 NA. Helicopter visibility reduction below 1 SM NA.
⚠ Night Landing: Rwy 5, 23, 32 NA. When local altimeter setting not received, use Rush City, MN altimeter setting and increase all MDA 80 feet; increase LNAV Cat C/D visibility 3/8 mile, and Circling Cat C/D visibility 1/4 mile.

MISSED APPROACH: Climb to 3400 direct OPGIH and hold.

AWOS-3 118.325	MINNEAPOLIS CENTER 121.05 397.9	UNICOM 122.8 (CTAF) 📶
--------------------------	---	--



4 NM Holding Pattern	HIREL	VGSI and descent angles not coincident (VGSI Angle 3.50/TCH 31).	3400	OPGIH
3400	← 226°	046° →	2500	JOVIK
		046°	1680	YESUL
		3.00° TCH 40		RWY 5
	6 NM	2.5 NM	2.1 NM	

CATEGORY	A	B	C	D
LNAV MDA	1360-1 371 (400-1)			
CIRCLING	1440-1	451 (500-1)	1540-1½ 551 (600-1½)	1680-2¼ 691 (700-2¼)

ELEV 989	TDZE 989
----------	----------

REIL Rws 5, 14, 23 and 32 **📶**
 MRL Rws 5-23 and 14-32 **📶**

EC-3, 21 APR 2022 to 19 MAY 2022

EC-3, 21 APR 2022 to 19 MAY 2022