

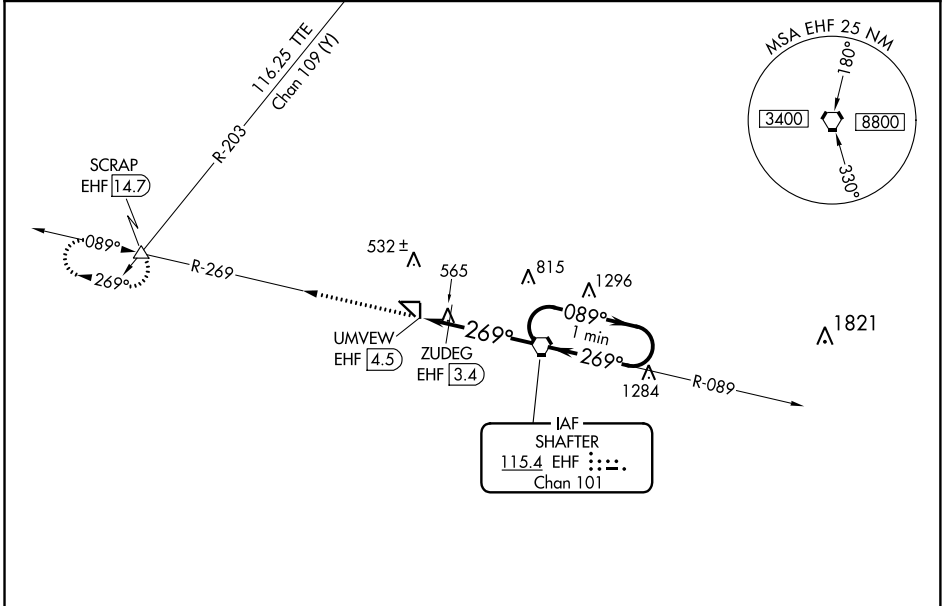
VORTAC EHF 115.4 Chan 101	APP CRS 269°	Rwy Idg TDZE Apt Elev	N/A N/A 425
--	------------------------	-----------------------------	--

VOR-A
SHAFTER-MINTER FLD (MIT)

NA Circling to Rwy 17, 35, 8 and 26 NA at night. When local altimeter setting not received, use Bakersfield altimeter setting and increase all MDAS 40 feet and increase Cat C visibility to 1 3/4.

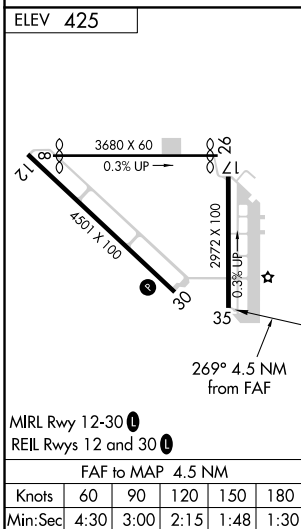
MISSED APPROACH: Climb to 4000 on EHF VORTAC R-269 to SCRAP INT/EHF 14.7 DME and hold, continue climb-in-hold to 4000.

AWOS-3 121.125	BAKERSFIELD APP CON * 126.45 270.3	CTAF 122.90
--------------------------	--	-----------------------



SW-3, 21 APR 2022 to 19 MAY 2022

SW-3, 21 APR 2022 to 19 MAY 2022



CATEGORY	A		B		C		D		
	1000-1		575 (600-1)		1000-1 1/2		575 (600-1 1/2)		
CIRCLING		1000-1		575 (600-1)		1000-1 1/2		NA	
ZUDEG FIX MINIMUMS									
CIRCLING		900-1		475 (500-1)		940-1 1/2		515 (600-1 1/2)	

*1040 when using Bakersfield altimeter setting.