

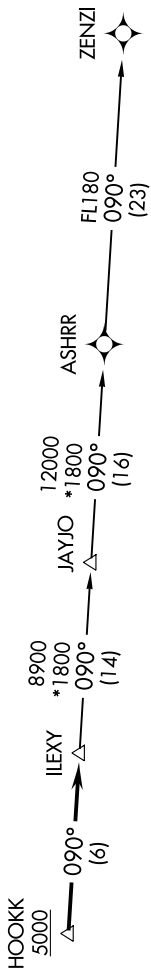
SC-3, 21 APR 2022 to 19 MAY 2022

**TOP ALTITUDE:  
ASSIGNED BY ATC**

UNICOM (CTAF)  
172.8  
AUSTIN DEPT CON  
127.225 - 317.65

TAKEOFF MINIMUMS:

Rwys 17, 35: Standard.



NOTE: RADAR required.

NOTE: DME/DME/IRU or GPS required.

NOTE: RNAV 1.

NOTE: Houston terminal area arrivals expect routing from ILEXY.

NOTE: JAYJO transition to join V306 only.

NOTE: Chart not to scale.

**DEPARTURE ROUTE DESCRIPTION**

TAKEOFF RUNWAY 17: Climb on heading 174° or as assigned by ATC for vectors to cross HOOKK at or above 5000, thence. . . .

TAKEOFF RUNWAY 35: Climb on heading 354° or as assigned by ATC for vectors to cross HOOKK at or above 5000, thence. . . .

. . . . on track 090° to ILEXY, then on transition. Maintain altitude assigned by ATC. Expect filed altitude 10 minutes after departure.

JAYJO TRANSITION (ILEXY3.JAYJO)  
ZENZI TRANSITION (ILEXY3.ZENZI)

SC-3, 21 APR 2022 to 19 MAY 2022