

WAAS CH 90535 W17A	APP CRS 174°	Rwy Idg 4000 TDZE 600 Apt Elev 600
--	------------------------	---

RNAV (GPS) RWY 17

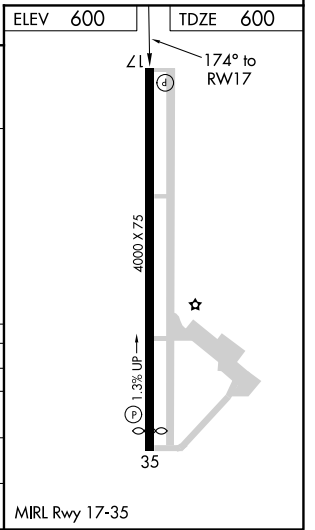
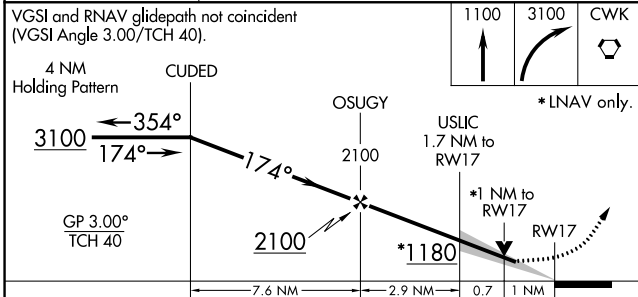
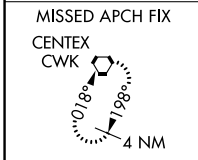
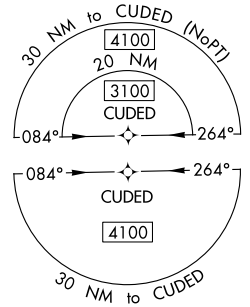
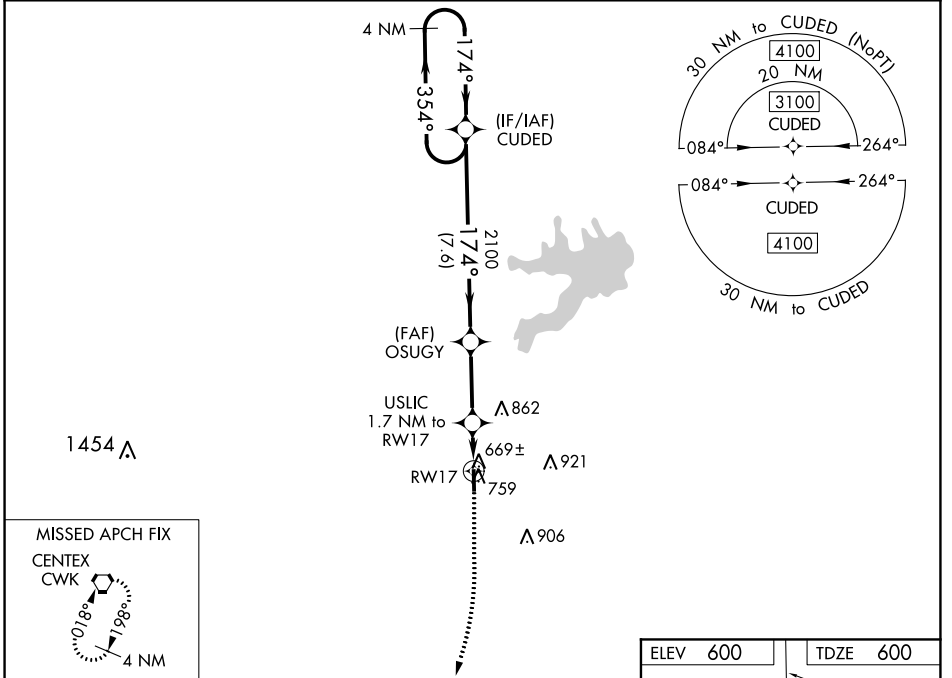
TAYLOR MUNI (T74)

RNP APCH.

▽ For uncompensated Baro-VNAV systems, LNAV/VNAV NA below -16C or above 54C. When local altimeter setting not received, use Austin Exect altimeter setting and increase all DA to 91.4 feet and all MDA 40 feet. VDP and Baro-VNAV NA when using Austin Exect altimeter setting.

▲ MISSED APPROACH: Climb to 1100 then climbing right turn to 3100 direct CWK VORTAC and hold.

AWOS-3PT 119.75	AUSTIN APP CON 127.225 317.65	UNICOM 122.8 (CTAF)
---------------------------	---	-------------------------------



CATEGORY		A	B	C	D
LPV DA		882-7/8	282 (300-7%)		NA
LNAV/VNAV DA		882-7/8	282 (300-7%)		NA
LNAV MDA		960-1	360 (400-1)		NA
C CIRCLING		1100-1	500 (500-1)		NA