

WAAS CH 87111 W35A	APP CRS 353°	Rwy Idg 5151 TDZE 7 Apt Elev 7
----------------------------------------	------------------------	-----------------------------------------------------------

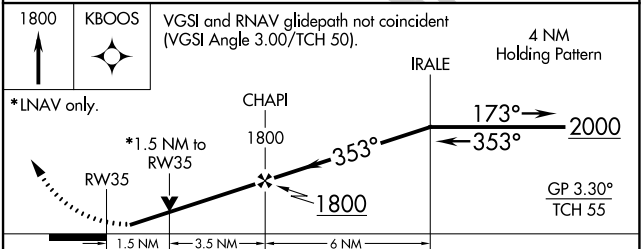
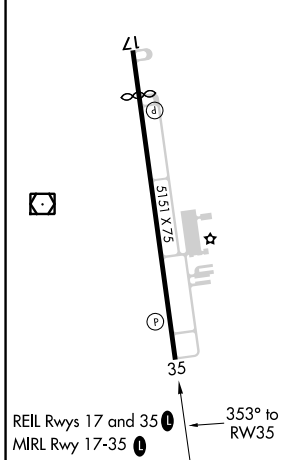
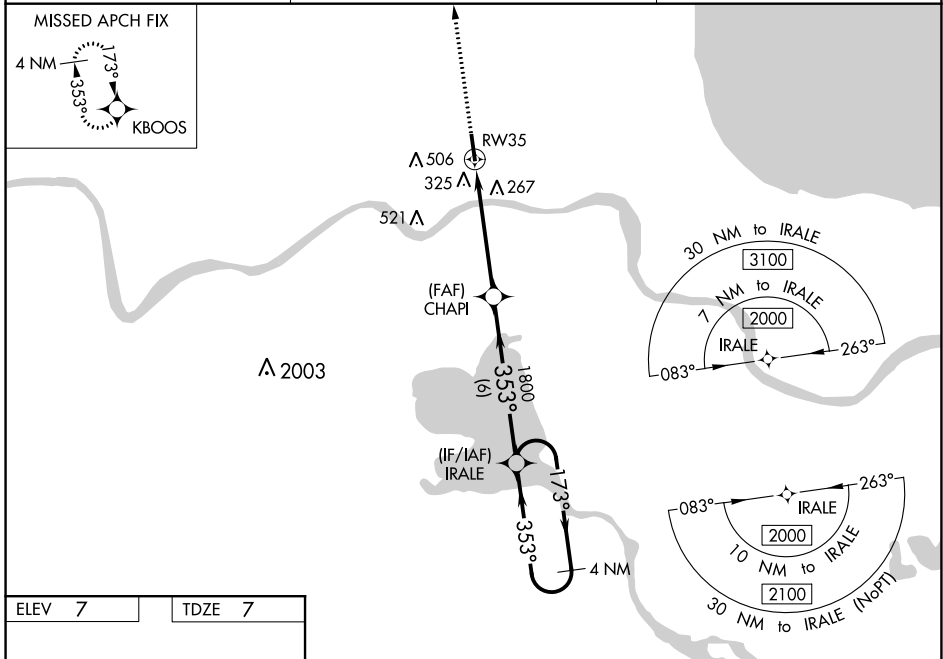
RNAV (GPS) RWY 35

PORT OF SOUTH LOUISIANA EXEC RGNL (A.P.S)

⚠ For uncompensated Baro-VNAV systems, LNAV/VNAV NA below -15°C (5°F) or above 54°C (130°F).
⚠ Rwy 35 helicopter visibility reduction below 3/4 SM NA. DME/DME RNP-0.3 NA. When local altimeter setting not received, use Louis Armstrong New Orleans Intl altimeter setting and increase LPV DA to 318 feet, LNAV/VNAV DA to 618 feet, all visibilities 1/2 SM; increase all MDA 60 feet and LNAV visibility Cat C 1/2 SM. Baro-VNAV and VDP NA with Louis Armstrong New Orleans Intl altimeter setting.

MISSED APPROACH:
Climb to 1800 direct KBOOS and hold.

AWOS-3PT 125.45	NEW ORLEANS APP CON 125.5 350.35	UNICOM 122.7 (CTAF) 0
---------------------------	--------------------------------------------	---------------------------------



CATEGORY	A	B	C	D
LPV DA	276-7/8	269 (300-7/8)		NA
LNAV/VNAV DA	576-13/4	569 (600-13/4)		NA
LNAV MDA	580-1	573 (600-1)	580-15/8 573 (600-15/8)	NA
C CIRCLING	700-1	693 (700-1)	820-21/2 813 (900-21/2)	NA

SC-4, 21 APR 2022 to 19 MAY 2022

SC-4, 21 APR 2022 to 19 MAY 2022