

RESERVE, LOUISIANA

AL-9134 (FAA)

21168

VOR/DME RQR <b>110.8</b> Chan <b>45</b>	APP CRS <b>335°</b>	Rwy Idg <b>5151</b> TDZE <b>7</b> Apt Elev <b>7</b>
---	------------------------	---

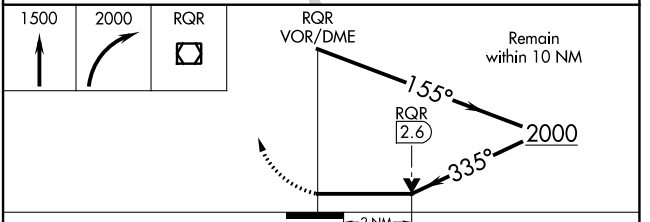
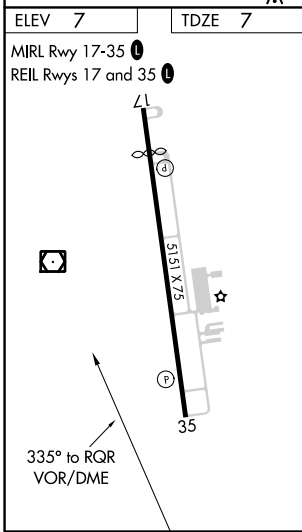
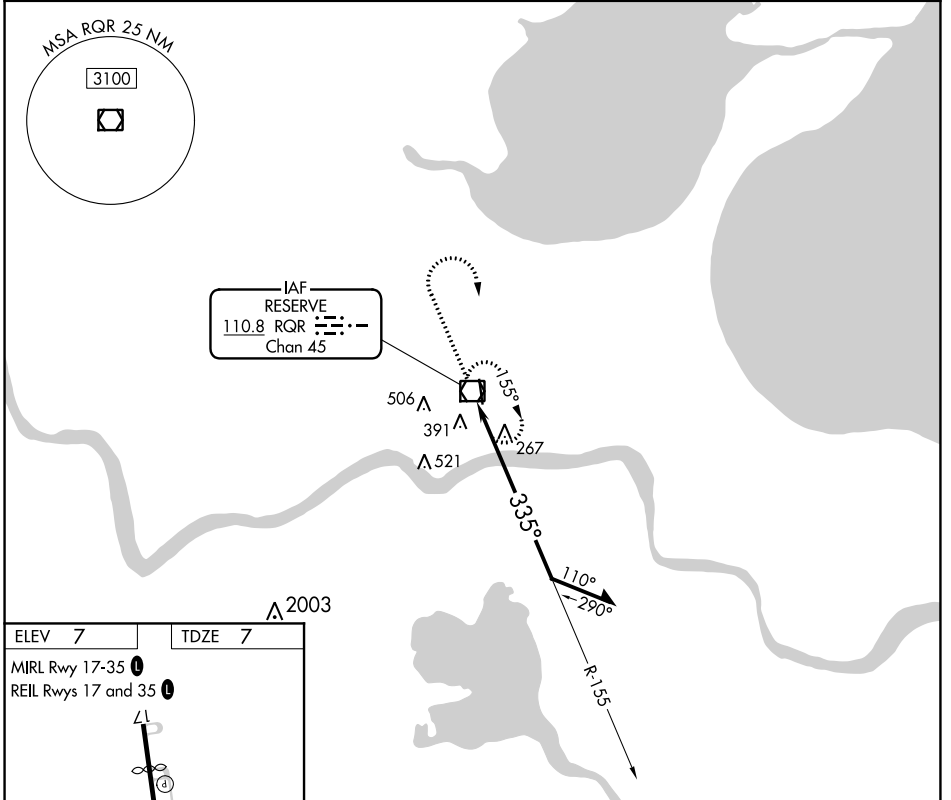
# VOR RWY 35

PORT OF SOUTH LOUISIANA EXEC RGNL (APS)

**⚠** Rwy 35 helicopter visibility reduction below  $\frac{3}{4}$  SM NA. When local altimeter setting not received, use Louis Armstrong New Orleans Intl altimeter setting and increase all MDA 60 feet, increase S-35 and Circling Cat B visibility  $\frac{1}{4}$  SM. VDP NA when using Louis Armstrong New Orleans Intl altimeter setting.

**⚠** MISSED APPROACH: Climb to 1500 then climbing right turn to 2000 direct RQR VOR/DME and hold.

AWOS-3PT <b>125.45</b>	NEW ORLEANS APP CON <b>125.5 350.35</b>	UNICOM <b>122.7 (CTAF) 0</b>
---------------------------	--	---------------------------------



CATEGORY	A	B	C	D
S-35	700-1	693 (700-1)	700-2 693 (700-2)	NA
<b>C</b> CIRCLING	700-1	693 (700-1)	820-2 $\frac{1}{2}$ 813 (900-2 $\frac{1}{2}$ )	NA

RESERVE, LOUISIANA  
Amdt 1A 05JAN17

PORT OF SOUTH LOUISIANA EXEC RGNL (APS)  
30°05'N-90°35'W

# VOR RWY 35

SC-4, 21 APR 2022 to 19 MAY 2022

SC-4, 21 APR 2022 to 19 MAY 2022