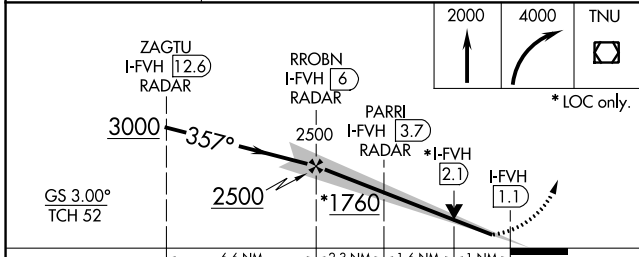
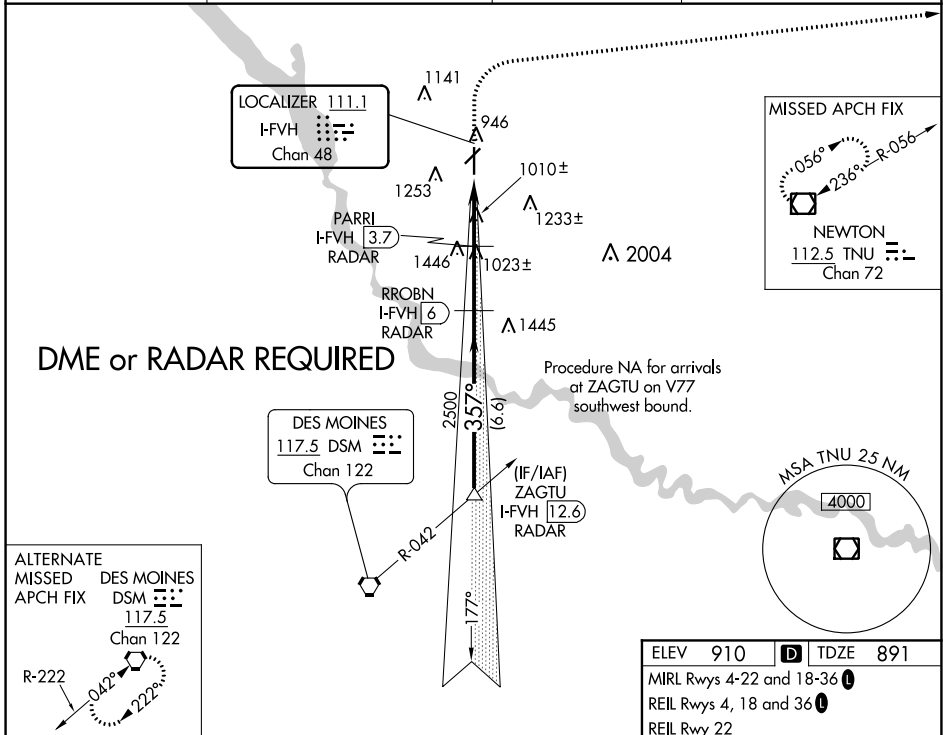


LOC/DME I-FVH 111.1 Chan 48	APP CRS 357°	Rwy Idg TDZE Apt Elev	5500 891 910
--	------------------------	-----------------------------	---

ILS or LOC RWY 36

ANKENY RGNL (IKV)

<p>NA Circling Rwy 22 NA at night. DME or RADAR required.</p>		<p>MISSED APPROACH: Climb to 2000 then climbing right turn to 4000 direct TNU VOR/DME and hold.</p>	
AWOS-3 119.175	DES MOINES APP CON 123.9 307.15	CLNC DEL 126.65	UNICOM 122.9 (CTAF)



ELEV 910	TDZE 891
MRL Rwy 4-22 and 18-36	
REIL Rwy 4, 18 and 36	
REIL Rwy 22	
FAF to MAP 4.9 NM	
Knots	60 90 120 150 180
Min:Sec	4:54 3:16 2:27 1:58 1:38

CATEGORY	A	B	C	D
S-ILS 36		1091-3/4	200 (200-3/4)	
S-LOC 36		1260-1	369 (400-1)	
CIRCLING	1560-1	650 (700-1)	1560-1 3/4 650 (700-1 3/4)	1760-2 3/4 850 (900-2 3/4)

NC-3, 21 APR 2022 to 19 MAY 2022

NC-3, 21 APR 2022 to 19 MAY 2022