

WAAS CH <b>82720</b> <b>W18A</b>	APP CRS <b>177°</b>	Rwy Idg TDZE Apt Elev	<b>5500</b> <b>903</b> <b>910</b>
--	------------------------	-----------------------------	---

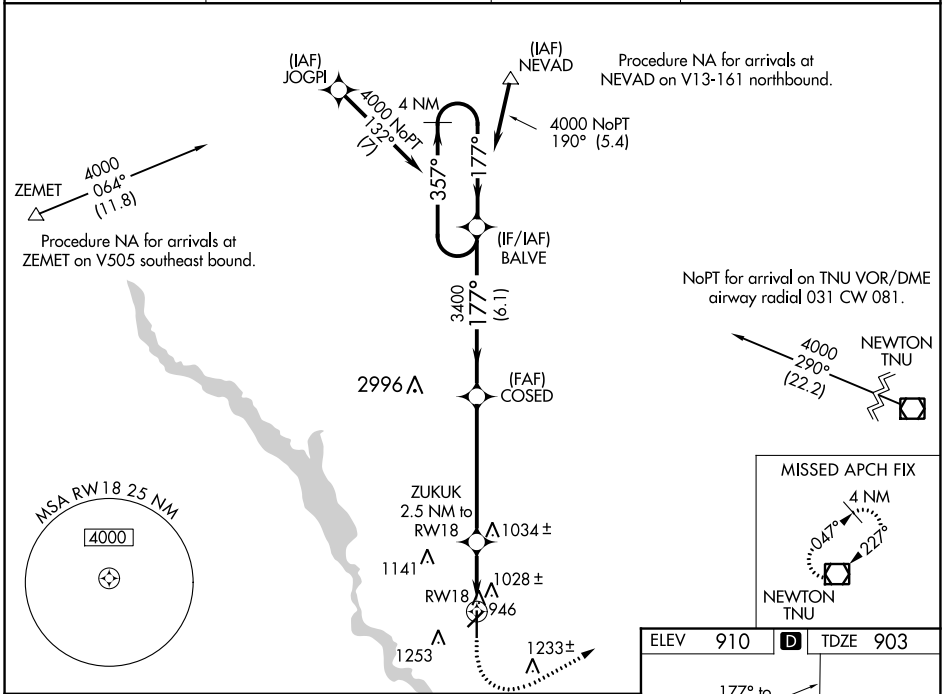
# RNAV (GPS) RWY 18

ANKENY RGNL (IKV)

**⚠** For uncompensated Baro-VNAV systems, LNAV/VNAV NA below -21° C (-5°F) or above 54°C (130°F). Circling Rwy 22 NA at night. Rwy 18 helicopter visibility reduction below ¾ SM NA. DME/DME RNP-0.3 NA.

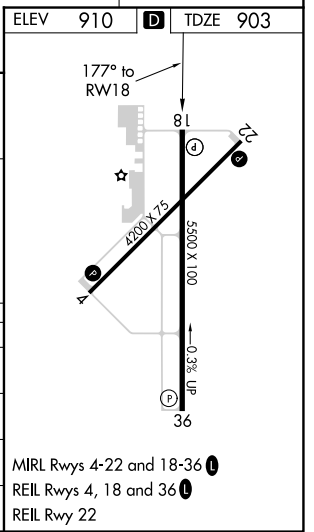
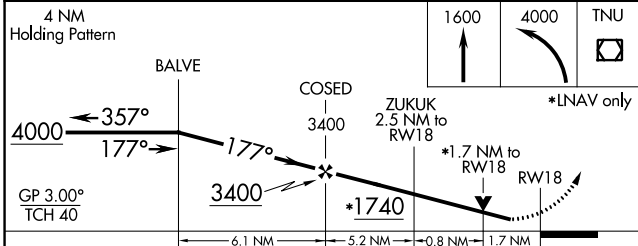
**MISSED APPROACH:** Climb to 1600 then climbing left turn to 4000 direct TNU VOR/DME and hold.

AWOS-3 <b>119.175</b>	DES MOINES APP CON <b>123.9 307.15</b>	CLNC DEL <b>126.65</b>	UNICOM <b>122.9 (CTAF)</b>
--------------------------	---	---------------------------	-------------------------------



NC-3, 21 APR 2022 to 19 MAY 2022

NC-3, 21 APR 2022 to 19 MAY 2022



CATEGORY	A	B	C	D
LPV DA		1153-7/8	250 (300-7/8)	
LNAV/VNAV DA		1354-1 1/2	451 (500-1 1/2)	
LNAV MDA	1480-1	577 (600-1)	1480-1 5/8	577 (600-1 5/8)
<b>C</b> CIRCLING	1560-1	650 (700-1)	1560-1 3/4 650 (700-1 3/4)	1760-2 3/4 850 (900-2 3/4)