

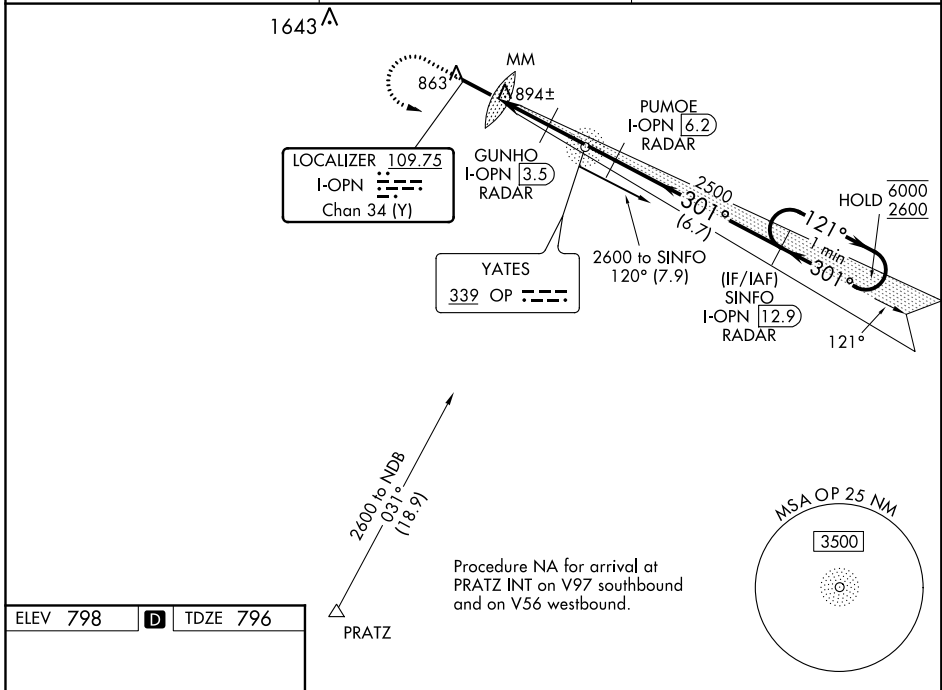
LOC/DME I-OPN 109.75 Chan 34 (Y)	APP CRS 301°	Rwy Idg 4962 TDZE 796 Apt Elev 798
--	------------------------	---

ILS or LOC RWY 30

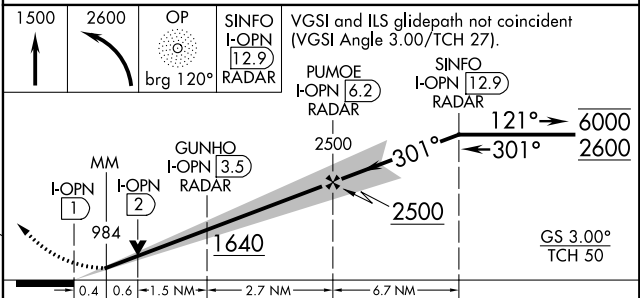
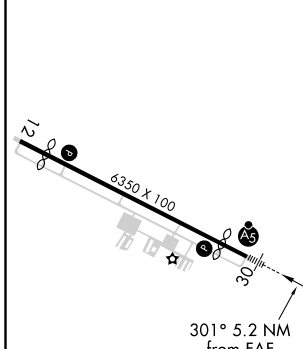
THOMASTON-UPSON COUNTY (OPN)

ADF required for procedure entry. DME or RADAR required.	MALSR 	MISSED APPROACH: Climb to 1500 then climbing left turn to 2600 direct OP NDB and brg 120° to SINFO/I-OPN 12.9 DME/RADAR and hold.
For inop ALS, increase S-LOC 30 Cats C, D visibility to 1 SM.		

AWOS-3 133.975	ATLANTA APP CON ★ 124.2 279.6	UNICOM 122.8 (CTAF) 0
--------------------------	---	--



ELEV 798	D	TDZE 796
----------	----------	----------



CATEGORY	A	B	C	D
S-ILS 30	996-1/2 200 (200-1/2)			
S-LOC 30	1160-1/2	364 (400-1/2)	1160-5/8	364 (400-5/8)
CIRCLING	1220-1 422 (500-1)	1260-1 462 (500-1)	1260-1 1/2 462 (500-1 1/2)	1680-3 882 (900-3)

SE-4, 21 APR 2022 to 19 MAY 2022

SE-4, 21 APR 2022 to 19 MAY 2022