

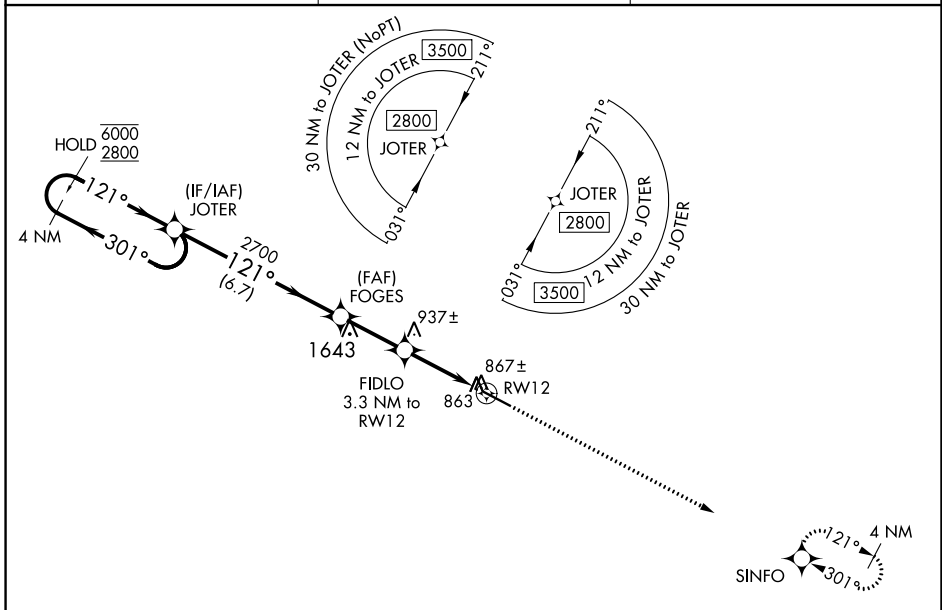
WAAS CH 63115 W12A	APP CRS 121°	Rwy Idg TDZE 791 Apt Elev 798	5525
--	------------------------	---	-------------

RNAV (GPS) RWY 12

THOMASTON-UPSON COUNTY (OPN)

RNP APCH-GPS.	MISSED APPROACH: Climb to 2600 direct SINFO and hold.
<p>T Rwy 12 helicopter visibility reduction below 3/4 SM NA. For uncompensated Baro-VNAV systems, LNAV/VNAV NA below -16°C or above 54°C.</p>	

AWOS-3 133.975	ATLANTA APP CON ★ 124.2 279.6	UNICOM 122.8 (CTAF) U
--------------------------	---	--



SE-4, 21 APR 2022 to 19 MAY 2022

SE-4, 21 APR 2022 to 19 MAY 2022

ELEV 798	D	TDZE 791
----------	----------	----------

VGSI and RNAV glidepath not coincident (VGSI Angle 3.50/TCH 32).

4 NM Holding Pattern	JOTER	FOGES	FIDLO	RWY 12
6000 2800	2700	1860	1680	
GP 3.00° TCH 40	6.7 NM	2.6 NM	2.5	0.8
	A	B	C	D
LPV DA		1041-3/4	250 (300-3/4)	
LNAV/VNAV MDA		1041-3/4	250 (300-3/4)	
LNAV MDA		1120-1	329 (400-1)	
CIRCLING	1220-1 422 (500-1)	1260-1 462 (500-1)	1260-1 1/2 462 (500-1 1/2)	1680-3 882 (900-3)

