

WAAS CH 70529 W29A	APP CRS 286°	Rwy Idg TDZE Apt Elev	4001 1277 1277
--	------------------------	-----------------------------	---

RNAV (GPS) RWY 29

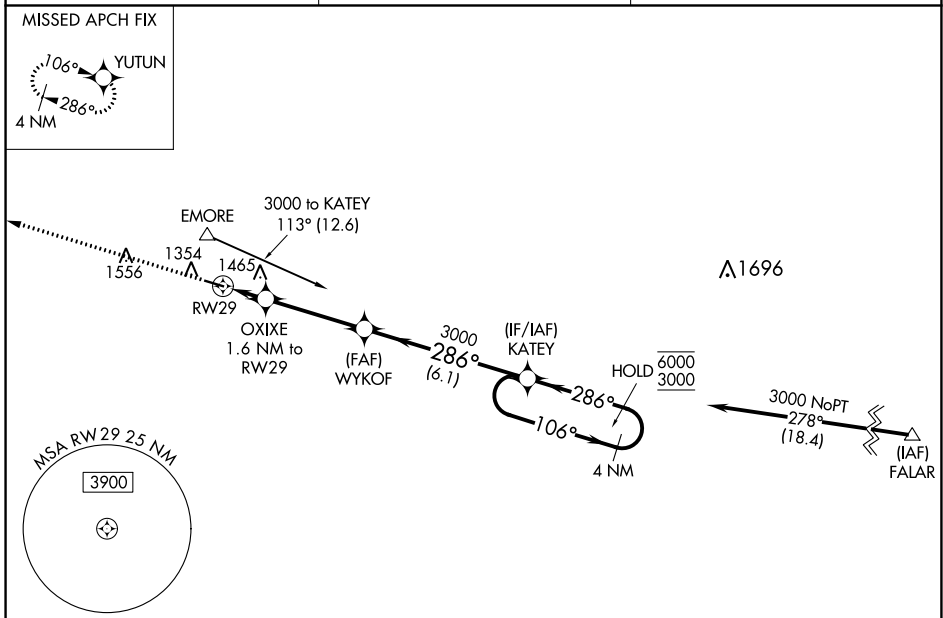
FILLMORE COUNTY (FKA)

RNP APCH-GPS.

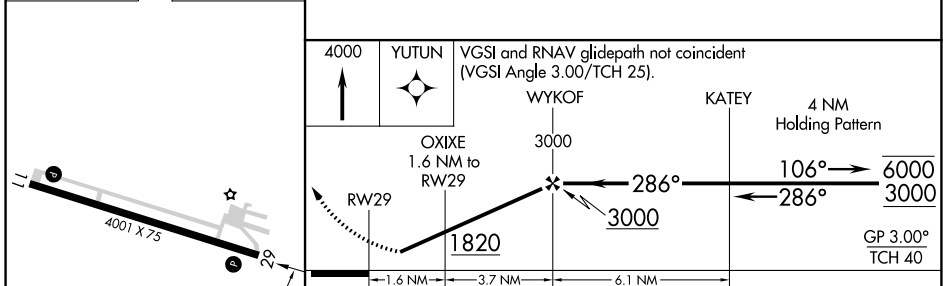
▼ Rwy 29 helicopter visibility reduction below 3/4 SM NA.
▲ For uncompensated Baro-VNAV systems, LNAV/VNAV NA below -17°C or above 54°C.

MISSED APPROACH: Climb to 4000 direct YUTUN and hold.

AWOS-3 118.55	ROCHESTER APP CON* 119.8 251.125	CTAF 122.9 0
-------------------------	--	------------------------



ELEV 1277	TDZE 1277
-----------	-----------



CATEGORY	A	B	C	D
LPV DA	1527-1 250 (300-1)			NA
LNAV/VNAV DA	1550-1 273 (300-1)			NA
LNAV MDA	1780-1	503 (600-1)	1780-1 3/8 503 (600-1 3/8)	NA
C CIRCLING	1780-1 503 (600-1)	1900-1 623 (700-1)	1900-1 3/4 623 (700-1 3/4)	NA

NC-1, 21 APR 2022 to 19 MAY 2022

NC-1, 21 APR 2022 to 19 MAY 2022