

WAAS CH 69239 W36A	APP CRS 358°	Rwy Idg TDZE Apt Elev	4238 779 783
--	------------------------	-----------------------------	---

RNAV (GPS) RWY 36

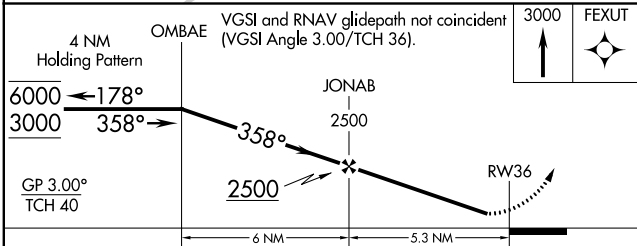
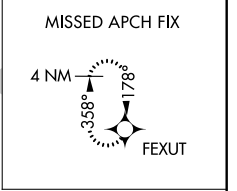
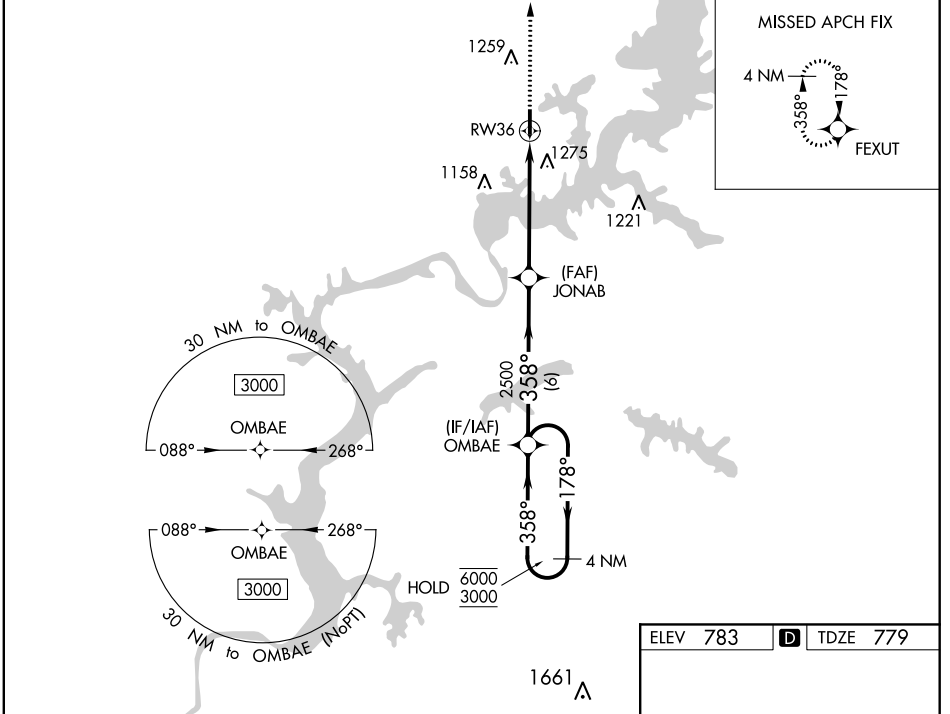
SOUTH GRAND LAKE RGNL (1K8)

RNP APCH - GPS.

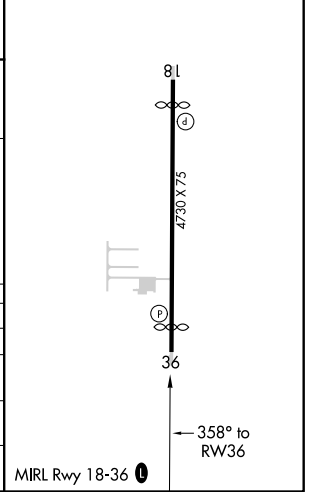
NA Circling to Rwy 18 NA at night. Rwy 36 helicopter visibility reduction below 3/4 SM NA. Baro-VNAV NA. Use Grove altimeter setting.

MISSED APPROACH: Climb to 3000 direct FEXUT and hold.

GMJ AWOS-3 119.025	KANSAS CITY CENTER 128.6 282.325	CTAF 122.90
------------------------------	--	-----------------------



ELEV 783	D TDZE 779
----------	-------------------



CATEGORY	A	B	C	D
LPV DA	1068-1		289 (300-1)	NA
LNAV/VNAV DA	1635-2 1/2		856 (900-2 1/2)	NA
LNAV MDA	1540-1 761 (800-1)	1540-1 1/4 761 (800-1 1/4)	1540-2 1/2 761 (800-2 1/2)	NA
C CIRCLING	1540-1 757 (800-1)	1620-1 1/4 837 (900-1 1/4)	1620-2 1/2 837 (900-2 1/2)	NA

SC-1, 21 APR 2022 to 19 MAY 2022

SC-1, 21 APR 2022 to 19 MAY 2022