

RUSHFORD MUNI—ROBERT W BUNKE FLD (55Y) 3 W UTC-6(-5DT) N43°48.95' W91°49.81'

CHICAGO

1211 B NOTAM FILE PNM

RWY 16-34: H3200X60 (ASPH) MIRL 0.9% up NW

RWY 16: PAPI(P2L)—GA 3.0° TCH 40'.

RWY 34: PAPI(P2L)—GA 3.0° TCH 40'.

SERVICE: FUEL 100LL LGT Actvt PAPI Rwy 16 and Rwy 34; MIRL Rwy 16-34; —CTAF.

AIRPORT REMARKS: Unattended. Self service fuel avbl with credit card.

Caution deer on and invof arpt.

AIRPORT MANAGER: (507) 864-2444

COMMUNICATIONS: CTAF 122.9

Ⓡ ROCHESTER APP/DEP CON 119.8 (1100-0500Z‡)

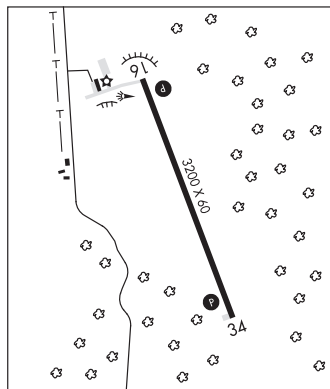
Ⓡ MINNEAPOLIS CENTER APP/DEP CON 132.35 (0500-1100Z‡)

CLEARANCE DELIVERY PHONE: For CD ctc Rochester Apch at 507-424-8111.

RADIO AIDS TO NAVIGATION: NOTAM FILE PNM.

NODINE (H) (H) VORTACW 117.9 ODI Chan 126 N43°54.74'

W91°28.05' 249° 16.8 NM to fld. 1282/1E.



ST CLOUD RGNL (STC)(KSTC) 4 E UTC-6(-5DT) N45°32.77' W94°03.56'

1031 B ARFF Index—See Remarks NOTAM FILE STC

RWY 13-31: H7500X150 (CONC-GRVD) S-75, D-175, 2S-175,

2D-280 PCN 54 R/B/W/U HIRL

RWY 13: MALSR. PAPI(P4R)—GA 3.0° TCH 50'.

RWY 31: MALSR. PAPI(P4L)—GA 3.0° TCH 50'. Thld displcd 500'.

RWY 05-23: H3000X75 (ASPH-PFC) S-50, D-75, 2S-95

PCN 3 F/B/Z/U MIRL

RWY 05: PAPI(P4R)—GA 3.0° TCH 31'. Tree.

RWY 23: PAPI(P4L)—GA 3.0° TCH 30'. Trees.

RUNWAY DECLARED DISTANCE INFORMATION

RWY 05: TORA-3000 TODA-3000 ASDA-3000 LDA-3000

RWY 13: TORA-7500 TODA-7500 ASDA-7000 LDA-7000

RWY 23: TORA-3000 TODA-3000 ASDA-3000 LDA-3000

RWY 31: TORA-7500 TODA-7500 ASDA-7500 LDA-7000

SERVICE: S4 FUEL 100LL, JET A 0X1 LGT Actvt MALSR Rwy 13 and 31—CTAF. PAPI 13 and 31; HIRL Rwy 13-31; MIRL Rwy 05-23 preset on low intst, to incr intst and actvt—CTAF.

AIRPORT REMARKS: Attended 1100-0530Z‡. Deer, migratory waterfowl and other wildlife on and invof arpt. Crop dusting operations on invof arpt during summer months. Line of sight visibility is restricted from the Rwy 13 and 23 approach and Rwy 13 and 05 approach. Helipad not visible from ATCT and approach surfaces. Class I, ARFF Index B. 24 hrs PPR for unscheduled air carrier ops with more than 30 passenger seats call arpt manager 320-255-7292. Flight training on and invof arpt. Rwy 05-23 not avbl for skedd acr ops with more than 9 psgr seats or unskd acr at least 31 psgr seats. Rwy 31 calm wind rwy. Rwy 13-31 200' blast pad each end.

AIRPORT MANAGER: 320-255-7292

WEATHER DATA SOURCES: ASOS 112.1 STC (320) 240-8781.

COMMUNICATIONS: CTAF 118.25 ATIS 119.375

RCO 122.5 (PRINCETON RADIO)

Ⓡ MINNEAPOLIS CENTER APP/DEP CON 121.05

TOWER 118.25 (1300-0500Z‡) GND CON 123.75

CLEARANCE DELIVERY PHONE: For CD when ATCT is clsd ctc FSS via rco, if una ctc Minneapolis ARTCC at 651-463-5588.

AIRSPACE: CLASS D svc 1300-0500Z‡; other times CLASS E.

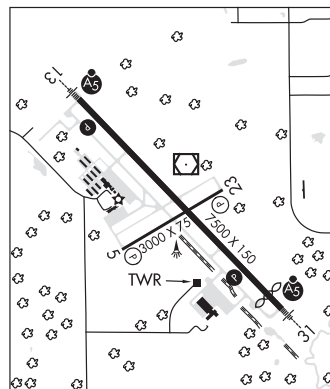
RADIO AIDS TO NAVIGATION: NOTAM FILE STC.

(T) (T) VORW/DME 112.1 STC Chan 58 N45°32.96' W94°03.52' at fld. 1023/3E. ASOS VOR unmonitored.

HUSSK NDB (LOMW) 342 ST N45°28.74' W93°58.12' 314° 5.6 NM to fld. 985/3E.

ILS 111.9 I-BPM Rwy 13. Class IB.

ILS 111.9 I-STC Rwy 31. Class IB. LOM HUSSK NDB.



TWIN CITIES

H-2J, L-14H

IAP, AD