

NORTH PLATTE RGNL/LEE BIRD FLD (LBF)(KLB) 3 E UTC-6(-5DT) N41°07.57' W100°41.02'

OMAHA

2777 B TPA—See Remarks ARFF Index—See Remarks NOTAM FILE LBF

H-5B, L-10H, 12G

RWY 12-30: H8001X150 (CONC-GRVD) S-75, D-110, 2S-139,

IAP, AD

2D-190 PCN 33 R/D/W/T HIRL

RWY 12: PAPI(P4L)—GA 3.0° TCH 55'.**RWY 30:** MALSR. PAPI(P4L)—GA 3.0° TCH 55'.**RWY 17-35:** H4436X100 (CONC) S-28, D-48, 2D-86

PCN 22 R/B/W/T MIRL

RWY 17: Road.**RWY 35:** REIL. VASI(V4L)—GA 3.0° TCH 36'. Thld displcd 301'. Tree.**RUNWAY DECLARED DISTANCE INFORMATION****RWY 12:** TORA-8000 TODA-8000 ASDA-8000 LDA-8000**RWY 17:** TORA-4436 TODA-4436 ASDA-4135 LDA-4135**RWY 30:** TORA-8000 TODA-8000 ASDA-8000 LDA-8000**RWY 35:** TORA-4436 TODA-4436 ASDA-4436 LDA-4135**SERVICE:** S4 FUEL 100LL, JET A, OX2, 3, 4 LGT ACTIVATE HIRL Rwy

12-30, MIRL Rwy 17-35, PAPI Rwy 12 and Rwy 30, VASI Rwy 35,

MALSR Rwy 30, REIL Rwy 35—CTAF.

AIRPORT REMARKS: Attended 1200-0500Z. Waterfowl on and invof the arpt. Class I, ARFF Index A. PPR 24 hrs for unscheduled air carrier ops with more than 30 passenger seats call arpt manager 308-530-6948, ARFF Index B equipment provided. All Category D acft (with speeds of 141-166 knots) operating on Rwy 12-30 must maintain a TPA of 1,500' when in the tfc pat.**AIRPORT MANAGER:** (308) 530-0607**WEATHER DATA SOURCES:** ASOS 118.425 (308) 534-1617.**COMMUNICATIONS:** CTAF/UNICOM 123.0

LEE BIRD RCO 122.5 (COLUMBUS RADIO)

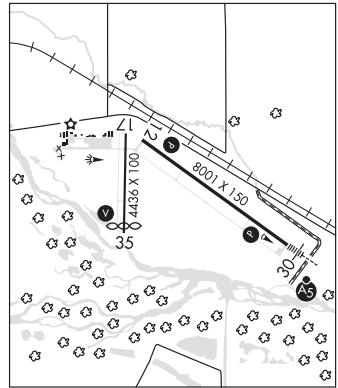
Ⓡ DENVER CENTER APP/DEP CON 132.7

CLEARANCE DELIVERY PHONE: For CD ctc Denver ARTCC on freq. If una, ctc FSS on freq via rco. If una, ctc Denver ARTCC at 303-651-4257.**AIRSPACE:** CLASS E.**RADIO AIDS TO NAVIGATION:** NOTAM FILE LBF.

(L) (L) VORW/DME 117.4 LBF Chan 121 N41°02.92' W100°44.83' 021° 5.5 NM to fld. 3069/11E.

PANBE NDB (LOMW) 416 LB N41°04.10' W100°34.35' 299° 6.1 NM to fld. 2724/6E.

ILS 111.5 I-LBF Rwy 30. Class IC. LOM PANBE NDB. LOM unmonitored.

**O'NEILL****THE O'NEILL MUNI—JOHN L BAKER FLD** (ONL)(KONL) 2 NW UTC-6(-5DT) N42°28.16' W98°41.27'

OMAHA

2034 B NOTAM FILE ONL

L-12H

RWY 13-31: H4408X75 (CONC) S-30 MIRL

IAP

RWY 13: REIL. PAPI(P2L)—GA 3.0° TCH 40'.**RWY 31:** REIL. PAPI(P2L)—GA 3.0° TCH 40'.**RWY 04-22:** H3200X60 (CONC)**RWY 22:** Tree.**SERVICE:** S4 FUEL 100LL, JET A+ LGT ACTIVATE REIL Rwy 13 and

Rwy 31; PAPI Rwy 13 and Rwy 31; MIRL Rwy 13-31—CTAF.

AIRPORT REMARKS: Attended continuously. Watch for large flocks of waterfowl during migration seasons (Feb & Oct). For aft hrs svc call 432-207-0742.**AIRPORT MANAGER:** 432-207-0742**WEATHER DATA SOURCES:** AWOS-3 121.125 (402) 336-4834.**COMMUNICATIONS:** CTAF/UNICOM 122.8

O'NEILL RCO 122.45 (COLUMBUS RADIO)

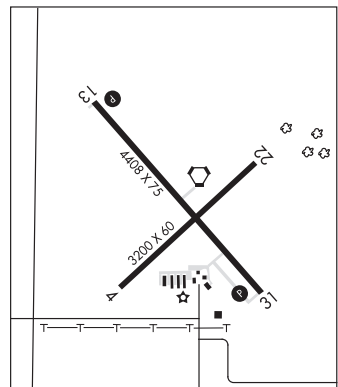
MINNEAPOLIS CENTER APP/DEP CON 128.0

CLEARANCE DELIVERY PHONE: For CD if una to ctc on FSS freq, ctc

Minneapolis ARTCC at 651-463-5588.

RADIO AIDS TO NAVIGATION: NOTAM FILE ONL.

O'NEILL (H) VORTACW 113.9 ONL Chan 86 N42°28.23' W98°41.22' at fld. 2028/10E.

**O'NEILL** N42°28.23' W98°41.22' NOTAM FILE ONL.

OMAHA

(H) (H) VORTACW 113.9 ONL Chan 86 at The O'Neill Muni—John L Baker Fld. 2028/10E.

H-5B, L-12H

RCO 122.45 (COLUMBUS RADIO)