

STERLING (3B3) 2 SW UTC-5(-4DT) N42°25.56' W71°47.57'
459 B NOTAM FILE BDR

NEW YORK
L-33C, 34J

RWY 16-34: H3086X40 (ASPH) S-8 LIRL(NSTD) 0.3% up N

RWY 16: Thld dsplcd 150'. Trees.

RWY 34: Thld dsplcd 500'. Tree.

SERVICE: S2 **FUEL** 100LL **LGT** ACTIVATE LIRL Rwy 16-34 and rotating bcn—CTAF.

AIRPORT REMARKS: Attended Thu-Sun 1300-2300Z†. Wildlife invof arpt. Glider ops in vicinity of arpt SR-SS daily. Intensive glider activity on weekends. Rwy 16-34 NSTD LIRL; first 190' Rwy 16 unlgtd; first 240' Rwy 34 unlgtd.

AIRPORT MANAGER: 978-422-8860

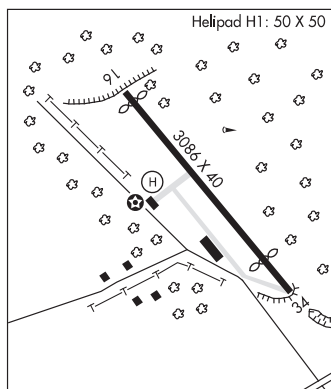
COMMUNICATIONS: CTAF 122.9

CLEARANCE DELIVERY PHONE: For CD ctc Yankee Apch at 860-386-3597

RADIO AIDS TO NAVIGATION: NOTAM FILE BDR.

GARDNER (L) VOR/DME 110.6 GDM Chan 43 N42°32.76'
W72°03.49' 135° 13.8 NM to fld. 1280/14W.

• • • • •
HELIPAD H1: H50X50 (ASPH)



STOGE N42°07.18' W71°07.71' NOTAM FILE OWD.
NDB (LOMW) 397 OW 350° 4.7 NM to Norwood Meml. 181/15W.

NEW YORK
L-33D, 34J

STOW

MINUTE MAN AIR FLD (6B6) 2 N UTC-5(-4DT) N42°27.62' W71°31.08'
280 B TPA—See Remarks NOTAM FILE BDR

NEW YORK
L-33C, 34J
IAP

RWY 03-21: H3110X48 (ASPH) S-12.5 LIRL

RWY 03: Hill.

RWY 21: REIL. PAPI(P2L)—GA 3.5° TCH 24'. Trees.

RWY 12-30: 1600X40 (TURF) 0.3% up NW

RWY 12: Trees.

RWY 30: Trees.

SERVICE: S4 **FUEL** 100LL **LGT** ACTVT REIL Rwy 21—CTAF.

NOISE: Noise abatement procedures in effect notify arpt manager 978-897-3933 of intention to opr between 0400-1100Z†.

AIRPORT REMARKS: Attended 1400-2100Z†. Before using Rwy 12-30 call arpt mgr to determine rwy conds. Tree obstruction in apch, primary and transition surfaces Rwy 03 and Rwy 12-30. TPA—for light acft 1032' AGL.

AIRPORT MANAGER: 978-897-3933

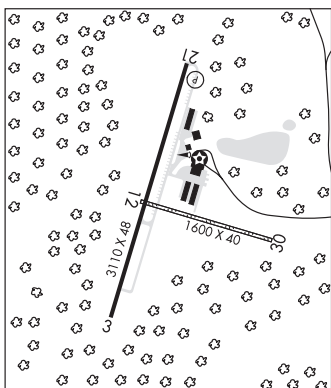
COMMUNICATIONS: CTAF/UNICOM 122.8

® **BOSTON APP/DEP CON** 124.4

CLEARANCE DELIVERY PHONE: For CD ctc Boston Apch at 603-594-5552.

RADIO AIDS TO NAVIGATION: NOTAM FILE MHT.

MANCHESTER (L) VOR/DME 114.4 MHT Chan 91 N42°52.11'
W71°22.17' 210° 25.3 NM to fld. 470/15W.



TANNER-HILLER (See BARRE/BARRE PLAINS on page 121)