

WINDSOR LOCKS

BRADLEY INTL (BDL)(KBDL) P (ANG ARNG) 3 W UTC-5(-4DT) N41°56.34'

NEW YORK

W72°41.06'

H-101, 11D, 12K, L-33C, 34I

173 B TPA—See Remarks LRA Class I, ARFF Index C NOTAM FILE BDL MON Airport

IAP, AD

RWY 06-24: H9847X150 (ASPH-GRVD) S-200, D-200, 2S-175,

2D-350, 2D/2D2-710 PCN 71 F/B/X/T HIRL CL

RWY 06: ALSF2. TDZL. REIL. PAPI(P4L)—GA 3.0° TCH 71'. RVR-TMR Trees.

RWY 24: MALS. TDZL. PAPI(P4L)—GA 3.0° TCH 71'. RVR-TMR Trees.

RWY 15-33: H6847X150 (ASPH-GRVD) S-200, D-200, 2S-175,

2D-350 PCN 64 F/A/X/T HIRL

RWY 15: REIL. PAPI(P4L)—GA 3.5° TCH 61'. RVR-R Trees.

RWY 33: MALS. PAPI(P4R)—GA 3.0° TCH 72'. RVR-T Trees.

LAND AND HOLD—SHORT OPERATIONS

| LDG RWY | HOLD—SHORT POINT | AVBL LDG DIST |
|---------|------------------|---------------|
| RWY 24 | 15-33 | 5850 |
| RWY 33 | 06-24 | 4550 |

RUNWAY DECLARED DISTANCE INFORMATION

RWY 06: TORA-9509 TODA-9509 ASDA-9509 LDA-9509

RWY 15: TORA-6847 TODA-6847 ASDA-6847 LDA-6847

RWY 24: TORA-9509 TODA-9509 ASDA-9509 LDA-9509

RWY 33: TORA-6847 TODA-6847 ASDA-6847 LDA-6847

SERVICE: S4 FUEL 100LL, JET A OX 1, 2, 3, 4 LGT Unmonitored when

afld clsd. Afld ops ltd to tenant acft when afld clsd. MILITARY—JASU (MD)-3 FUEL A+++(Mil) A, A+ (C860-627-3300.)

(NC-100LL) FLUID SP LOX OIL O-128-133-148 (Mil) SOAP

AIRPORT REMARKS: Attended continuously. Numerous birds freq on or invof arpt. No trng flts, no practice apchs, no touch and go ldrs btn Mon-Sat 0400-1200Z‡ and Sun 0400-1700Z‡. Twy J clsd btn S and R to acft with wing spans in excess of 170 ft. BASH Phase II increased bird activity Sep-Oct and Mar-Apr. Solar panel farm located 1.5 miles south of Rwy 33 thld. All acft overflight of solar farm will be at or above 500' AGL. Rwy 6 de-ice pad clsd to acft with wingspan 171' or grt exc with follow-me escort by arpt ops. Parl twy ops on Twy C and Twy B rstrd to acft with wingspans of 171 ft or less. Twy C btn Twy B and Twy H acft tax spd rstrn of 8 kts/10 mph max for acft with wingspan 214 ft or grt. ASDE-X in use. Operate transponders with altitude reporting mode and ADS-B (if equipped) enabled on all airport surfaces.

TPA—1873(1700) heavy acft. Fixed wing acft use low idle for taxi, no engine checks or power runs allowed on the Rwy 06-24 245 ft by 200 ft blast pad SW end. Rwy 15-33 100 ft by 200 ft blast pad SE end. Lgtd obst ant 36 ft AGL/205 ft MSL (Rwy 24 ILS/GS ANT) 162 ft NW of Twy C cntrn marking btn Twy B and Twy H. Twy S hold pad at Rwy 33 clsd. Ldg fee for business, corporate and revenue producing acft. Flight Notification Service (ADCUS) avbl.

AIRPORT MANAGER: 860-292-2003**WEATHER DATA SOURCES:** ASOS 118.15 (860) 386-3480. WSP.**COMMUNICATIONS:** D-ATIS 118.15 (860-386-3570) UNICOM 122.95

Ⓡ YANKEE APP/DEP CON 123.95 (061°-240°) 125.35 (241°-060°) 127.225

TOWER 120.3 GND CON 121.9 CLNC DEL 121.75

CPDLC (LOGON KUSA)

PDC

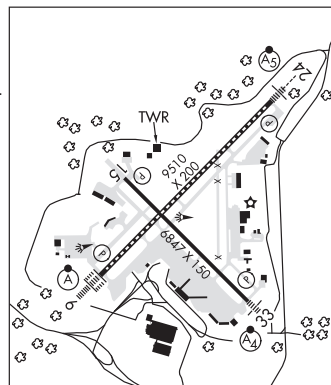
AIRSPACE: CLASS C svc ctc APP CON.**VOR TEST FACILITY (VOT)** 111.4**RADIO AIDS TO NAVIGATION:** NOTAM FILE HFD.**HARTFORD (L) (L) VOR/W/DME** 114.9 HFD Chan 96 N41°38.47' W72°32.85' 354° 18.9 NM to fld. 849/13W.

ILS/DME 111.1 I-BDL Chan 48 Rwy 06. Class IIIE.

ILS/DME 111.1 I-MYQ Chan 48 Rwy 24. Class IIE. DME unusable fm .4 NM inbd to Rwy 24.

ILS/DME 108.55 I-IKX Chan 22(Y) Rwy 33. Class IE.

ASR



WINDSOR LOCKS N41°56.37' W72°40.49'

NEW YORK

RCO (BRIDGEPORT RADIO)

L-33C, 34I

VALESVILLE HELIPORT (4C3) 2 N UTC-5(-4DT) N41°29.51' W72°48.67'

NEW YORK

65 B NOTAM FILE BDR

HELIPAD H1: H65X65 (CONC)

SERVICE: S4 FUEL 100LL, JET A LGT ACTIVATE rotating bcn—123.50.

HELIPORT REMARKS: Attended Mon-Fri 1330-2200Z‡. Helipad CLOSED indefinitely.

AIRPORT MANAGER: 800-234-3119

COMMUNICATIONS: CTAF/UNICOM 123.05