

HONOLULU

DANIEL K INOUE INTL (JOINT BASE PEARL HARBOR—HICKAM) (HNL)(PHNL) P (AF) 3 NW

HAWAIIAN ISLANDS

UTC-10 N21°19.07' W157°55.21'

P-1C, 2G

12.6 B TPA—See Remarks LRA Class I, ARFF Index E NOTAM FILE HNL

IAP, AD

RWY 08L—26R: H12312X150 (ASPH—GRVD) S-100, D-200, 2D-400, 2D/2D2-780 PCN 79 R/B/W/T HIRL

RWY 08L: MALS. PAPI(P4L)—GA 3.0° TCH 71'.

RWY 26R: REIL. PAPI(P4L)—GA 3.25° TCH 65'. Road.

RWY 08R—26L: H12000X200 (ASPH—GRVD) S-80, D-170, 2D-400, 2D/2D2-780 PCN 98 F/B/X/T HIRL

RWY 08R: REIL. PAPI(P4L)—GA 3.0° TCH 75'.

RWY 26L: MALS. PAPI(P4L)—GA 3.0° TCH 75'.

RWY 04R—22L: H9002X150 (ASPH—GRVD) S-100, D-200, 2D-400, 2D/2D2-850 PCN 57 F/B/X/T HIRL

RWY 04R: MALS. PAPI(P4L)—GA 3.0° TCH 71'. Tree.

RWY 22L: REIL. PAPI(P4L)—GA 3.44° TCH 80'. Stack.

RWY 04L—22R: H6955X150 (ASPH) S-100, D-200, 2D-400, 2D/2D2-850 PCN 31 F/B/X/T HIRL

RWY 04L: REIL. PAPI(P4L)—GA 3.0° TCH 50'.

RWY 22R: REIL. Antenna.

LAND AND HOLD—SHORT OPERATIONS

LDG RWY	HOLD—SHORT POINT	AVBL LDG DIST
RWY 04L	08L-26R	3700
RWY 04R	08L-26R	6250
RWY 08L	04L-22R	9300

RUNWAY DECLARED DISTANCE INFORMATION

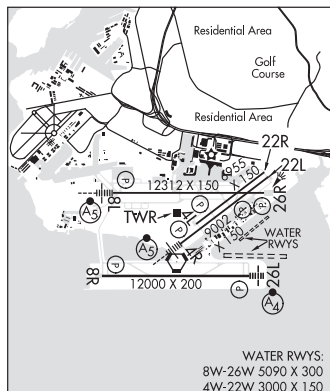
RWY 04L:	TORA-6952	TODA-6952	ASDA-6952	LDA-6952
RWY 04R:	TORA-9000	TODA-9000	ASDA-8950	LDA-8950
RWY 08L:	TORA-12312	TODA-12312	ASDA-12312	LDA-12312
RWY 08R:	TORA-12000	TODA-12000	ASDA-12000	LDA-12000
RWY 22L:	TORA-9000	TODA-9000	ASDA-8937	LDA-8937
RWY 22R:	TORA-6952	TODA-6952	ASDA-6952	LDA-6952
RWY 26L:	TORA-12000	TODA-12000	ASDA-12000	LDA-12000
RWY 26R:	TORA-12300	TODA-12300	ASDA-12300	LDA-12300

ARRESTING GEAR/SYSTEMS

RWY 04R BAK-14 BAK-12B (1500')

BAK-14 BAK 12B(B) (1500') **RWY 26L**

SERVICE: S4 **FUEL** 100, JET A, A1+ **OX** 1, 2, 3, 4 **LGT** Rwy 22L PAPI unusable byd 2 NM. Rwy 26L PAPI aligned 05° left of rwy centerline, Rwy 26L PAPI unusable byd 05° right of rwy centerline. Rwy 26R PAPI unusable byd 1.5 NM from thld. **MILITARY**—**FUEL** A++ (Mil); avbl H24) **A-GEAR** Hook MB100(B) lctd 200' from thld Rwy 26R. Rwy 04R—22L and Rwy 08R—26L sfc grvd within 10' of A-G system. Potential for fighter acct tail hook skip exists. **TRAN ALERT** 15 WG can provide eqpt but crews must provide own pers when needed.



WATER RWYS:
8W-26W 5090 X 300
4W-22W 3000 X 150

HOOK MB 60 (200') → **RWY 26R**

CONTINUED ON NEXT PAGE

CONTINUED FROM PRECEDING PAGE

AIRPORT REMARKS: Attended continuously. 100 octane fuel avbl thru FBO. Bird strike hazard all runways. ASDE-X in use. Opr transponders with altitude reporting mode and ADS-B (if equipped) enabled on all airport surfaces. Due to location of twr, controllers unable to determine whether acct are on correct final apch to Rwy 04L, Rwy 04R, Rwy 22L and Rwy 22R. Due to non-visibility twr una to dtm if the flwg areas are clear of obstns and/or tfc: ptns of Twy J btn Twy B and Rwy 08R; ptns of Inter-Island acct prkg ramp. Rwy 08L-26R 200' wide with lgts outside, pvmt striped 150' wide. TPA—Tfc pattern altitude for small acct entering from northwest 800(787). Tfc pattern altitude for small acct entering from south 1000(987). Tfc pattern altitude for large acct entering from south 1500(1487). During periods of repeated precipitation anticipate wet rwy conditions, if current conditions rqr confirmation ctc Honolulu twr on initial ctc. Remain at least 1 mile offshore of Waikiki Diamond Head Koko Head and EWA Beach. Arrival Rwy 08L, fly ILS apch procedure or a close-in base leg remaining over center of Pearl Harbor Channel. Arrival Rwy 26L and Rwy 26R, remain at tfc pattern altitudes as long as possible before beginning descent for lgd. Twy G ADG V and below power in w/PPR. Tower approval required to use Taxiway Kilo from Runway 4R. Apron Taxilane 6 btn Twy C and south ramp clsd except GA/fixd wing loading/unloading only. Apron Taxilane 2 east end 360' clsd. Rwy 04R and Rwy 08R wind cones in nonstandard lctn. All jet acct ctc ramp control prior to engine start at gate or hard stand. PPR from arpt manager for transportation of Class A and B explosives in and out of HNL. LRA: 2 hrs advance notice rqr outside regular business hrs. Ldg fee and storage charges collectable on arrival. NOTE: See Area Notices. NOTE: See General Notices—GENERAL INFORMATION ON FLYING TO HAWAII. NOTE: See Special Notices—Tower Data Link System. NOTE: See Special Notices—HNL Runway Incursion Risk. NOTE: See Special Notices—Arrival Alert.

MILITARY REMARKS: See FLIP AP/3 Supplementary arpt information, route and area rstd, and Oakland FIR fit haz. All acct inbd to Hickam should address fit plan to PHIKYXYX. All military acct with VIP code 7 or avb ctc 15WG command post or relay thru HF/SSB airway 1 hour out to confirm blocktime. All units planning to stage ops from JBPH-H must contact 15 WG/XP (315) 449-1591 at least 60 days prior to arrival. **ANG** HI ANG afld ops opr 1500-0300Z Mon-Fri and UTA wkends, clsd Sat, Sun and hol. **RSTD** JBPH-H is PPR to all non-TFWC msn, amc trng msn and KC-135 8 un & 8 en msn call 735th moc at DSN (315) 499-6970 for PPR. All amc PPR will be coord Mon-Fri 1700-0400Z only. All non-amc acct such as foreign, sister svc, tran acct or KC-135 and, QDN, QEN, PEN, KEN, CJJ, DV1, DV7, DC5, and C-130 msn must ctc 15 OSS/OSA (AMOPS) at DSN (315) 449-0046 for PPR. All PPR will be apvd no earlier than 72 hr but no later than 24 hr prior. All tran acct not on an AMC/TWCF msn and home stn acct terminating at JBPH-H, will provide a 3 hr out call (comm 808-448-6900) as well as a 20-30 min out call on 292.5 to the 15 WG/CP (KOA CONTROL). Upon arrival, crews will proceed directly to command post (bldg 2050) and complete an outbound setup sheet to facilitate departure requirements. Mil acct opr during Bird Watch Entering MODERATE (initial tkof or full stop lgd only, no multiple IFR/VFR approaches) and SEVERE (tkof and lgd prohibited w/o 15 OG/CC approval or 154 OG/CC approval for HIANG acct) ctc HIK ramp, PTD, 15 WG command post, 735 AMC command post, 154 WG command post for current conditions. Twr aplv rqr to use Twy Kilo from Rwy 04R. Twy R Hold-Short apch zone Rwy 04L/R at hold line. Twy P clsd to acct over 12500 lbs. **CAUTION** No fighter transient support available in accordance with ACC LSET Flash Safety 06-02. Transient fighter units should provide their own maintenance support. Foreign object damage hazard exists on all movement areas east of Twy S. FOD hazard exists on all twys and rwys, but especially on Rwy 04L-22R and twys north of Rwy 08L-26R. Fighter acct exercise extreme caution when taxiing. To minimize foreign object damage potential, all acct should use minimum thrust, especially outboard engines, when taxiing past the F-22 alert facility on Twy T. Hickam ramp taxi instr NOT valid within PHNL Airport Operating Area (AOA) which includes Twys A, B, portions of Twys V (south of Twy A) and T, and all rwys. Aircrews must ctc HNL twr or HNL gnd as drct prior to entering or while within the PHNL AOA. Hickam ramp will instr all acct at the Haz cargo pad adj to Twy B, Twys A1-A4, B1-B4 and PHIK ramp side portions of Twy T and V (North of Twy A). **TFC PAT** Overhead tfc pat alt 2000' rstd to 154 WG (HIANG) and 15 Wing Ftr/C17 and Sentry Aloha acct **CSTMS/AG/IMG** All military acct rqr Customs/Agriculture/Immigration inspection must ctc 15 WG command post or if Air Mobility Command ctc Hickam AMCC, no later than 3 hrs prior to arrival with departure location, estimated block time, number of aircrew, Civilian/Military Passengers/Foreign Nationals/and Distinguished Visitor codes. **MISC** Afld ops DSN 449-0046/0048 Fax DSN 449-7624. Wx opr H24, DSN 449-2251, C808-658-9961. Remote flt wx briefings ctc 17th Wx Sq H24, DSN (315) 449-7950/8333, FAX DSN (315) 449-8336; 2 hr prior notice rqr for timely brief. Official obsn taken by FAA. Cooperative wx watch procedures do not exist between Wx and ATC. No COMSEC material avbl thru Hickam Airfield Ops. Due to sensitivities of citizens, fighter aircraft dep only authorized from Mon-Sat 1700-0700Z, and Sun and holidays 1800-0700Z. All request for waivers will be sent to the 15/OG/CC or 154 OG/CC for HIANG aircraft at least 5 working days in advance. Waivers will be granted on extreme necessity. If short notice mission essential waivers are necessary, ctc 15OG/CC by phone thru 15 WG Comd Post (15 WG/CP) or 154 OG/CC for HI ANG aircraft. 15 WG Comd Post will pass approval to Hickam flight svc and Hickam ramp advisory. **COMM** Bedtime (All Coronet W tankers use 311.0 for tanker-fighter inter-plane on launch day. After duty hr DSN 448-8888 613AOC/AMD, Fit Management.

CONTINUED ON NEXT PAGE

AIRPORT/FACILITY DIRECTORY

CONTINUED FROM PRECEDING PAGE

AIRPORT MANAGER: 808-836-6533

WEATHER DATA SOURCES: ASOS (808) 836-0449 WSP.

COMMUNICATIONS: D-ATIS 127.9 251.15 PTD 133.6 (HICKAM)

Ⓡ **HONOLULU CONTROL FACILITY APP CON** 118.3 (West)

TOWER 118.1 123.9 (08R-26L) 257.8 273.575 (08R-26L) **GND CON** 121.9

ADVISORY RAMP 121.8 (HNL INTL) 133.6 254.4 (HICKAM) **CLNC DEL** 121.4

Ⓡ **HONOLULU CONTROL FACILITY DEP CON** 118.3 (West) 124.8 (East)

PDC

COMD POST 168.0 292.5 295.5 **SHAKA OPS** 125.3 349.4

AIRSPACE: CLASS B See VFR Terminal Area Chart CLASS E svc Honolulu Intl arpt.

VOR TEST FACILITY (VOT) 111.0

RADIO AIDS TO NAVIGATION: NOTAM FILE HNL.

HONOLULU (H) VORTAC 114.8 HNL Chan 95 N21°18.50' W157°55.82' at fld. 5/11E.

TACAN AZIMUTH & DME unusable:

055°-085° byd 15 NM blo 7,000'

251°-260° byd 20 NM blo 2,200'

261°-280° byd 20 NM blo 3,000'

281°-305° byd 20 NM blo 7,500'

306°-330° byd 30 NM blo 7,500'

331°-340° byd 32 NM blo 5,500'

360°-055° byd 15 NM blo 6,000'

360°-085° byd 25 NM blo 8,000'

360°-085° byd 30 NM blo 12,000'

VOR unusable:

055°-085° byd 15 NM blo 7,000'

100°-115° byd 30 NM blo 4,000'

120°-140° byd 35 NM blo 5,000'

170°-210° byd 20 NM blo 3,000'

240°-250° byd 30 NM blo 3,000'

241°-250° byd 35 NM blo 4,000'

251°-260° byd 20 NM blo 2,200'

261°-280° byd 20 NM blo 3,000'

281°-305° byd 20 NM blo 7,500'

306°-330° byd 30 NM blo 7,500'

331°-340° byd 32 NM blo 5,500'

351°-359° byd 25 NM blo 7,500'

360°-055° byd 15 NM blo 6,000'

360°-085° byd 25 NM blo 8,000'

360°-085° byd 30 NM blo 12,000'

KOKO HEAD (H) VORTACW 113.9 CKH Chan 86 N21°15.91' W157°42.18' 274° 12.6 NM to fld. 640/11E.

VOR unusable:

285°-294° byd 27 NM blo 8,000'

295°-000° byd 21 NM blo 5,500'

295°-000° byd 32 NM blo 8,000'

TACAN AZM/DME unusable:

285°-294° byd 20.5 NM blo 5,000'

285°-294° byd 27 NM blo 8,000'

295°-000° byd 19 NM blo 5,500'

295°-000° byd 26 NM blo 8,000'

295°-000° byd 32 NM

EWABE NDB (MHW/LOM) 242 HN N21°19.48' W158°02.94' 082° 7.2 NM to fld. 43/11E.

ILS/DME 110.5 I-IUM Chan 42 Rwy 04R. Class IE.

ILS/DME 111.7 I-HNL Chan 54 Rwy 08L. Class IE. LOM EWABE NDB. Excessive oscillation over mnts ne of LOM.

LDA/DME 109.1 I-EPC Chan 28 Rwy 26L. LOC unusable byd 25 degrees north of centerline due to terrain.

ASR

COMM/NAV/WEATHER REMARKS: San Francisco Radio, see Associated Data. Excessive needle oscillation can be expected over mountainous terrain NE of NDB—CAUTION advised. Hickam ramp twr (Non-ATC facility) All acft on HIK flightline including haz cargo pad will ctc HIK Ramp prior to eng start/taxi. HIK Ramp will provide advisory directions and will relay to AFLD Ops via VHF capable acft. All acft departing to CONUS must complete USDA inspection prior to eng start/taxi. Rwys 4R and 8R wind cones in nonstandard lctn.

WATERWAY 08W-26W: 5090X300 (WATER)

WATERWAY 04W-22W: 3000X150 (WATER)

SEAPLANE REMARKS: Rwy 04W-22W and Rwy 08W-26W recreational boating activities on and invof waterways.