

**MISSISSIPPI CANYON 650** DSF N28°20.56' W88°15.89'/130  
AWOS-3 119.925 (985) 773-7295 Winds unrel.

NEW ORLEANS  
L-21C, GOMC

**MISSISSIPPI CANYON 724** GLX N28°14.08' W88°59.06'/104  
AWOS-3 118.225 (713) 357-3575

NEW ORLEANS  
L-21C, GOMC

**MISSISSIPPI CANYON BLK 807** CYD N28°10.17' W89°13.37'/151  
AWOS-3 119.025 (504) 425-1521

NEW ORLEANS  
L-21C, GOMC

**MONROE RGNL** (MLU)(KMLU) 3 E UTC-6(-5DT) N32°30.63' W92°02.17'

MEMPHIS  
H-6J, L-18F  
IAP, AD

79 B Class I, ARFF Index B NOTAM FILE MLU

**RWY 04-22:** H7504X150 (ASPH-GRVD) S-75, D-170, 2S-175,  
2D-290 PCN 111F/D/X/T HIRL

**RWY 04:** MALSR. PAPI(P4L)—GA 3.0° TCH 50'. RVR-T

**RWY 22:** MALSR. PAPI(P4L)—GA 3.0° TCH 50'. RVR-R

**RWY 14-32:** H6301X150 (ASPH) S-75, D-170, 2S-175, 2D-290  
PCN 32 R/C/X/T MIRL

**RWY 14:** REIL. PAPI(P4L)—GA 3.0° TCH 50'.

**RWY 32:** REIL. PAPI(P4L)—GA 3.0° TCH 53'.

**RUNWAY DECLARED DISTANCE INFORMATION**

**RWY 04:** TORA-7504 TODA-7504 ASDA-7504 LDA-7504

**RWY 14:** TORA-6301 TODA-6301 ASDA-6301 LDA-6301

**RWY 22:** TORA-7504 TODA-7504 ASDA-7504 LDA-7504

**RWY 32:** TORA-6301 TODA-6301 ASDA-6301 LDA-6301

**SERVICE:** S4 **FUEL** 100LL, **JET A** **OX 1** **LGT** When twr closed **ACTIVATE**  
MALSR Rwy 04 and Rwy 22; HIRL Rwy 04-22; MIRL Rwy 14-32,  
Twy lgts—CTAF. PAPI Rwy 04, Rwy 22, Rwy 14 and Rwy 32 operate  
continuously.

**AIRPORT REMARKS:** Attended continuously. Twys J and E east of Rwy 04-22  
not avbl for air carrier ops with over 9 passenger seats. Bird activity on  
and invof arpt. SW 6000' grnd ASPH. Taxiway E clsd to aircraft with  
wing span over 90' East of Rwy 04-22.

**AIRPORT MANAGER:** 318-329-2460

**WEATHER DATA SOURCES:** ASOS (318) 327-5675 LLWAS.

**COMMUNICATIONS:** CTAF 118.9 ATIS 125.05 **UNICOM** 122.95

RCD 122.25 (DE RIDDER RADIO)

Ⓡ **APP/DEP CON** 118.15 (Within 20 NM blw 4000') 126.9 (1200-0400Z‡)

Ⓡ **FORT WORTH CENTER APP/DEP CON** 126.325 (0400-1200Z‡)

**TOWER** 118.9 (1200-0400Z‡) **GND CON** 121.9 **CLNC DEL** 121.65

**CLEARANCE DELIVERY PHONE:** For CD when ATCT is clsd ctc Fort Worth ARTCC at 817-858-7584

**AIRSPACE:** CLASS D svc 1200-0400Z‡; other times CLASS E.

TRSA svc ctc **APP CON** within 25 NM below 7000

**RADIO AIDS TO NAVIGATION:** NOTAM FILE MLU.

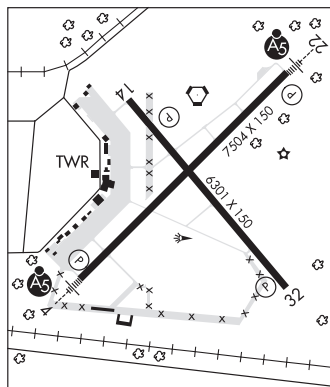
(L) (L) **VORTACW** 117.2 MLU Chan 119 N32°31.01' W92°02.16' at fld. 76/3E.

**SABAR NDB (LOMW)** 392 ML N32°27.25' W92°06.26' 043° 4.8 NM to fld. 75/3E.

ILS 109.5 I-MLU Rwy 04. Class IB. LOM SABAR NDB. ILS and LOM unmonitored when ATCT clsd.

ILS 109.5 I-MZR Rwy 22. Class IT. Unmonitored when ATCT clsd. LOC unusable byd 20° right of course.

ASR (1200-0400Z‡)



**MOREHOUSE MEML** (See BASTROP on page 85)

**MOSSY** N30°18.40' W93°11.77' NOTAM FILE CWF.  
NDB (LOMW) 418 CW 150° 6.4 NM to Chennault Intl. 23/4E.

HOUSTON