

DALLAS EXEC (RBD)(KRBD) 6 SW UTC-6(-5DT) N32°40.88' W96°52.13'

661 B NOTAM FILE RBD

RWY 13-31: H7136X100 (CONC-GRVD) S-40, D-90, 2D-130 MIRL**RWY 13:** REIL. PAPI(P4L)—GA 3.0° TCH 40'. Thld dspcd 1085'.**RWY 31:** REIL. PAPI(P4R)—GA 3.0° TCH 45'. Thld dspcd 500'. Road.**RWY 17-35:** H3800X150 (CONC) S-35, D-60, 2D-110 MIRL**RWY 17:** REIL. PAPI(P4R)—GA 3.0° TCH 43'.**RWY 35:** REIL.**RUNWAY DECLARED DISTANCE INFORMATION****RWY 13:** TORA-6766 TODA-7136 ASDA-6622 LDA-5537**RWY 31:** TORA-6051 TODA-7136 ASDA-7101 LDA-6601**SERVICE:** S4 FUEL 100LL, JET A OX 1, 2 LGT When ATCT clsd ACTVT
PAPI Rwy 13 and 17—CTAF. MIRL Rwy 13-31; Rwy 17-35 preset
low intst; to incr intst ACTVT—CTAF.**AIRPORT REMARKS:** Attended 1200-0200Z†. On call aft hrs. Fuel, 100LL
avbl 24 hr with major credit card. Birds on and invof arpt.**AIRPORT MANAGER:** 214-670-1296**WEATHER DATA SOURCES:** ASOS (214) 330-5317 LAWRS.**COMMUNICATIONS:** CTAF 127.25 ATIS 126.35 UNICOM 122.95

Ⓡ REGIONAL APP/DEP CON 125.2

EXECUTIVE TOWER 127.25 (1300-0300Z†) **GND CON** 119.475 **CLNC**
DEL 118.625**AIRSPACE:** CLASS D svc 1300-0300Z†; other times CLASS G.**RADIO AIDS TO NAVIGATION:** NOTAM FILE FTW.**MAVERICK (H) (H) VORW/DME** 113.1 TTT Chan 78 N32°52.15' W97°02.43' 136° 14.2 NM to fld. 536/6E.

All acft arriving DFW are requested to turn DME off until departure due to traffic overload of Maverick DME

DME unusable:

180°-190° byd 10 NM

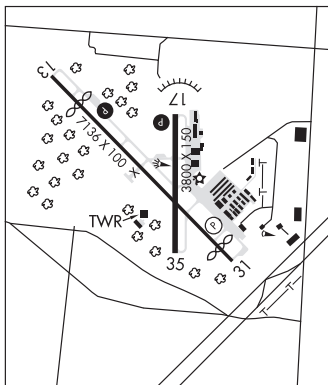
ILS/DME 110.75 I-RBD Chan 44(Y) Rwy 31. Class IE. Unmonitored when ATCT closed.

DALLAS-FT WORTH

COPTER

H-6H, L-17C, A

IAP, AD

**DALLAS LOVE FLD** (DAL)(KDAL) 5 NW UTC-6(-5DT) N32°50.76' W96°51.05'

487 B LRA Class I, ARFF Index C NOTAM FILE DAL

RWY 13R-31L: H8800X150 (CONC-GRVD) S-100, D-200, 2S-175,

2D-350 PCN 68 R/B/W/T HIRL CL

RWY 13R: PAPI(P4R)—GA 3.0° TCH 52'. RVR-TM Thld dspcd 489'.

Rgt tfc.

RWY 31L: MALSR. TDZL. PAPI(P4L)—GA 3.08° TCH 55'. RVR-TM
Bldg.**RWY 13L-31R:** H7752X150 (CONC-GRVD) S-100, D-200, 2S-175,

2D-350 PCN 46 R/C/W/T HIRL CL

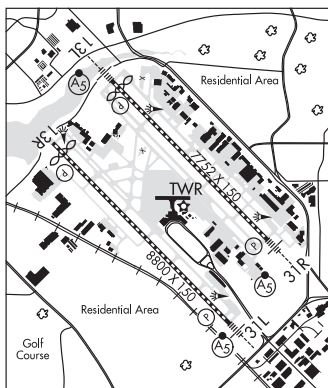
RWY 13L: MALSR. TDZL. PAPI(P4R)—GA 3.0° TCH 57'. RVR-TR Thld
dspcd 399'.**RWY 31R:** MALSR. PAPI(P4L)—GA 3.0° TCH 55'. RVR-TR Pole. Rgt
tfc.**RUNWAY DECLARED DISTANCE INFORMATION****RWY 13L:** TORA-7752 TODA-7752 ASDA-7752 LDA-7352**RWY 13R:** TORA-8800 TODA-8800 ASDA-8800 LDA-8310**RWY 31L:** TORA-8800 TODA-8800 ASDA-8000 LDA-8000**RWY 31R:** TORA-7752 TODA-7752 ASDA-6952 LDA-6952**SERVICE:** S4 FUEL 100LL, JET A OX 1, 2, 3, 4**NOISE:** Noise sensitive areas all quadrants; noise abatement procedures
in effect jet and acft over 12,500 lbs use Rwy 13R-31L between
0300-1200Z†. For information call 214-670-5683.**AIRPORT REMARKS:** Attended continuously. Birds on and invof arpt. Bird activity Trinity River bottom 3 miles SW side. PAEW
on arpt. Pvt pilot certificate or better rprd to tkf or land. No student solo flts permitted. Twy K clsd thru tfc. K runup pad
clsd 1800-0600Z†. Acft using K runup pad btn 1200-0600Z† must obtain avpl fm arpt opns cntr 214-670-5683 prior
to entering. Twy all clsd to design group IV, V, VI acft exc 1 hr PPR 214-288-3069. Flight Notification Service (ADCUS)
available. User fee arpt. Ldg fee arpt.

DALLAS-FT WORTH

COPTER

H-6H, L-17C, A

IAP, AD



CONTINUED ON NEXT PAGE

CONTINUED FROM PRECEDING PAGE

AIRPORT MANAGER: 214-670-6073

WEATHER DATA SOURCES: ASOS (214) 353-1551 TDWR.

COMMUNICATIONS: D-ATIS 120.15 (214) 358-5355

DALLAS RCO 122.3 (FORT WORTH RADIO)

Ⓡ RGNL APP CON 124.3 (North) 125.2 (South)

LOVE TOWER 123.7 GND CON 121.75 CLNC DEL 127.9

Ⓡ RGNL DEP CON 118.55 (East) 125.125 (South) 118.55 125.125 (Turbojets) 125.2 (South Props) 124.3 (North Props)
CPDLC (LOGON KUSA)

PDC

AIRSPACE: CLASS B See VFR Terminal Area Chart.

VOR TEST FACILITY (VOT) 113.3

RADIO AIDS TO NAVIGATION: NOTAM FILE FTW.

COWBOY (H) (H) VORW/DME 116.2 CVE Chan 109 N32°53.42' W96°54.24' 129° 3.8 NM to fld. 443/6E.

ILS/DME 111.5 I-DAL Chan 52 Rwy 13L. Class IIE. DME also serves Rwy 31R. DME unusable wi 1.3 NM fm thr; byd 30° left of course.

ILS/DME 111.1 I-DPX Chan 48 Rwy 13R. Class IE. DME also serves Rwy 31L.

ILS/DME 111.1 I-LVF Chan 48 Rwy 31L. Class IA. DME also serves Rwy 13R. LOC unusable byd 18° right of course.

ILS/DME 111.5 I-OWW Chan 52 Rwy 31R. Class IIE. DME also serves Rwy 13L.

MCKINNEY NTL (TKI)(KTKI) 32 N UTC-6(-5DT) N33°10.62' W96°35.33'

589 B NOTAM FILE TKI

RWY 18-36: H7002X150 (CONC) S-75, D-150, 2D-450 HIRL

RWY 18: MALSR. PAPI(P4L)—GA 3.0° TCH 50'.

RWY 36: MALS. PAPI(P4L)—GA 3.0° TCH 50'. Rgt ttc.

SERVICE: S4 FUEL 100LL, JET A1+ OX 3 LGT When ATCT clsd actvt
MALSR Rwy 18; MALS Rwy 36; PAPI Rwy 18 and 36; HIRL Rwy 18-36—CTAF.

AIRPORT REMARKS: Attended 1200-0400Z†. Bird activity invof arpt. NOTE:
See Special Notices—Arrival Alert.

AIRPORT MANAGER: (972) 562-4053

WEATHER DATA SOURCES: ASOS (972) 548-8525

COMMUNICATIONS: CTAF 118.825 UNICOM 122.95

Ⓡ REGIONAL APP/DEP CON 124.3

TOWER 118.825 (1200-0400Z†) GND CON 121.875 CLNC DEL 121.35
(when twr clsd)

AIRSPACE: CLASS D svc 1200-0400Z†; other times CLASS G.

RADIO AIDS TO NAVIGATION: NOTAM FILE FTW.

COWBOY (H) (H) VORW/DME 116.2 CVE Chan 109 N32°53.42'
W96°54.24' 037° 23.4 NM to fld. 443/6E.

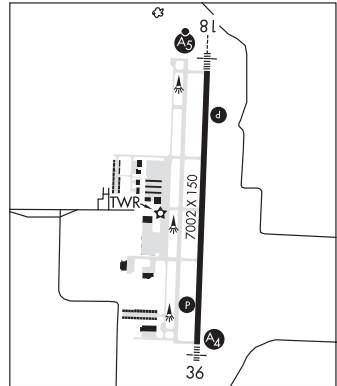
ILS/DME 109.35 I-EFE Chan 30(Y) Rwy 18. Unmonitored when
ATCT clsd.

DALLAS-FT WORTH

COPTER

H-6H, L-17C, A

IAP, AD



DALLAS SOUTH PORT (See PALMER on page 373)