

MAVERICK N32°52.15' W97°02.43' NOTAM FILE FTW.

DALLAS—FT. WORTH

(H) (H) VORW/DME 113.1 TTT Chan 78 359° 1.7 NM to Dallas—Fort Worth Intl. 536/6E.

COPTER

all acft arriving dfw are requested to turn DME off until departure due to traffic overload of maverick DME

H—6H, L—17C, A

DME unusable:

180°–190° byd 10 NM

MC ALLEN MILLER INTL (MFE)(KMFE) 2 S UTC–6(–5DT) N26°10.55' W98°14.32'

BROWNSVILLE

107 B AOE LRA Class I, ARFF Index C NOTAM FILE MFE

H—7B, L—20H

RWY 14–32: H7120X150 (ASP—GRVD) S–90, D–190, 2D–280

IAP, AD

PCN 285F/A/X/T HIRL

RWY 14: MALSR. Thld displcd 137'. Road.

RWY 32: REIL. VASI(V2L)—GA 3.0° TCH 53'.

RWY 18–36: H2639X60 (ASP) S–12.5 PCN 103F/A/X/T MIRL 0.3% up N

RWY 18: PAPI(P2L)—GA 4.0° TCH 35'. Pole.

RUNWAY DECLARED DISTANCE INFORMATION

RWY 14: TORA–7120 TODA–7120 ASDA–7120 LDA–6983

RWY 18: TORA–2638 TODA–2638 ASDA–2638 LDA–2638

RWY 32: TORA–7120 TODA–7120 ASDA–7120 LDA–7120

RWY 36: TORA–2638 TODA–2638 ASDA–2638 LDA–2638

SERVICE: S4 FUEL 100LL, JET A OX3 LGT When ATCT clsd actvt MALSR Rwy 14; HIRL Rwy 14–32; MIRL Rwy 18–36—CTAF. PAPI Rwy 18 OTS indefinitely.

NOISE: Jet or large propeller acft training prohibited (including practice apchs; touch and go landings and practice instrument apch procedures) due to noise abatement procedures effective 0500–1200Z†. When departing arpt fly rwy heading until reaching 1000' AGL before making procedure turn.

AIRPORT REMARKS: Attended 1200–0400Z†. For svcs after hrs call 956–686–1774. Birds on and in/vof airport (seasonal). For ARFF when ATCT clsd ctc: Mc Allen arpt ops 956–681–1500. No 180° locked wheel turns on Rwy 14–32. Rwy 18–36 not avbl for acr opns. Twy C btn Twy C2 and the apch end of Rwy 18 not vsb fm ATCT. No acft eng run-ups on trml aprn.

AIRPORT MANAGER: 956-681-1500

WEATHER DATA SOURCES: ASOS (956) 664–8212

COMMUNICATIONS: CTAF 118.5 ATIS 128.5 UNICOM 122.95

RCO 122.2 (SAN ANGELO RADIO)

® VALLEY APP/DEP CON 121.0

TOWER 118.5 (1200–0600Z†) GND CON 121.8

CLEARANCE DELIVERY PHONE: For CD when ATCT is clsd ctc crp Apch at 361-299-4230.

AIRSPACE: CLASS D svc 1200–0600Z†; other times CLASS E.

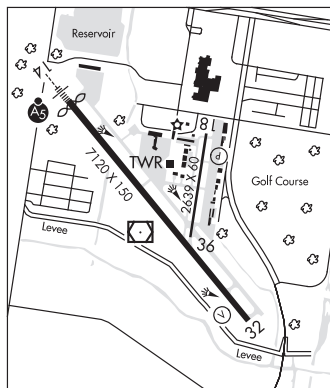
RADIO AIDS TO NAVIGATION: NOTAM FILE MFE.

(H) (H) VORW/DME 117.2 MFE Chan 119 N26°10.43' W98°14.45' at fld. 95/9E.

MISSI NDB (LOMW) 330 MF N26°15.23' W98°18.63' 136° 6.1 NM to fld. 160/4E.

ILS/DME 111.7 I–MFE Chan 54 Rwy 14. Class IE. LOM MISSI NDB. Unmonitored. DME also shared with Rwy 32.

ILS/DME 111.7 I–LLM Chan 54 Rwy 32. Class IE. DME also shared with Rwy 14.

**MC CAMEY**

UPTON CO (E48) 1 SW UTC–6(–5DT) N31°07.51' W102°13.52'

SAN ANTONIO

2433 B NOTAM FILE SJT

L–19A

RWY 10–28: H4100X75 (ASP) S–30 MIRL

RWY 10: PAPI(P2L). P–line. Rgt tfc.

RWY 28: PAPI(P2L). Trees.

SERVICE: LGT MIRL Rwy 10–28 preset to low, to incr intst—CTAF.

AIRPORT REMARKS: Unattended.

AIRPORT MANAGER: 432-413-8589

COMMUNICATIONS: CTAF 122.9

CLEARANCE DELIVERY PHONE: For CD ctc Albuquerque ARTCC at 505-856-4861.

RADIO AIDS TO NAVIGATION: NOTAM FILE FST.

FORT STOCKTON (H) (H) VORTACW 116.9 FST Chan 116 N30°57.13' W102°58.54' 064° 40.0 NM to fld. 2893/11E.

VOR unusable:

020°–055° byd 20 NM blo 6,900'

070°–086° byd 35 NM blo 6,400'

106°–132° byd 30 NM blo 5,900'

315°–330° byd 30 NM blo 5,400'