

NAVASOTA N30°17.31' W96°03.49' NOTAM FILE CXO.

HOUSTON

(H) (H) VORW/DME 115.9 TNV Chan 106 321° 5.5 NM to Navasota Muni. 247/8E.

H-7C, L-19D, 21A, GOMW

DME unusable:

005°-072° byd 18 NM blo 3,000'

073°-077° byd 18 NM blo 2,000'

078°-106° byd 18 NM blo 3,000'

VOR portion unusable:

000°-073° byd 18 NM blo 3,000'

074°-077° byd 18 NM blo 2,000'

078°-085° byd 18 NM blo 3,000'

086°-145° byd 18 NM blo 6,000'

086°-145° byd 35 NM

146°-359° byd 18 NM blo 2,000'

261°-271° byd 39 NM blo 5,000'

NEW BRAUNFELS NTL (BAZ)(KBAZ) 4 E UTC-6(-5DT) N29°42.35' W98°02.59'

SAN ANTONIO

658 B NOTAM FILE BAZ

H-7B, L-19C

RWY 13-31: H6503X100 (ASPH) S-30, D-60 MIRL

IAP, AD

RWY 13: MALS. REIL. PAPI(P4L)—GA 3.0° TCH 50'.

RWY 31: PAPI(P4L)—GA 3.0° TCH 50'. Tree.

RWY 17-35: H5364X100 (ASPH) S-25 MIRL

RWY 17: Thld displcd 522'.

SERVICE: FUEL 100LL, JET A, A+ LGT Actvt MIRL Rwy 13-31, Rwy 17-35—CTAF.

AIRPORT REMARKS: Attended 1300-0100Z†. Nmrs birds invof arpt. For fuel call 830-221-4290; after hrs call 830-221-4100, 24 hr self service avbl with major credit card. High per mil acft oprg at Randolph AFB AUX (Seguin) Aifield. Hcls right tfc.

AIRPORT MANAGER: 830-221-4290

WEATHER DATA SOURCES: ASOS 119.325 (830) 629-7979.

COMMUNICATIONS: CTAF 127.05 ATIS 119.325 UNICOM 122.7

Ⓡ SAN ANTONIO APP CON 124.45

Ⓡ SAN ANTONIO DEP CON 128.05

TOWER 127.05 (1300-0100Z†) GND CON 120.175

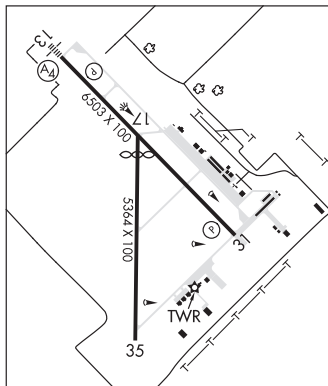
CLNC DEL 134.75 When BAZ twr clsd.

CLEARANCE DELIVERY PHONE: For CD when ATCT is clsd ctc sat Apch at 210-805-5516.

AIRSPACE: CLASS D svc 1300-0100Z†; other times CLASS G.

RADIO AIDS TO NAVIGATION: NOTAM FILE SAT.

SAN ANTONIO (H) (H) VORTACW 116.8 SAT Chan 115 N29°38.64' W98°27.68' 072° 22.2 NM to fld. 1159/8E.

**NEWMAN** N31°57.11' W106°16.35' NOTAM FILE ABQ.

EL PASO

(L) (L) VORTACW 112.4 EWM Chan 71 210° 8.2 NM to Biggs AAF (Fort Bliss). 4041/12E.

H-4L, L-6F

TACAN AZIMUTH & DME portion unusable:

220°-255° byd 25 NM blo 12,000'

NEWTON MUNI (61R) 3 NE UTC-6(-5DT) N30°53.04' W93°44.55'

HOUSTON

322 B NOTAM FILE CXO

L-19E, 21B

RWY 14-32: H4000X60 (ASPH) S-12.5 LIRL 0.9% up NW

RWY 14: Trees.

RWY 32: Trees.

AIRPORT REMARKS: Unattended. Rwy sfc rough. Some pot holes.

AIRPORT MANAGER: 409-379-5691

COMMUNICATIONS: CTAF/UNICOM 122.8

RCO 122.2 (MONTGOMERY COUNTY RADIO)

CLEARANCE DELIVERY PHONE: For CD ctc Polk Apch at 337-531-2352.

RADIO AIDS TO NAVIGATION: NOTAM FILE LFK.

LUFKIN (H) (H) VORTACW 112.1 LFK Chan 58 N31°09.75'

W94°43.01' 103° 52.9 NM to fld. 207/5E.

TACAN AZIMUTH & DME unusable:

260°-275° byd 30 NM

275°-260° byd 30 NM blo 2,500'

