

CONTINUED FROM PRECEDING PAGE

AIRSPACE: CLASS D.

RADIO AIDS TO NAVIGATION: NOTAM FILE AEX.

(H) (H) VORTACW 116.1 AEX Chan 108 N31°15.40' W92°30.06' 327° 4.9 NM to fld. 76/3E.

VOR unusable:

035°-065° blo 2,000'

066°-094° byd 35 NM blo 3,000'

185°-200° byd 35 NM blo 3,000'

201°-214° byd 35 NM blo 2,000'

215°-260° blo 2,000'

261°-285° byd 35 NM blo 2,000'

357°-034° byd 35 NM blo 3,000'

ILS 110.1 I-ERJ Rwy 14. Class IT.

ASR/PAR

COMM/NAV/WEATHER REMARKS: Multicom frequency 130.0 avbl.

ESLER RGNL (ESF)(KESF) P (ARNG) 10 NE UTC-6(-5DT) N31°23.69' W92°17.75'
112 B NOTAM FILE ESF

HOUSTON

H-6I, L-21B, 22E

IAP

RWY 09-27: H5999X150 (ASPH-GRVD) S-75, D-150, 2S-175,

2D-220 HIRL

RWY 09: REIL. VASI(V4L)—GA 3.0° TCH 53'. Trees.

RWY 27: MALSR.

RWY 14-32: H5601X150 (ASPH-GRVD) S-75, D-150, 2S-175,
2D-220 MIRL 0.4% up NW

RWY 14: REIL. PAPI(P4L)—GA 3.0° TCH 55'. Trees.

RWY 32: REIL. VASI(V4L)—GA 3.0° TCH 56'. Fence.

RUNWAY DECLARED DISTANCE INFORMATION

RWY 09: TORA-5999 TODA-5999 ASDA-5999 LDA-5999

RWY 14: TORA-5601 TODA-5601 ASDA-5601 LDA-5601

RWY 27: TORA-5999 TODA-5999 ASDA-5999 LDA-5999

RWY 32: TORA-5601 TODA-5601 ASDA-5601 LDA-5601

SERVICE: FUEL 100LL, JET A LGT Actvt MIRL Rwy 14-32; HIRL Rwy
09-27; REIL Rwsy 09, 14 and 32; MALSR Rwy 27, and twy lgts Twys

A, B, C, D and E—CTAF. **MILITARY— FUEL** A+ (avbl 1300-2300Z†
Tue-Fri; OT, C318-443-5566.) (NC-100LL)

AIRPORT REMARKS: Attended Tue-Fri 1300-2330Z†. Fuel avbl Tue-Fri
1300-2300Z† Sat-Mon on call in advance 318-443-5566. Birds on
and in/ov arpt seasonally. PAEW adjacent rwsy and twys. Rwy 14 and
Rwy 32 rwy markings severely faded.

AIRPORT MANAGER: 985-750-0485

WEATHER DATA SOURCES: ASOS 119.425 (318) 484-9031.

COMMUNICATIONS: CTAF/UNICOM 122.8

Ⓡ POLK APP/DEP CON 125.4

CLEARANCE DELIVERY PHONE: For CD etc Polk Apch at 337-531-2352.

RADIO AIDS TO NAVIGATION: NOTAM FILE AEX.

ALEXANDRIA (H) VORTACW 116.1 AEX Chan 108 N31°15.40' W92°30.06' 049° 13.4 NM to fld. 76/3E.

VOR unusable:

035°-065° blo 2,000'

066°-094° byd 35 NM blo 3,000'

185°-200° byd 35 NM blo 3,000'

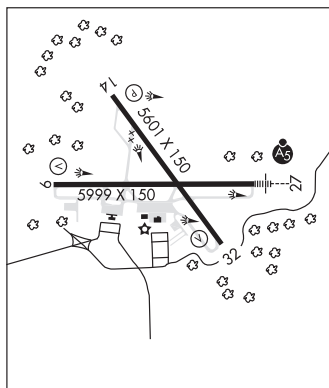
201°-214° byd 35 NM blo 2,000'

215°-260° blo 2,000'

261°-285° byd 35 NM blo 2,000'

357°-034° byd 35 NM blo 3,000'

ILS/DME 111.5 I-ESF Chan 52 Rwy 27. Class IA. ILS/DME unmonitored. DME unusable byd 25° right of course.

**ALLEN PARISH** (See OAKDALE on page 113)**ALVIN CALLENDER FLD** (See NEW ORLEANS NAS JRB (ALVIN CALLENDER FLD) on page 111)**ANGER** N30°36.38' W90°25.27' NOTAM FILE DRI.

NEW ORLEANS

NDB (LOMW) 212 HP 178° 5.1 NM to Hammond Northshore Rgnl. 94/0E.