

NASHVILLE INTL (BNA)(KBNA) P (ANG) 5 SE UTC-6(-5DT) N36°07.47' W86°40.69'

ATLANTA

599 B LRA Class I, ARFF Index C NOTAM FILE BNA

H-6K, 9A, L-16J

RWY 13-31: H11030X150 (CONC-GRVD) S-75, D-175, 2D-250,

IAP, AD

2D/2D2-875 PCN 70 R/C/W/T HIRL

RWY 13: REIL. Thld dspcld 800'. Trees. 0.7% up.

RWY 31: REIL. PAPI(P4R)—GA 3.0° TCH 51'. Thld dspcld 741'. Tree.

RWY 02C-20C: H8001X150 (CONC-GRVD) S-75, D-209, 2D-350

PCN 56 R/B/W/T HIRL

RWY 02C: MALSR. PAPI(P4L)—GA 3.0° TCH 64'. RVR-T 0.5% up.

RWY 20C: REIL. PAPI(P4L)—GA 3.0° TCH 68'. RVR-R 0.4% up.

RWY 02R-20L: H8001X150 (CONC-GRVD) S-75, D-209, 2D-350

PCN 59 R/B/W/T HIRL CL

RWY 02R: ALSF2. TDZL. RVR-TMR 0.7% down.

RWY 20L: MALSR. PAPI(P4L)—GA 3.0° TCH 50'. RVR-TMR 0.3% up.

RWY 02L-20R: H7704X150 (CONC-GRVD) S-100, D-200, 2D-390,

2D/2D2-850 PCN 70 R/B/W/T HIRL CL 0.6% up S

RWY 02L: ALSF2. TDZL. PAPI(P4R)—GA 3.0° TCH 55'. RVR-TR

RWY 20R: MALSF. PAPI(P4R)—GA 3.0° TCH 79'. RVR-TR

RUNWAY DECLARED DISTANCE INFORMATION

RWY 02C:TORA-8001 TODA-8001 ASDA-7601 LDA-7601

RWY 02L:TORA-7702 TODA-7702 ASDA-7702 LDA-7702

RWY 02R:TORA-8000 TODA-8000 ASDA-8000 LDA-8000

RWY 13: TORA-10288 TODA-11029 ASDA-10288 LDA-9487

RWY 20C:TORA-8001 TODA-8001 ASDA-8001 LDA-8001

RWY 20L:TORA-8000 TODA-8000 ASDA-8000 LDA-8000

RWY 20R:TORA-7702 TODA-7702 ASDA-7702 LDA-7702

RWY 31: TORA-10228 TODA-11029 ASDA-10228 LDA-9487

SERVICE: S4 FUEL 100LL, JET A OX2, 4 MILITARY—FUEL 100LL, A

NOISE: Tbjt rwy noise abatement proc; Mil tbjt use Rwy 13-31 for arr & dep. NOTE: See Special Notices—Nashville Intl Airport (BNA) Noise Abatement Procedures.

AIRPORT REMARKS: Attended continuously. Bird act on and in/ov arpt. Do not confuse Twy S for Rwy 20C. 180° turns for acft ovr 12500 lbs NA on asph fcs. Mil and acft more than 12500 lbs prac apch NA, prac apch btw 0500-1300Z± NA. Flt over main trml bldg NA. Rwy 13 Lgt'd jet blast fence 568' MSL 1167' NW thr. Rwy 31 lgt'd blast fence 598' MSL 1100' SE thr. Flight Notification Service (ADCUS) avbl. Readback and compliance of hldg instrn rqr, spcly Twy K and Rwy 20C apch, Twy L at Rwy 13, Twy H at Rwy 31. C concourse; inner bxl outbd tfc, outer bxl inbd tfc. ANG PPR—Music City ops 615-367-5579.

AIRPORT MANAGER: 615-275-1612

WEATHER DATA SOURCES: ASOS (615) 360-6133 LLWAS. TDWR.

COMMUNICATIONS: D-ATIS 135.1 UNICOM 122.95

TOWER 118.6 GND CON 121.9 CLNC DEL 126.05

Ⓡ APP CON 118.4 (East)

Ⓡ DEP CON 118.4 (East) 119.35 (West)

CDPLC (LOGON KUSA)

PDC

AIRSPACE: CLASS C svc ctc APP CON.

VOR TEST FACILITY (VOT) 108.6

RADIO AIDS TO NAVIGATION: NOTAM FILE BNA.

(H) (H) VORTACW 114.1 BNA Chan 88 N36°08.22' W86°41.09' at fld. 566/2W.

VORTAC unusable:

062°-069° blo 6,000'

ILS 110.75 I-EZN Rwy 02C. Class IE.

ILS/DME 109.9 I-BNA Chan 36 Rwy 02L. Class IIIE.

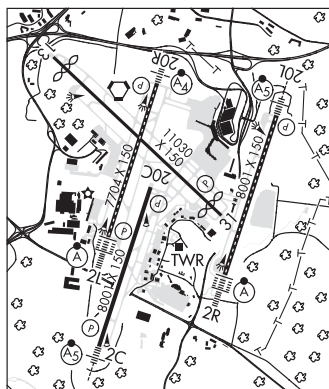
ILS/DME 111.75 I-UQU Chan 54(Y) Rwy 02R. Class IIIE. LOC unusable byd 20° right of course.

ILS/DME 109.35 I-SSX Chan 30(Y) Rwy 20L. Class 1E.

ILS 111.3 I-VIY Rwy 20R. Class IB. LOC unusable byd 25° left and right of course.

ILS 111.95 I-PNO Rwy 31. Class IB.

COMM/NAV/WEATHER REMARKS: Trml ramp unctld; mnt adzys—122.95



NEW TAZEWELL MUNI (See TAZEWELL on page 431)

OBION N36°17.86' W88°59.69' NOTAM FILE MKL.

ST LOUIS

NDB (MHW/LOM) 212 UC 005° 4.9 NM to Everett-Stewart Rgnl. 310/OE. NDB unmonitored.

L-16H