

MONTROSE RGNL (MTJ)(KMTJ) 1 NW UTC-7(-6DT) N38°30.59' W107°53.66'

DENVER

5759 B Class I, ARFF Index B NOTAM FILE MTJ

H-3E, L-9E

RWY 17-35: H10000X150 (ASPH-GRVD) S-75, D-190, 2D-265

IAP, AD

PCN 61 F/C/X/T HIRL

RWY 17: MALSR. PAPI(P4L)—GA 3.0° TCH 55'. 0.5% up.**RWY 35:** REIL. PAPI(P4L)—GA 3.0° TCH 41'. 0.3% down.**RWY 13-31:** H7510X100 (ASPH-GRVD) S-65, D-90, 2D-150

PCN 13 F/D/X/T HIRL 0.8 % up SE

RWY 13: VASI(V4L)—GA 3.0° TCH 43'. Tree.**RWY 31:** REIL. VASI(V4L)—GA 3.0° TCH 43'.**RUNWAY DECLARED DISTANCE INFORMATION****RWY 13:** TORA-7510 TODA-7510 ASDA-7510 LDA-7510**RWY 17:** TORA-10000 TODA-10000 ASDA-10000 LDA-10000**RWY 31:** TORA-7510 TODA-7510 ASDA-7510 LDA-7510**RWY 35:** TORA-10000 TODA-10000 ASDA-10000 LDA-10000**SERVICE:** S4 FUEL 100LL, JET A+ OX 1, 3 LGT ACTVT MALSR Rwy

17; REIL Rwy 31 and 35; HIRL Rwy 13-31 and 17-35—CTAF.

AIRPORT REMARKS: Attended Apr 1-Dec 15 1230-0400Z†, Dec 16-Mar 31 1200-0400Z†. Birds and wildlife on and invof arpt. Unsked acr ops more than 30 pax seats 24 hr PPR—amgr. Acr aces trml ramp via Twy C; oudb tfc Twy D. Ramp cnctr adj to T hngr row clsd indef; Twy E and E6 clsd exc wingspan less than 78 ft. Twy B ltd to snl wheel max 80,000 lb; dbl wheel max 105,000 lb; dbl tand wheel max 170,000 lb. Rwy 13-31 rcmd for apch spd less than 121 kt. Rwy 13 preferred lndg rwy. Rwy 31 preferred tkof rwy. Rwy 17-35 rcmd for apch spd more than 121 kt. Rwy 17 preferred lndg rwy. Rwy 35 preferred tkof rwy.

AIRPORT MANAGER: 970-249-3433**WEATHER DATA SOURCES:** ASOS 135.225 (970) 249-1534.**COMMUNICATIONS:** CTAF/UNICOM 122.8

RCO 122.65 (DENVER RADIO)

① DENVER CENTER APP/DEP CON 127.1

CLEARANCE DELIVERY PHONE: For CD if una to ctc on FSS freq, ctc Denver ARTCC at 303-651-4257.**AIRSPACE:** CLASS E svc 1300-0400Z†; other times CLASS G.**RADIO AIDS TO NAVIGATION:** NOTAM FILE MTJ.

(H) (H) VOR/DME 117.1 MTJ Chan 118 N38°30.39' W107°53.96' at fld. 5713/12E. vDME unmonitored.

DME unusable:

011°-090° byd 26NM blo 15,000'

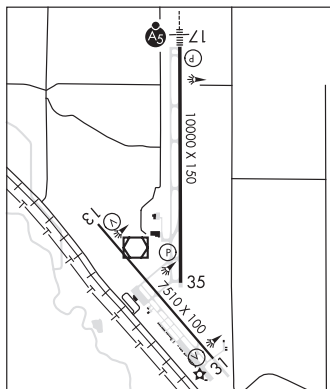
190°-250° byd 25 NM blo 15,000'

VOR unusable:

060°-090° byd 26NM blo 16,000'

190°-250° byd 25 NM blo 15,000'

ILS 111.3 I-MTJ Rwy 17. Unmonitored.

**MONUMENT HILL** MNH N39°13.13' W104°38.43'/7060

DENVER

AWOS-3 134.375 (303) 648-3479

L-10F

NORTH FORK VALLEY (See PAONIA on page 304)**NORTHERN COLORADO RGNL** (See FORT COLLINS/LOVELAND on page 289)