

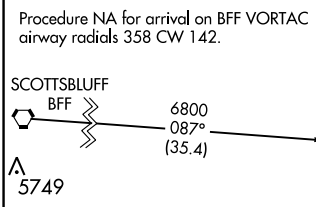
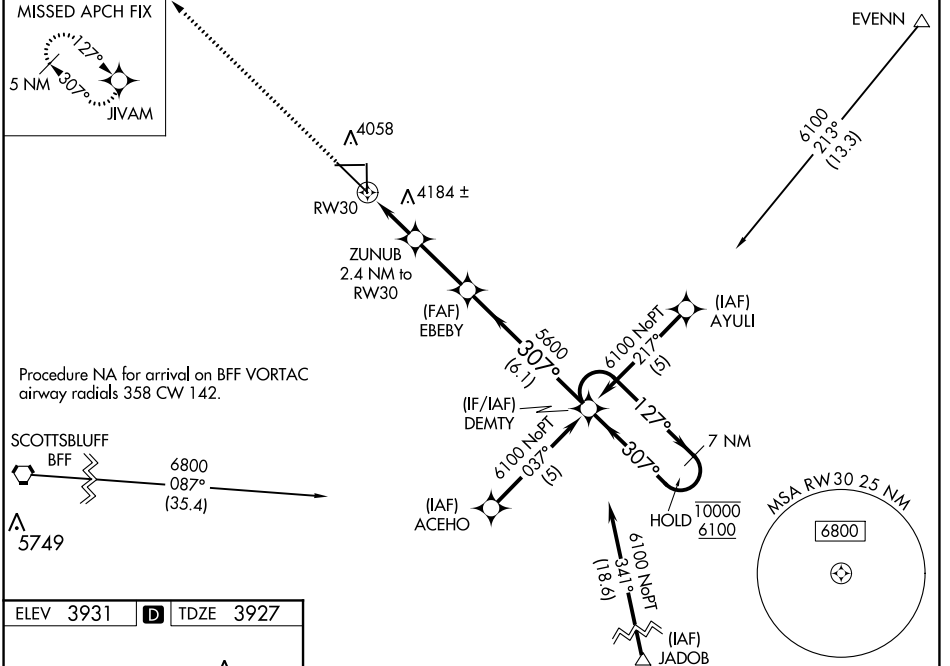
WAAS CH <b>82102</b> <b>W30A</b>	APP CRS <b>307°</b>	Rwy Idg <b>9202</b> TDZE <b>3927</b> Apt Elev <b>3931</b>
--	------------------------	--

# RNAV (GPS) RWY 30

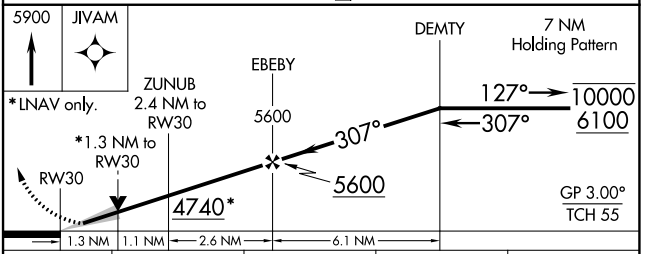
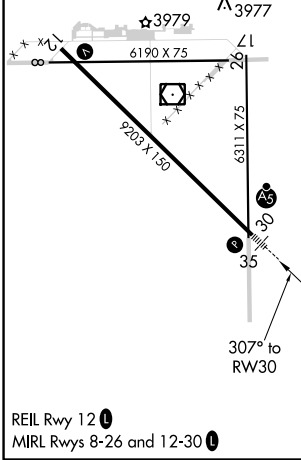
ALLIANCE MUNI (AIA)

RNP APCH.	MALSR 	MISSED APPROACH: Climb to 5900 direct JIVAM and hold.
<p><b>⚠</b> For uncompensated Baro-VNAV systems, LNAV/VNAV NA below -22°C or above 50°C. For inop ALS, increase LNAV/VNAV visibility all Cats to ½ SM and LNAV Cats C/D visibility to 1 ½ SM.</p>		

ASOS <b>135.075</b>	DENVER CENTER <b>127.95 338.2</b>	UNICOM <b>123.0 (CTAF) 0</b>
------------------------	--------------------------------------	---------------------------------



ELEV 3931	<b>D</b>	TDZE 3927
-----------	----------	-----------



CATEGORY	A	B	C	D
LPV DA		4127-½	200 (200-½)	
LNAV/VNAV DA		4221-½	294 (300-½)	
LNAV MDA	4400-½	473 (500-½)	4400-1	473 (500-1)
CIRCLING	4460-1	4520-1	4580-1¾	4640-2¼
	529 (600-1)	589 (600-1)	649 (700-1¾)	709 (800-2¼)

NC-2, 19 MAY 2022 to 16 JUN 2022

NC-2, 19 MAY 2022 to 16 JUN 2022