

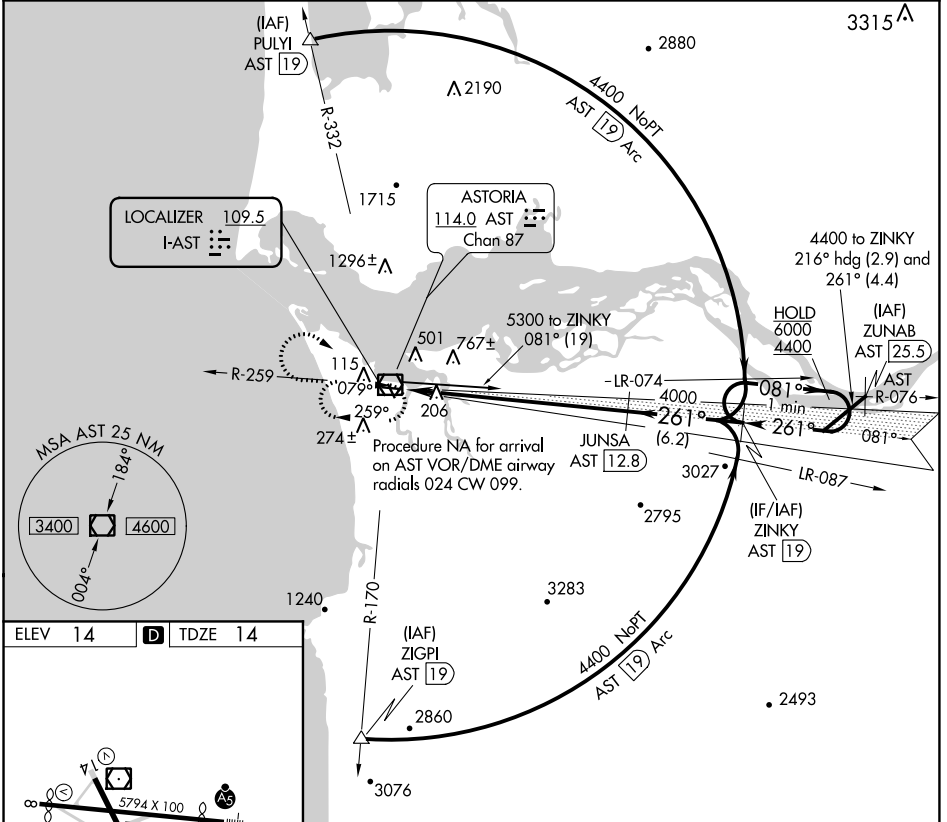
LOC I-AST <b>109.5</b>	APP CRS <b>261°</b>	Rwy Idg TDZE Apt Elev	<b>4780</b> <b>14</b> <b>14</b>
---------------------------	------------------------	-----------------------------	---------------------------------------

# ILS RWY 26

ASTORIA RGNL (AST)

DME required for procedure entry.		MALSRL 	MISSED APPROACH: Climb to 1500 then climbing right turn to 2900 direct AST VOR/DME and hold.
Rwy 26 helicopter visibility reduction below 3/4 SM NA. Inoperative table does not apply.			

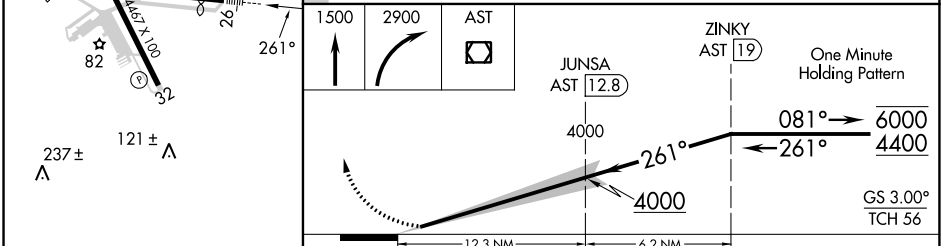
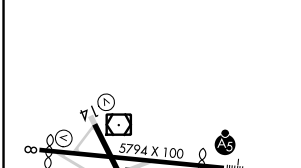
ASOS <b>135.375</b>	SEATTLE CENTER <b>124.2 317.6</b>	UNICOM <b>122.8 (CTAF) 0</b>
------------------------	--------------------------------------	---------------------------------



NW-1, 19 MAY 2022 to 16 JUN 2022

NW-1, 19 MAY 2022 to 16 JUN 2022

ELEV 14	<b>D</b>	TDZE 14
---------	----------	---------



REIL Rwy 8	REIL Rwy 14	MIRL Rwy 8-26 and 14-32		
CATEGORY	A	B	C	D
S-ILS 26	264-1 250 (300-1)			